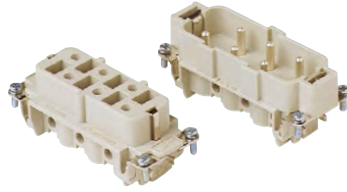


CP - CP...RY 6 poles + ⊕ 35A - 400/690V

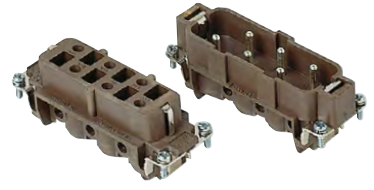
enclosures: size "77.27"	page:
C-TYPE IP65/IP66	402 - 411
C7 IP67, two levers	439 - 440
V-TYPE IP65/IP66, single lever	454 - 458
BIG hoods	470 - 471
T-TYPE IP65 insulating	484 - 485
T-TYPE / W IP66/IP69 insulating	491
HYGIENIC T-TYPE / H IP66/IP69	503
HYGIENIC T-TYPE / C IP66/IP69, -50 °C	508
W-TYPE for aggressive environments	523
E-Xtreme® corrosion proof	534 - 535, 544, 554 - 555
EMC	580
Central lever	609 - 611
LS-TYPE	622 - 623
IP68	640 - 643
panel supports:	page:
COB	652 - 653

inserts, screw terminal connection



Q SILVER PLATED CONTACTS

inserts, screw terminal connection



Q SILVER PLATED CONTACTS

description	part No.	part No.
-------------	----------	----------

indirect, with plate
female inserts with female contacts
male inserts with male contacts

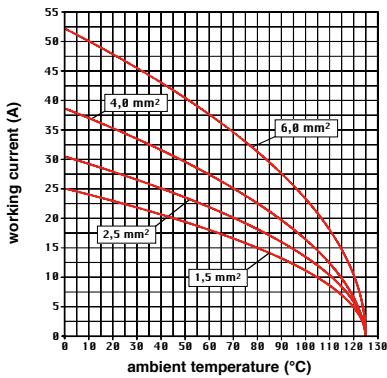
CPF 06
CPM 06

indirect, with plate, use in temperatures up to 180 °C
female inserts with female contacts, brown
male inserts with male contacts, brown

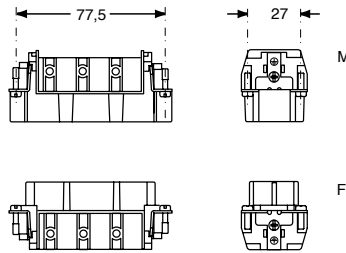
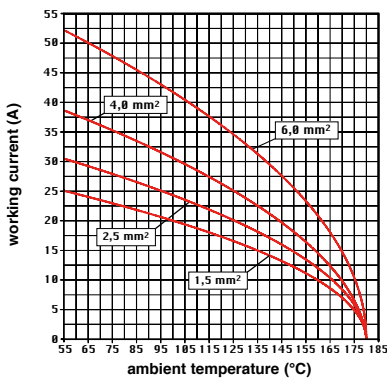
CPF 06 RY
CPM 06 RY

- characteristics according to EN 61984:
35A 400/690V 6kV 3
- certified
- rated voltage according to UL/CSA: 600V
- insulation resistance: ≥ 10 GΩ
- ambient temperature limit: -40 °C ... +125 °C (CP RY version up to 180 °C)
- made of self-extinguishing thermoplastic resin UL 94V-0
- mechanical life: ≥ 500 cycles
- contact resistance: ≤ 0,5 mΩ
- for max. current load see the connector inserts derating diagrams below; for more information see page 28

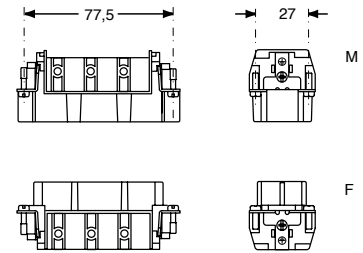
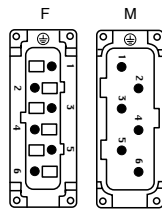
CP 06 poles connector inserts
Maximum current load derating diagram



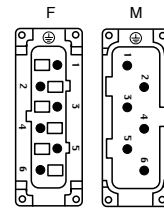
CP...RY 06 poles connector inserts
Maximum current load derating diagram



contacts side (front view)



contacts side (front view)



- inserts with plate, for section conductors: 0,75 - 6 mm² - AWG 18 - 10
- conductors stripping length: 10,5 mm
- terminal screw torque: 1,2 Nm (10,7 lb.in), information see page 20 and 21

- inserts with plate, for section conductors: 0,75 - 6 mm² - AWG 18 - 10
- conductors stripping length: 10,5 mm
- terminal screw torque: 1,2 Nm (10,7 lb.in), information see page 20 and 21

CP - CP...RY