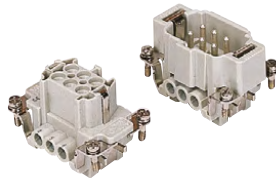


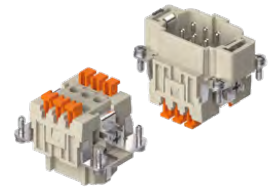
CNE CSH-SQUICH® 6 poles + ⊕ 16A - 500V

enclosures: size "44.27"	page:
C-TYPE IP65/IP66	387 - 392
C7 IP67, single lever	436 - 437
V-TYPE IP65/IP66, single lever	444 - 447
BIG hoods	466 - 467
T-TYPE IP65 insulating	480 - 481
T-TYPE / W IP66/IP69 insulating	489
HYGIENIC T-TYPE / H IP66/IP69	501
HYGIENIC T-TYPE / C IP66/IP69, -50 °C	506
W-TYPE for aggressive environments	521
E-Xtreme® corrosion proof	530 - 531, 542, 550 - 551
EMC	578
Central lever	603 - 605
LS-TYPE	618 - 619
IP68	632 - 635
panel supports:	page:
COB	652 - 653

inserts, screw terminal connections



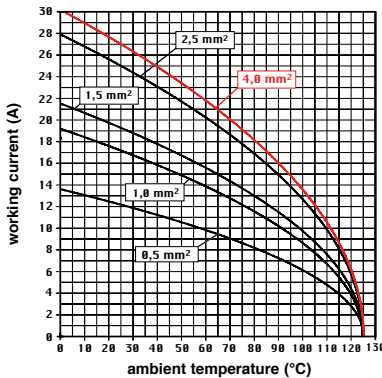
inserts, spring terminal connections without tools



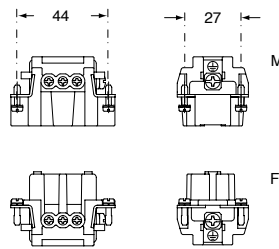
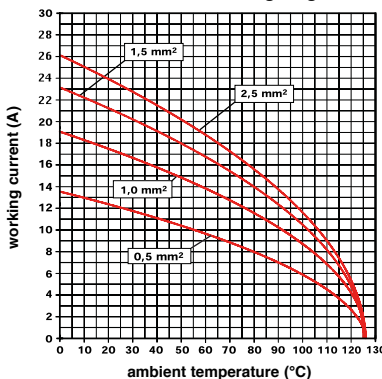
description	part No.	part No.
indirect, with plate ¹⁾ female inserts with female contacts male inserts with male contacts	CNEF 06 T CNEM 06 T	
direct, without plate ²⁾ female inserts with female contacts male inserts with male contacts	CNEF 06 TX CNEM 06 TX	
spring terminals with actuator button female inserts with female contacts male inserts with male contacts		CSHF 06 CSHM 06

- characteristics according to EN 61984:
16A 500V 6kV 3
16A 400/690V 6kV 2
- cULus (UL for USA and Canada),
- certified
- rated voltage according to UL/CSA: 600V
- insulation resistance: ≥ 10 GΩ
- ambient temperature limit: -40 °C ... +125 °C
- made of self-extinguishing thermoplastic resin UL 94V-0
- mechanical life: ≥ 500 cycles
- contact resistance: ≤ 1 mΩ (CNE) - ≤ 3 mΩ (CSH)
- for max. current load see the connector inserts derating diagrams below; for more information see page 28

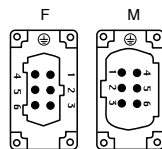
CNE 06 poles connector inserts
Maximum current load derating diagram



CSH 06 poles connector inserts
Maximum current load derating diagram



contacts side (front view)

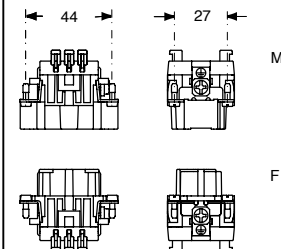


- inserts with plate for section conductors:
0,5 - 4 mm² - AWG 20 - 12
- inserts without plate for section conductors:
0,25 - 2,5 mm² - AWG 24 - 14
- conductors stripping length: 7 mm
- terminal screw torque: 0,5 Nm (4.4 lb.in), for more information see page 20 and 21

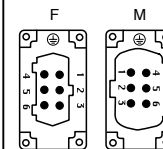
¹⁾ for unprepared conductors



²⁾ for conductors with end sleeve ferrule

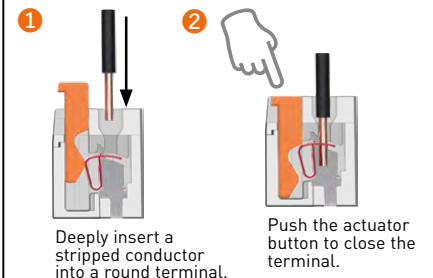


contacts side (front view)

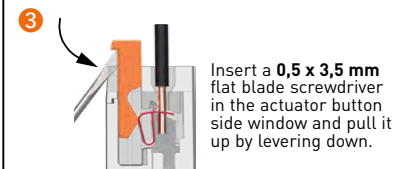


- inserts for connectors with the following sections:
0,14 - 2,5 mm² - AWG 26 - 14
- conductors stripping length: 9...11 mm

SQUICH®-spring connection technology WIRING



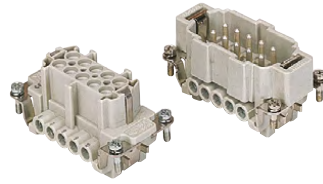
RE-OPENING



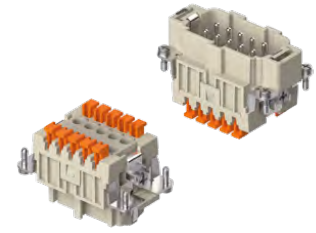
CNE CSH-SQUICH® 10 poles + ⊕ 16A - 500V

enclosures: size "57.27"	page:
C-TYPE IP65/IP66	393 - 401
C7 IP67, two levers	438
V-TYPE IP65/IP66, single lever	448 - 453
BIG hoods	468 - 469
T-TYPE IP65 insulating	482 - 483
T-TYPE / W IP66/IP69 insulating	490
HYGIENIC T-TYPE / H IP66/IP69	502
HYGIENIC T-TYPE / C IP66/IP69, -50 °C	507
W-TYPE for aggressive environments	522
E-Xtreme® corrosion proof	532 - 533, 543, 552 - 553
EMC	579
Central lever	606 - 608
LS-TYPE	620 - 621
IP68	636 - 639
panel supports: COB	page: 652 - 653

**inserts,
screw terminal connections**



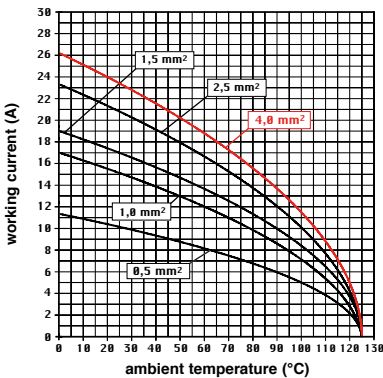
**inserts,
spring terminal connections without tools**



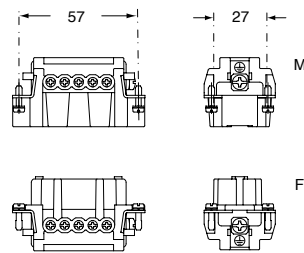
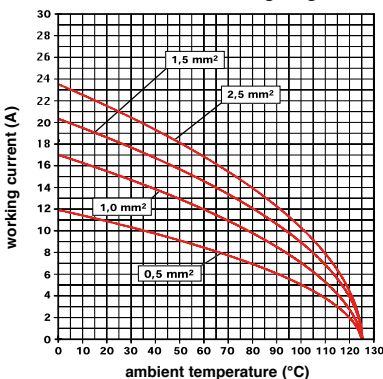
description	part No.	part No.
indirect, with plate ¹⁾ female inserts with female contacts male inserts with male contacts	CNEF 10 T CNEM 10 T	
direct, without plate ²⁾ female inserts with female contacts male inserts with male contacts	CNEF 10 TX CNEM 10 TX	
spring terminals with actuator button female inserts with female contacts male inserts with male contacts		CSHF 10 CSHM 10

- characteristics according to EN 61984:
16A 500V 6kV 3
16A 400/690V 6kV 2
- (UL for USA and Canada),
- certified
- rated voltage according to UL/CSA: 600V
- insulation resistance: ≥ 10 G Ω
- ambient temperature limit: -40 °C ... +125 °C
- made of self-extinguishing thermoplastic resin UL 94V-0
- mechanical life: ≥ 500 cycles
- contact resistance: ≤ 1 m Ω (CNE) - ≤ 3 m Ω (CSH)
- for max. current load see the connector inserts derating diagrams below; for more information see page 28

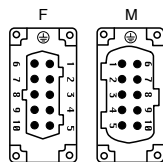
CNE 10 poles connector inserts
Maximum current load derating diagram



CSH 10 poles connector inserts
Maximum current load derating diagram



contacts side (front view)

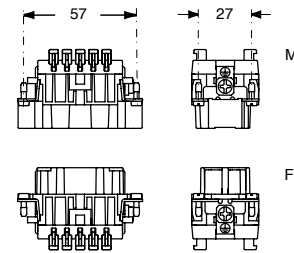


- inserts with plate for section conductors:
0,5 - 4 mm² - AWG 20 - 12
- inserts without plate for section conductors:
0,25 - 2,5 mm² - AWG 24 - 14
- conductors stripping length: 7 mm
- terminal screw torque: 0,5 Nm (4.4 lb.in), for more information see page 20 and 21

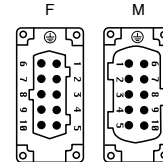
¹⁾ for unprepared conductors



²⁾ for conductors with end sleeve ferrule

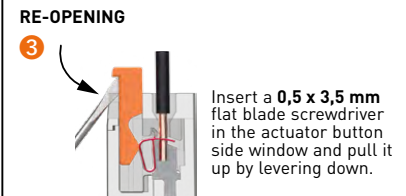
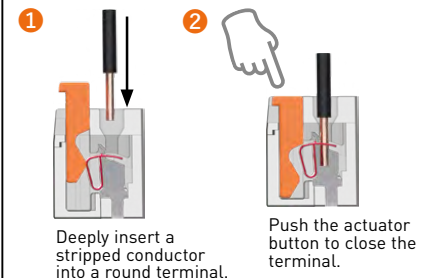


contacts side (front view)



- inserts for connectors with the following sections:
0,14 - 2,5 mm² - AWG 26 - 14
- conductors stripping length: 9...11 mm

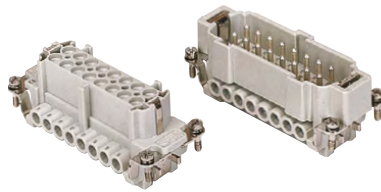
SQUICH®-spring connection technology
WIRING



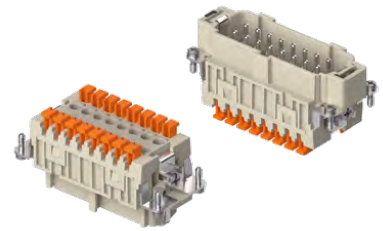
CNE CSH-SQUICH® 16 poles + ⚡ 16A - 500V

enclosures: size "77.27"	page:
C-TYPE IP65/IP66	402 - 411
C7 IP67, two levers	439 - 440
V-TYPE IP65/IP66, single lever	454 - 458
BIG hoods	470 - 471
T-TYPE IP65 insulating	484 - 485
T-TYPE / W IP66/IP69 insulating	491
HYGIENIC T-TYPE / H IP66/IP69	503
HYGIENIC T-TYPE / C IP66/IP69, -50 °C	508
W-TYPE for aggressive environments	523
E-Xtreme® corrosion proof	534 - 535, 544, 554 - 555
EMC	580
Central lever	609 - 611
LS-TYPE	622 - 623
IP68	640 - 643
panel supports:	page:
COB	652 - 653

inserts,
screw terminal connections



inserts,
spring terminal connections without tools



description	part No.	part No.
-------------	----------	----------

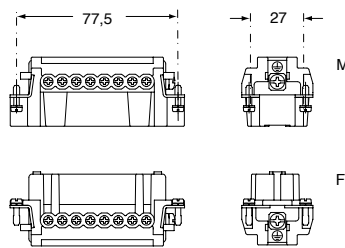
indirect, with plate ¹⁾
 female inserts with female contacts **CNEF 16 T**
 male inserts with male contacts **CNEM 16 T**

direct, without plate ²⁾
 female inserts with female contacts **CNEF 16 TX**
 male inserts with male contacts **CNEM 16 TX**

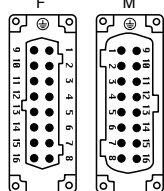
spring terminals with actuator button
 female inserts with female contacts
 male inserts with male contacts

CSHF 16
CSHM 16

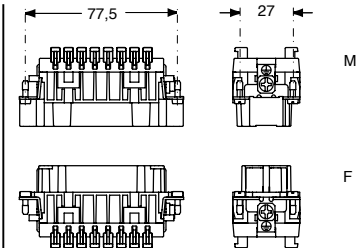
- characteristics according to EN 61984:
16A 500V 6kV 3
16A 400/690V 6kV 2
- (UL for USA and Canada), certified
- rated voltage according to UL/CSA: 600V
- insulation resistance: ≥ 10 GΩ
- ambient temperature limit: -40 °C ... +125 °C
- made of self-extinguishing thermoplastic resin UL 94V-0
- mechanical life: ≥ 500 cycles
- contact resistance: ≤ 1 mΩ (CNE) - ≤ 3 mΩ (CSH)
- for max. current load see the connector inserts derating diagrams below; for more information see page 28



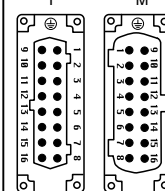
contacts side (front view)



- inserts with plate for section conductors:
 0,5 - 4 mm² - AWG 20 - 12
- inserts without plate for section conductors:
 0,25 - 2,5 mm² - AWG 24 - 14
- conductors stripping length: 7 mm
- terminal screw torque: 0,5 Nm (4.4 lb.in), for more information see page 20 and 21

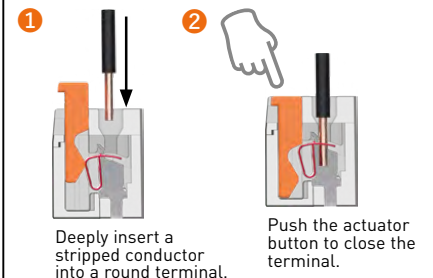


contacts side (front view)

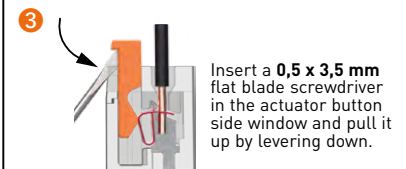


- inserts for connectors with the following sections:
 0,14 - 2,5 mm² - AWG 26 - 14
- conductors stripping length: 9...11 mm

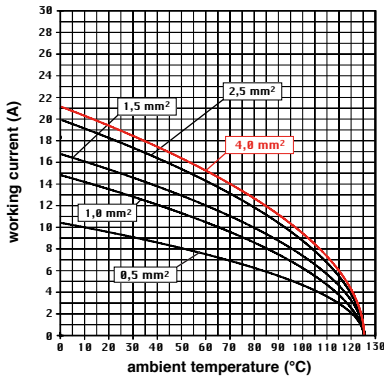
SQUICH®-spring connection technology
WIRING



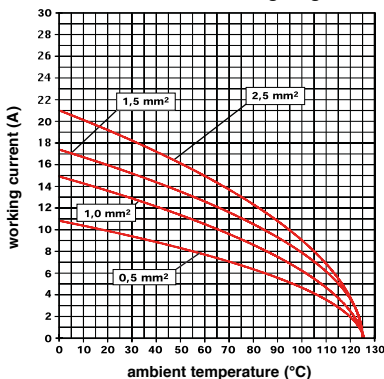
RE-OPENING



CNE 16 poles connector inserts
Maximum current load derating diagram



CSH 16 poles connector inserts
Maximum current load derating diagram



¹⁾ for unprepared conductors



²⁾ for conductors with end sleeve ferrule

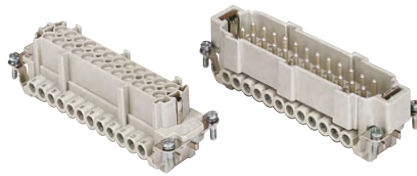


CNE CSH-SQUICH®

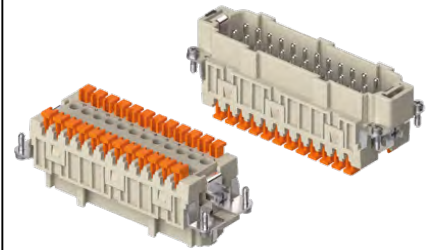
CNE CSH-SQUICH® 24 poles + ⊕ 16A - 500V

enclosures:	
size "104.27"	page:
C-TYPE IP65/IP66	412 - 423
C7 IP67, two levers	441 - 442
V-TYPE IP65/IP66, single lever	459 - 463
BIG hoods	472 - 473
T-TYPE IP65 insulating	486 - 487
T-TYPE / W IP66/IP69 insulating	492
HYGIENIC T-TYPE / H IP66/IP69	504
HYGIENIC T-TYPE / C IP66/IP69, -50 °C	509
W-TYPE for aggressive environments	524
E-Xtreme® corrosion proof	536 - 537, 545, 556 - 557
EMC	581
Central lever	612 - 614
LS-TYPE	624 - 625
IP68	644 - 647
panel supports:	page:
COB	652 - 653

**inserts,
screw terminal connections**



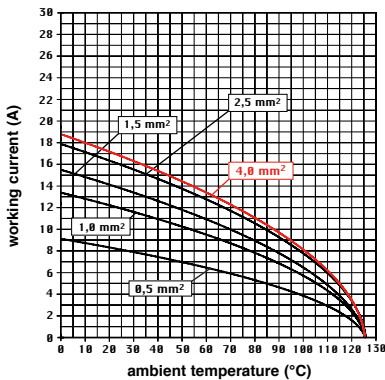
**inserts,
spring terminal connections without tools**



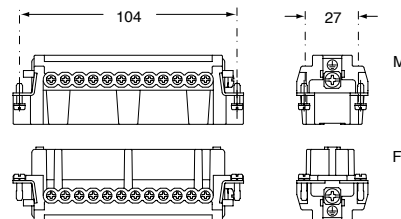
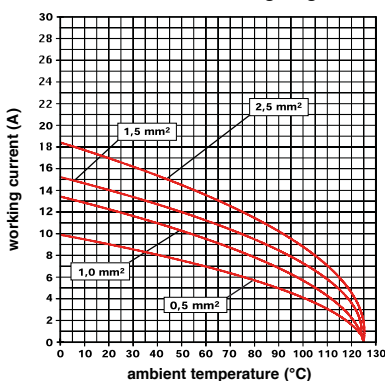
description	part No.	part No.
indirect, with plate ¹⁾ female inserts with female contacts male inserts with male contacts	CNEF 24 T CNEM 24 T	
direct, without plate ²⁾ female inserts with female contacts male inserts with male contacts	CNEF 24 TX CNEM 24 TX	
spring terminals with actuator button female inserts with female contacts male inserts with male contacts		CSHF 24 CSHM 24

- characteristics according to EN 61984:
16A 500V 6kV 3
16A 400/690V 6kV 2
- (UL for USA and Canada),
- certified
- rated voltage according to UL/CSA: 600V
- insulation resistance: ≥ 10 GΩ
- ambient temperature limit: -40 °C ... +125 °C
- made of self-extinguishing thermoplastic resin UL 94V-0
- mechanical life: ≥ 500 cycles
- contact resistance: ≤ 1 mΩ (CNE) - ≤ 3 mΩ (CSH)
- for max. current load see the connector inserts derating diagrams below; for more information see page 28

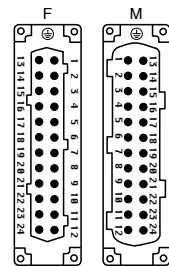
**CNE 24 poles connector inserts
Maximum current load derating diagram**



**CSH 24 poles connector inserts
Maximum current load derating diagram**



contacts side (front view)

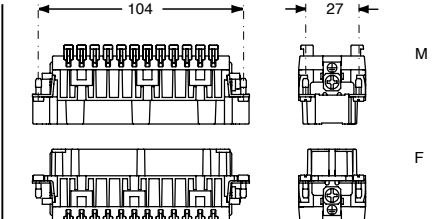


- inserts with plate for section conductors: 0,5 - 4 mm² - AWG 20 - 12
- inserts without plate for section conductors: 0,25 - 2,5 mm² - AWG 24 - 14
- conductors stripping length: 7 mm
- terminal screw torque: 0,5 Nm (4.4 lb.in), for more information see page 20 and 21

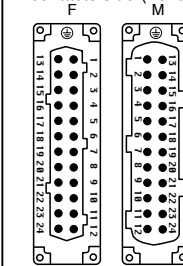
¹⁾ for unprepared conductors



²⁾ for conductors with end sleeve ferrule



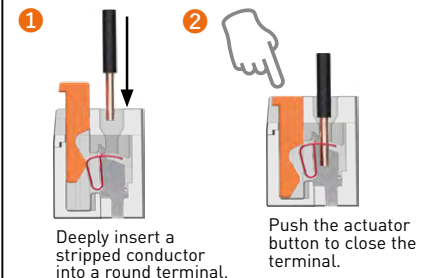
contacts side (front view)



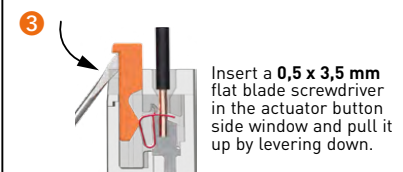
- inserts for connectors with the following sections: 0,14 - 2,5 mm² - AWG 26 - 14
- conductors stripping length: 9...11 mm

SQUICH®-spring connection technology

WIRING



RE-OPENING



CNE CSH-SQUICH® 32 poles + ⊕ 16A - 500V

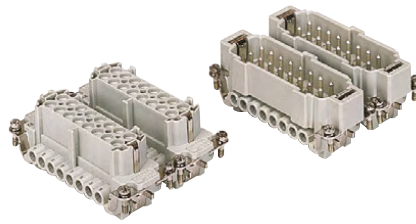
enclosures:
size "77.62"

page:

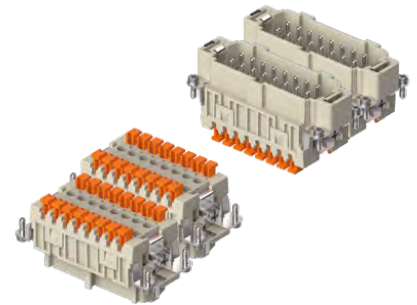
C-TYPE IP65/IP66
W-TYPE for aggressive environments
E-Xtreme® corrosion proof

424 - 429
525
546

inserts,
screw terminal connections



inserts,
spring terminal connections without tools



description

part No.

part No.

part No.

part No

indirect, with plate ¹⁾
female inserts, No. (1-16) and (17-32)
male inserts, No. (1-16) and (17-32)

CNEF 16 T
CNEM 16 T

CNEF 16 TN
CNEM 16 TN

direct, without plate ²⁾
female inserts, No. (1-16) and (17-32)
male inserts, No. (1-16) and (17-32)

CNEF 16 TX
CNEM 16 TX

CNEF 16 TXN
CNEM 16 TXN

spring terminals with actuator button
female inserts with female contacts, No. (1-16) and (17-32)
male inserts with male contacts, No. (1-16) and (17-32)

CSHF 16
CSHM 16

CSHF 16 N
CSHM 16 N

- characteristics according to EN 61984:

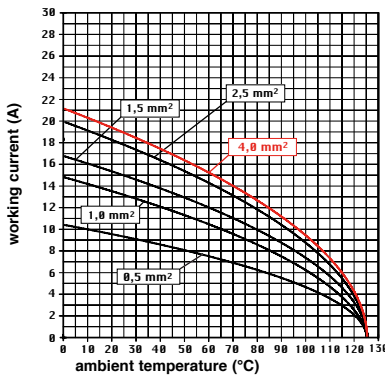
16A 500V 6kV 3
16A 400/690V 6kV 2

- cULus (UL for USA and Canada),

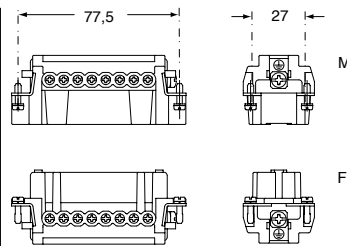
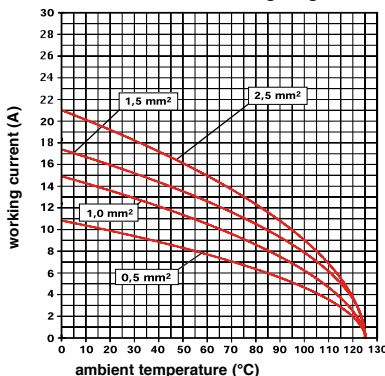
certified

- rated voltage according to UL/CSA: 600V
- insulation resistance: $\geq 10 \text{ G}\Omega$
- ambient temperature limit: $-40 \text{ }^\circ\text{C} \dots +125 \text{ }^\circ\text{C}$
- made of self-extinguishing thermoplastic resin UL 94V-0
- mechanical life: ≥ 500 cycles
- contact resistance: $\leq 1 \text{ m}\Omega$ (CNE) - $\leq 3 \text{ m}\Omega$ (CSH)
- for max. current load see the connector inserts derating diagrams below; for more information see page 28

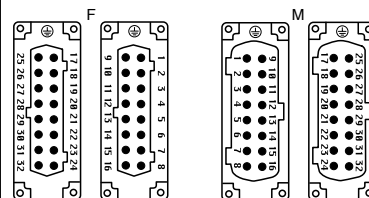
CNE 32 poles connector inserts
Maximum current load derating diagram



CSH 32 poles connector inserts
Maximum current load derating diagram



contacts side (front view)

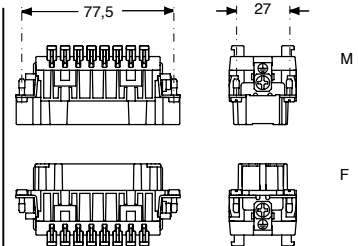


- inserts with plate for section conductors:
0,5 - 4 mm² - AWG 20 - 12
- inserts without plate for section conductors:
0,25 - 2,5 mm² - AWG 24 - 14
- conductors stripping length: 7 mm
- terminal screw torque: 0,5 Nm (4.4 lb.in), for more information see page 20 and 21

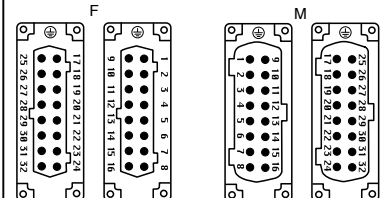
¹⁾ for unprepared conductors



²⁾ for conductors with end sleeve ferrule

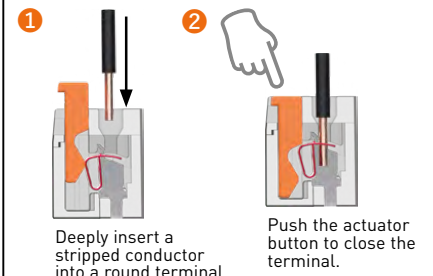


contacts side (front view)

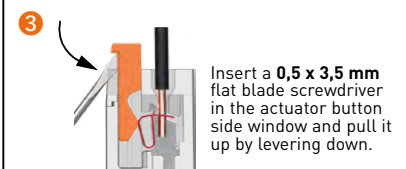


- inserts for connectors with the following sections:
0,14 - 2,5 mm² - AWG 26 - 14
- conductors stripping length: 9...11 mm

SQUICH®-spring connection technology
WIRING



RE-OPENING



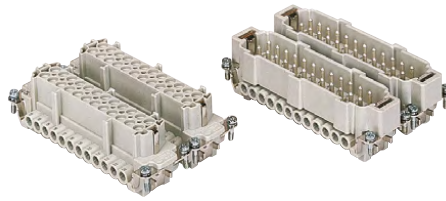
CNE CSH-SQUICH® 48 poles + ⊕ 16A - 500V

enclosures:
size "104.62"

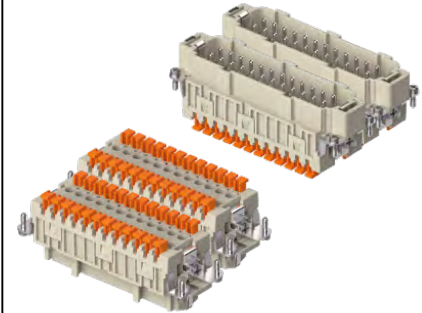
page:

C-TYPE IP65/IP66	430
W-TYPE for aggressive environments	526
E-Xtreme® corrosion proof	547

inserts,
screw terminal connections



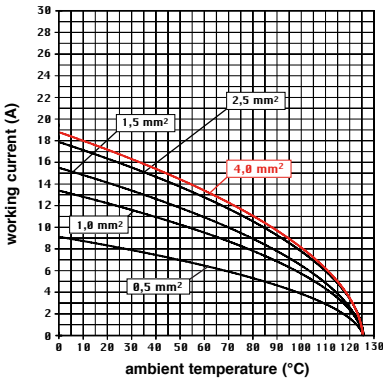
inserts,
spring terminal connections without tools



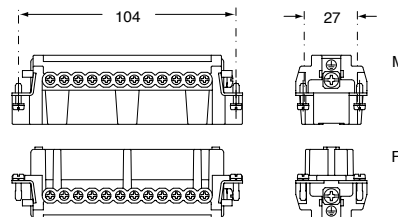
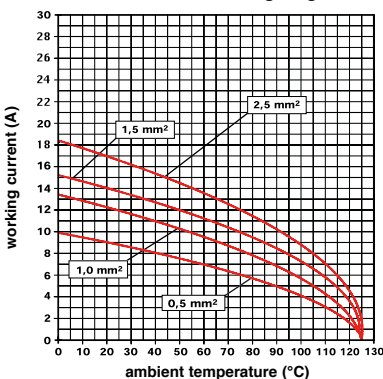
description	part No.	part No.	part No.	part No.
indirect, with plate ¹⁾ female inserts, No. (1-24) and (25-48) male inserts, No. (1-24) and (25-48)	CNEF 24 T CNEM 24 T	CNEF 24 TN CNEM 24 TN		
direct, without plate ²⁾ female inserts, No. (1-24) and (25-48) male inserts, No. (1-24) and (25-48)	CNEF 24 TX CNEM 24 TX	CNEF 24 TXN CNEM 24 TXN	CSHF 24 CSHM 24	CSHF 24 N CSHM 24 N
spring terminals with actuator button female inserts with female contacts, No. (1-24) and (25-48) male inserts with male contacts, No. (1-24) and (25-48)				

- characteristics according to EN 61984:
16A 500V 6kV 3
16A 400/690V 6kV 2
- (UL for USA and Canada),
- certified
- rated voltage according to UL/CSA: 600V
- insulation resistance: $\geq 10 \text{ G}\Omega$
- ambient temperature limit: $-40 \text{ }^\circ\text{C} \dots +125 \text{ }^\circ\text{C}$
- made of self-extinguishing thermoplastic resin UL 94V-0
- mechanical life: ≥ 500 cycles
- contact resistance: $\leq 1 \text{ m}\Omega$ (CNE) - $\leq 3 \text{ m}\Omega$ (CSH)
- for max. current load see the connector inserts derating diagrams below; for more information see page 28

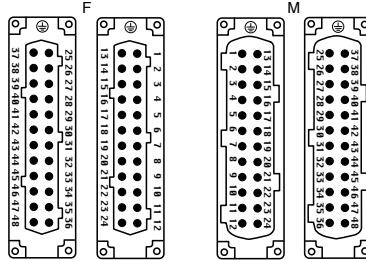
CNE 48 poles connector inserts
Maximum current load derating diagram



CSH 48 poles connector inserts
Maximum current load derating diagram



contacts side (front view)



- inserts with plate for section conductors: 0,5 - 4 mm² - AWG 20 - 12
- inserts without plate for section conductors: 0,25 - 2,5 mm² - AWG 24 - 14
- conductors stripping length: 7 mm
- terminal screw torque: 0,5 Nm (4.4 lb.in), for more information see page 20 and 21

¹⁾ for unprepared conductors

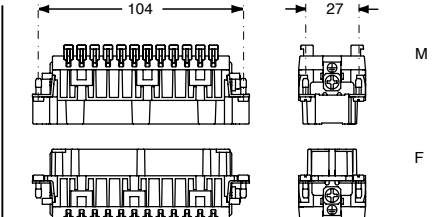


CNE ...

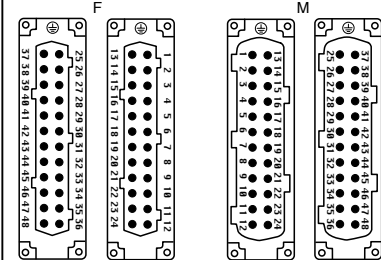
²⁾ for conductors with end sleeve ferrule



CNE ... X



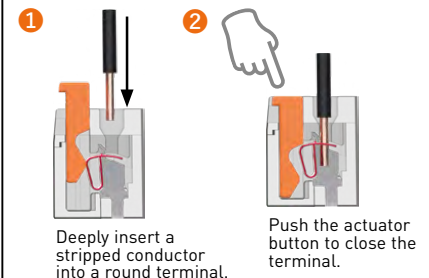
contacts side (front view)



- inserts for connectors with the following sections: 0,14 - 2,5 mm² - AWG 26 - 14
- conductors stripping length: 9...11 mm

SQUICH®-spring connection technology

WIRING



RE-OPENING

