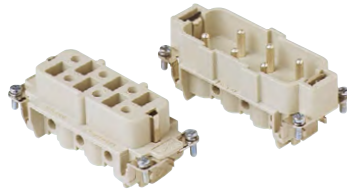


**CP - CP...RY 6 poles + ⊕ 35A - 400/690V**

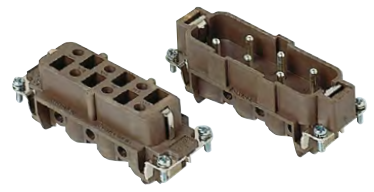
enclosures: size "77.27"	page:
C-TYPE IP65/IP66	402 - 411
C7 IP67, two levers	439 - 440
V-TYPE IP65/IP66, single lever	454 - 458
BIG hoods	470 - 471
T-TYPE IP65 insulating	484 - 485
T-TYPE / W IP66/IP69 insulating	491
HYGIENIC T-TYPE / H IP66/IP69	503
HYGIENIC T-TYPE / C IP66/IP69, -50 °C	508
W-TYPE for aggressive environments	523
E-Xtreme® corrosion proof	534 - 535, 544, 554 - 555
EMC	580
Central lever	609 - 611
LS-TYPE	622 - 623
IP68	640 - 643
panel supports: COB	page: 652 - 653

inserts, screw terminal connection



**Q SILVER PLATED CONTACTS**

inserts, screw terminal connection



**Q SILVER PLATED CONTACTS**

description

part No.

part No.

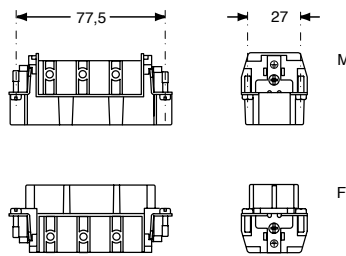
indirect, with plate  
female inserts with female contacts  
male inserts with male contacts

**CPF 06**  
**CPM 06**

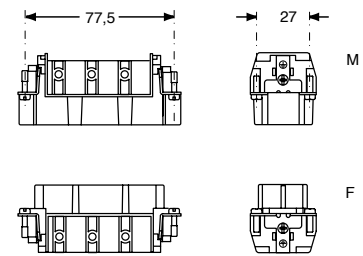
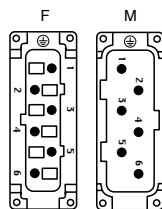
indirect, with plate, use in temperatures up to 180 °C  
female inserts with female contacts, brown  
male inserts with male contacts, brown

**CPF 06 RY**  
**CPM 06 RY**

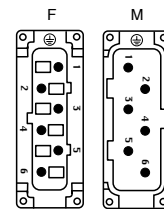
- characteristics according to EN 61984:  
**35A 400/690V 6kV 3**
- certified
- rated voltage according to UL/CSA: 600V
- insulation resistance: ≥ 10 GΩ
- ambient temperature limit: -40 °C ... +125 °C  
(CP RY version up to 180 °C)
- made of self-extinguishing thermoplastic resin UL 94V-0
- mechanical life: ≥ 500 cycles
- contact resistance: ≤ 0,5 mΩ
- for max. current load see the connector inserts derating diagrams below; for more information see page 28



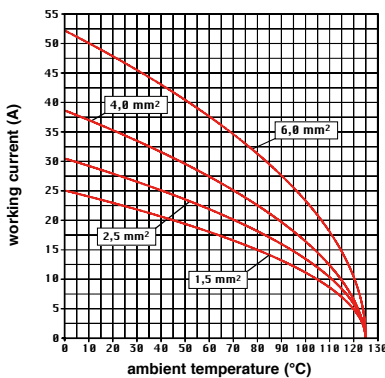
contacts side (front view)



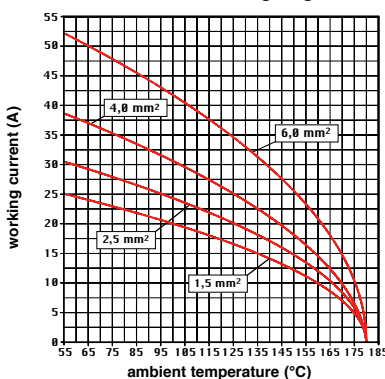
contacts side (front view)



**CP 06 poles connector inserts**  
**Maximum current load derating diagram**



**CP...RY 06 poles connector inserts**  
**Maximum current load derating diagram**



- inserts with plate, for section conductors:  
0,75 - 6 mm² - AWG 18 - 10
- conductors stripping length: 10,5 mm
- terminal screw torque: 1,2 Nm (10,7 lb.in),  
information see page 20 and 21

- inserts with plate, for section conductors:  
0,75 - 6 mm² - AWG 18 - 10
- conductors stripping length: 10,5 mm
- terminal screw torque: 1,2 Nm (10,7 lb.in),  
information see page 20 and 21

CP - CP...RY

# CP 12 poles + ⊕ 35A - 400/690V

enclosures:  
size "77.62"

page:

C-TYPE IP65/IP66

424 - 429

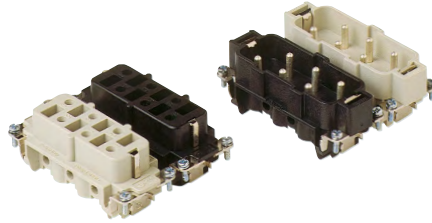
W-TYPE for aggressive environments

525

E-Xtreme® corrosion proof

546

## inserts, screw terminal connection



## Q SILVER PLATED CONTACTS

description

part No.

part No.

indirect, with plate  
female inserts No. (1-6), white and black  
male inserts No. (1-6), white and black

CPF 06  
CPM 06

CPF 06 N  
CPM 06 N

- characteristics according to EN 61984:

**35A 400/690V 6kV 3**

- certified

- rated voltage according to UL/CSA: 600V

- insulation resistance:  $\geq 10 \text{ G}\Omega$

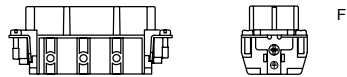
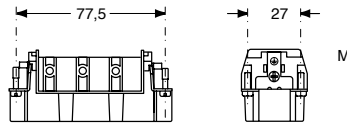
- ambient temperature limit:  $-40 \text{ }^\circ\text{C} \dots +125 \text{ }^\circ\text{C}$   
(CP RY version up to  $180 \text{ }^\circ\text{C}$ )

- made of self-extinguishing thermoplastic resin UL 94V-0

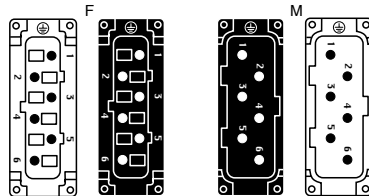
- mechanical life:  $\geq 500$  cycles

- contact resistance:  $\leq 0,5 \text{ m}\Omega$

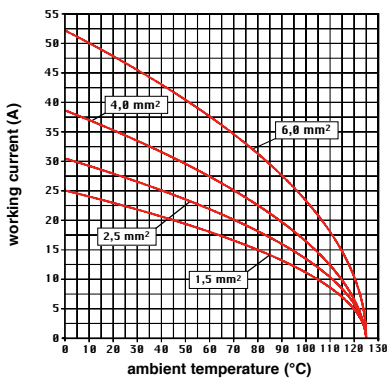
- for max. current load see the connector inserts derating diagrams below; for more information see page 28



contacts side (front view)



CP 12 poles connector inserts  
Maximum current load derating diagram



- inserts with plate, for section conductors:

0,75 - 6 mm² - AWG 18 - 10

- conductors stripping length: 10,5 mm

- terminal screw torque: 1,2 Nm (10,7 lb.in),  
information see page 20 and 21