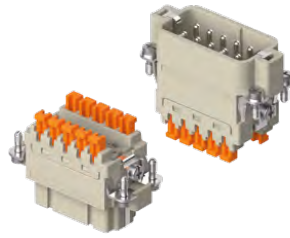


CSAH-SQUICH® 10 poles + ⊕ 16A - 250V

enclosures: size "49.16"	page:
IL-BRID	374 - 377, 382
CZ7 IP67, single lever	384
W-TYPE for aggressive environments	519
E-Xtreme® corrosion proof	540
EMC	576
panel supports: COB + adaptor	page: 652 - 654

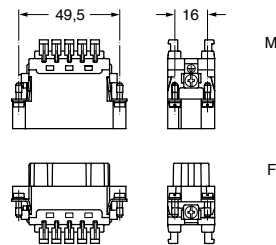
inserts, spring terminal connections without tools



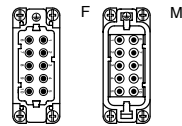
description	part No.
-------------	----------

spring terminals with actuator button	CSAHF 10
female inserts with female contacts	CSAHM 10
male inserts with male contacts	

- characteristics according to EN 61984:
16A 250V 4kV 3
16A 400V 4kV 2
- cULus (UL for USA and Canada),
- ENEC certified
- rated voltage according to UL/CSA: 600V
- insulation resistance: $\geq 10 \text{ G}\Omega$
- ambient temperature limit: $-40 \text{ }^\circ\text{C} \dots +125 \text{ }^\circ\text{C}$
- made of self-extinguishing thermoplastic resin
UL 94V-0
- mechanical life: ≥ 500 cycles
- contact resistance: $\leq 3 \text{ m}\Omega$
- for max. current load see the connector inserts derating diagram below; for more information see page 28



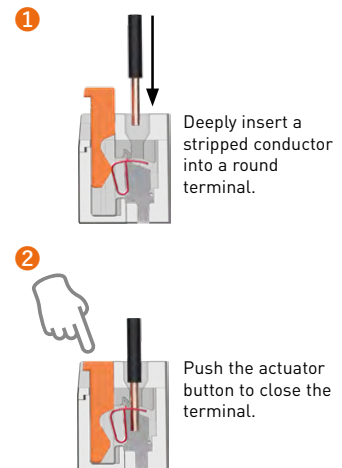
contacts side (front view)



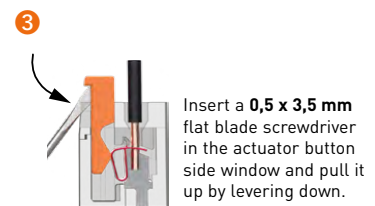
- inserts for connectors with the following sections:
0,14 - 2,5 mm² - AWG 26 - 14
- for wires with crimped ferrule, usable section:
up to 1,5 mm² (AWG 16)
- conductors stripping length: 9...11 mm

SQUICH®-spring connection technology

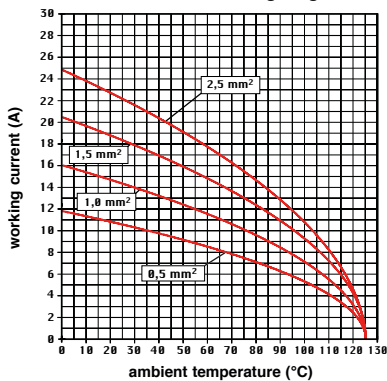
WIRING



RE-OPENING



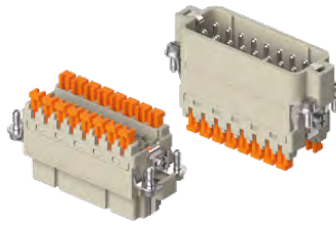
CSAH 10 poles connector inserts
Maximum current load derating diagram



CSAH-SQUICH® 16 poles + ⊕ 16A - 250V

enclosures: size "66.16"	page:
IL-BRID	378 - 382
CZ7 IP67, single lever	385
W-TYPE for aggressive environments	520
E-Xtreme® corrosion proof	541
EMC	577
panel supports: COB + adaptor	page: 652 - 654

inserts, spring terminal connections without tools



description	part No.
-------------	----------

spring terminals with actuator button
female inserts with female contacts
male inserts with male contacts

CSAHF 16
CSAHM 16

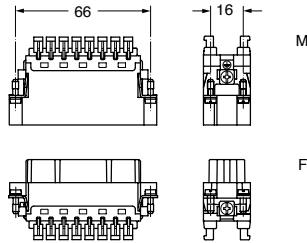
- characteristics according to EN 61984:

16A 250V 4kV 3
16A 400V 4kV 2

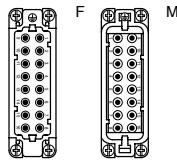
- cULus (UL for USA and Canada),

ERC certified

- rated voltage according to UL/CSA: 600V
- insulation resistance: $\geq 10 \text{ G}\Omega$
- ambient temperature limit: $-40 \text{ }^\circ\text{C} \dots +125 \text{ }^\circ\text{C}$
- made of self-extinguishing thermoplastic resin UL 94V-0
- mechanical life: ≥ 500 cycles
- contact resistance: $\leq 3 \text{ m}\Omega$
- for max. current load see the connector inserts derating diagram below; for more information see page 28



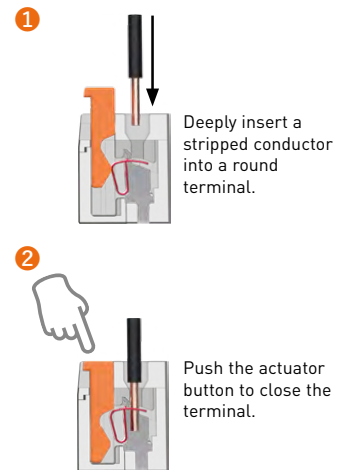
contacts side (front view)



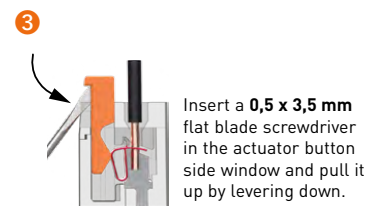
- inserts for connectors with the following sections: 0,14 - 2,5 mm² - AWG 26 - 14
- for wires with crimped ferrule, usable section: up to 1,5 mm² (AWG 16)
- conductors stripping length: 9...11 mm

SQUICH®-spring connection technology

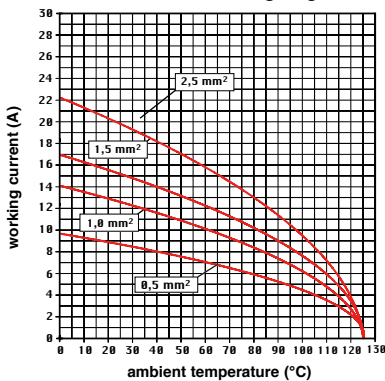
WIRING



RE-OPENING



CSAH 16 poles connector inserts
Maximum current load derating diagram



enclosures:
size "66.40"

page:

C-TYPE IP65/IP66

431 - 434

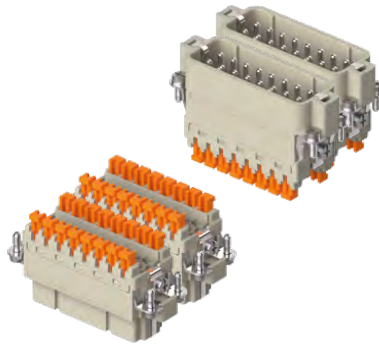
W-TYPE for aggressive environments

527

E-Xtreme® corrosion proof

548

inserts,
spring terminal connections without tools



description

part No.

part No.

spring terminals with actuator button
female inserts, No. (1-16) and (17-32)
male inserts, No. (1-16) and (17-32)

CSAHF 16
CSAHM 16

CSAHF 16 N
CSAHM 16 N

- characteristics according to EN 61984:

16A 250V 4kV 3

16A 400V 4kV 2

- cULus (UL for USA and Canada),



ERC certified

- rated voltage according to UL/CSA: 600V

- insulation resistance: $\geq 10 \text{ G}\Omega$

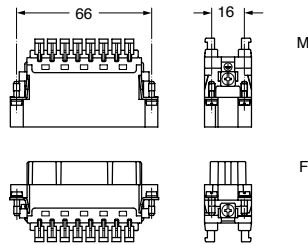
- ambient temperature limit: $-40 \text{ }^\circ\text{C} \dots +125 \text{ }^\circ\text{C}$

- made of self-extinguishing thermoplastic resin UL 94V-0

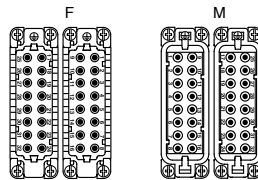
- mechanical life: ≥ 500 cycles

- contact resistance: $\leq 3 \text{ m}\Omega$

- for max. current load see the connector inserts derating diagram below; for more information see page 28



contacts side (front view)



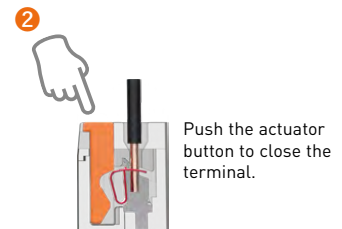
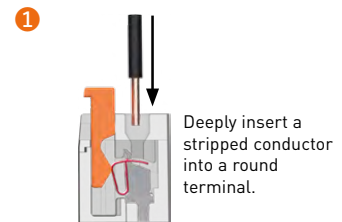
- inserts for connectors with the following sections:
0,14 - 2,5 mm² - AWG 26 - 14

- for wires with crimped ferrule, usable section:
up to 1,5 mm² (AWG 16)

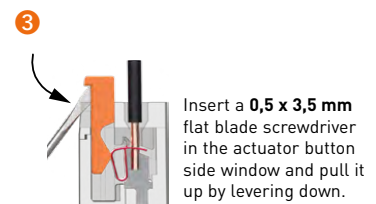
- conductors stripping length: 9...11 mm

SQUICH®-spring connection technology

WIRING



RE-OPENING



CSAH 32 poles connector inserts
Maximum current load derating diagram

