

inserts

CK	3 poles + ⊕	58
CK	4 poles + ⊕	58
CKS	3 poles + ⊕	-
CKS	4 poles + ⊕	-
CKSH	3 poles + ⊕	63
CKSH	4 poles + ⊕	63
CD	8 poles	67
CQ4	2 poles + ⊕	182
CQ4 H	2 poles + ⊕	183
CQ4	3 poles + ⊕	184
CQ	5 poles + ⊕	186
CQ	7 poles + ⊕	187
CQ	12 poles + ⊕	189
CQ	21 poles	190

page:

bulkhead mounting housings
straight and angled

hoods



description	part No. (entry Pg 11)	part No. (entry M20)	part No. (entry Pg 11)	part No. (entry M20 / M25)
with stainless steel lever and gasket	CKAXS 03 I			
without cable entry, with stainless steel lever and gasket	CKAXS 03 IA			
with cable entry, with stainless steel lever and gasket	CKAXS 03 IAP	MKAXS IAP20		
bulkhead hole closed	CKAXS 03 AP	MKAXS AP20		
with pegs, top entry			CKAS 03 V	MKAS V20
with pegs, top entry				MKAS V25
with pegs, side entry			CKAS 03 VA	MKAS VA20
with stainless steel lever, top entry			CKAXS 03 VG	MKAXS VG20
gasket and screw kit for IP66/IP67/IP69 1)	CKR 65		CKR 65	
for CK, CKSH, CQ4, CQ inserts				
gasket and screw kit for IP66/IP67/IP69 1)	CKR 65 D		CKR 65 D	
for CD 08 inserts				

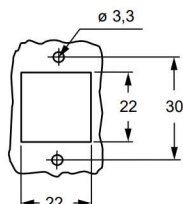
1) To obtain the IP66/IP67/IP69 degree of protection, a kit with insert fixing screw and gasket can be purchased separately.
Several inserts size "21.21" are already supplied with fixing screw and gasket, which ensures IP66/IP67/IP69 degree of protection. See list below, not including any special version:
- CQF/M 07, CQF/M 12

NOTE: Housing type may vary upon specific part No.



versions with glued gasket (DESINA®) upon request

panel cut-out for bulkhead mounting housings



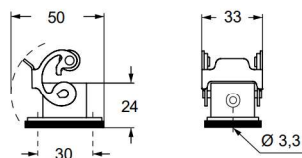
CALUS

Type 12
Type 4/4X only
with CKR 65 (D)

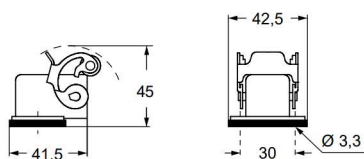
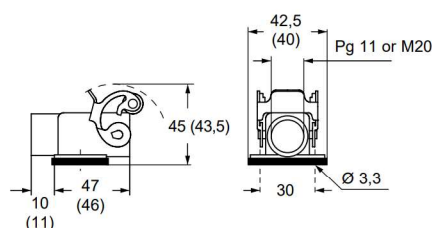


IP66/IP67/IP69 with CKR 65 (D) 1)

CKAXS I

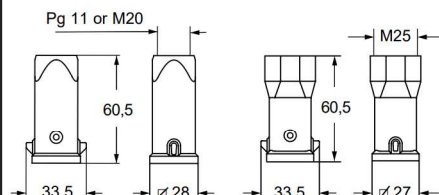


CKAXS IA

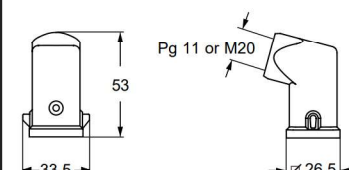
CKAXS IAP (CKAXS AP) and
MKAXS IAP (MKAXS AP)

CKAS V and MKAS V

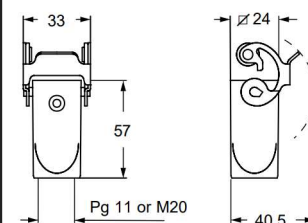
MKAS V25



CKAS VA and MKAS VA



CKAXS VG and MKAXS VG





CKAX - CKA - CKAXX EMC version for electromagnetic compatibility

inserts		page:
CK	3 poles + ⊕	58
CK	4 poles + ⊕	58
CKS	3 poles + ⊕	-
CKS	4 poles + ⊕	-
CKSH	3 poles + ⊕	63
CKSH	4 poles + ⊕	63
CD	8 poles	67
CQ4	2 poles + ⊕	182
CQ4 H	2 poles + ⊕	183
CQ4	3 poles + ⊕	184
CQ	5 poles + ⊕	186
CQ	7 poles + ⊕	187
CQ	12 poles + ⊕	189
CQ	21 poles	190

angled bulkhead mounting housings
with stainless steel lever



angled bulkhead mounting housings
with galvanized steel rigid lever
and stainless steel rigid lever



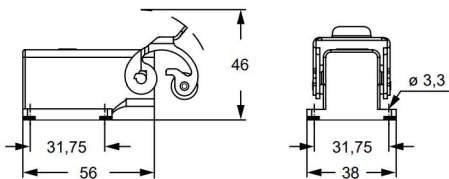
description	part No.	part No.
without cable entry, fixing by 4 screws	CKAXS 03 IA4	
without cable entry, fixing by 4 screws ²⁾		CKAS 03 IA4
without cable entry, fixing by 4 screws ³⁾		CKAXXS 03IA4
gasket and screw kit for IP66/IP67/IP69 ¹⁾ for CK, CKSH, CQ4, CQ inserts	CKR 65	CKR 65
gasket and screw kit for IP66/IP67/IP69 ¹⁾ for CD 08 inserts	CKR 65 D	CKR 65 D

1) To obtain the IP66/IP67/IP69 degree of protection,
a kit with insert fixing screw and gasket can be
purchased separately.
Several inserts size “21.21” are already supplied with
fixing screw and gasket, which ensures IP66/IP67/IP69
degree of protection. See list below, not including any
special version:
- CQF/M 07, CQF/M 12

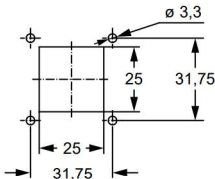
NOTE: Housing type
may vary upon
specific part No.



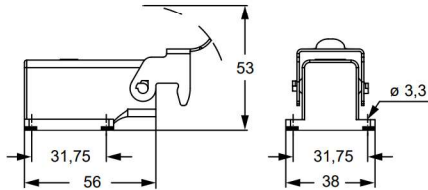
CKAXS IA4



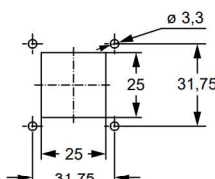
panel cut-out for enclosures



CKAS IA4 - CKAXXS IA4



panel cut-out for enclosures



IP66/IP67/IP69 with CKR 65 (D) ¹⁾

MKAX EMC version for electromagnetic compatibility

inserts

		page:
CK	3 and 4 poles + ⊕	58
CKS	3 and 4 poles + ⊕	-
CKSH	3 and 4 poles + ⊕	63
CD	8 poles	67
CQ4	2 poles + ⊕	182
CQ4 H	2 poles + ⊕	183
CQ4	3 poles + ⊕	184
CQ	5 poles + ⊕	186
CQ	7 poles + ⊕	187
CQ	12 poles + ⊕	189
CQ	21 poles	190

if the counterpart has glued gasket:

CLK 04 SC	239
CX 1/2 BD	243
CXL 2/4 PF/PM	251
CXL 2/4 PFH/PMH	251
CXL PF/PM	251

angled surface mounting housings with stainless steel lever**angled surface mounting housings with stainless steel lever**

description

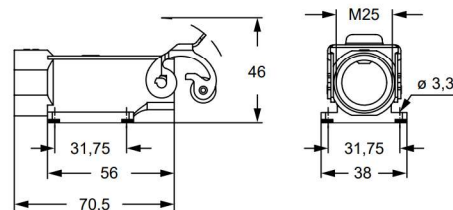
part No.
(entry M25)part No.
(entry M25)

with cable entry, fixing by 4 screws

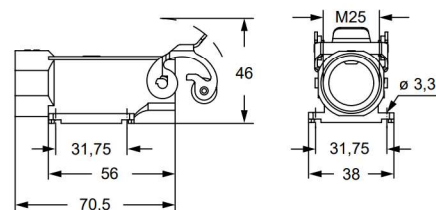
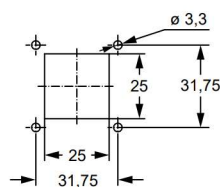
MKAXS IAP25with cable entry, fixing by 4 screws,
bulkhead hole closed (without gasket)**MKAXS AP25**gasket and screw kit for IP66/IP67/IP69 ¹⁾
for CK, CKSH, CQ4, CQ, inserts**CKR 65****CKR 65**gasket and screw kit for IP66/IP67/IP69 ¹⁾
for CD 08 inserts**CKR 65 D****CKR 65 D**¹⁾ To obtain the IP66/IP67/IP69 degree of protection,
a kit with insert fixing screw and gasket can be
purchased separately.Several inserts size "21.21" are already supplied with
fixing screw and gasket, which ensures IP66/IP67/IP69
degree of protection. See list below, not including any
special version:

- CQF/M 07, CQF/M 12
- CX 1/2 BDF/M
- CLK 04 SCF /SCF-H /SCM
- CXL 2/4 PF /PM /PFH /PMH, CXL PF/PM

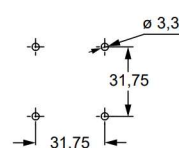
NOTE: Housing type
may vary upon
specific part No.



panel cut-out for enclosures



panel cut-out for enclosures

IP66/IP67/IP69 with CKR 65 (D) ¹⁾



MKA - MKAXX EMC version for electromagnetic compatibility

inserts	page:
CK 3 and 4 poles + ⊕	58
CKS 3 and 4 poles + ⊕	-
CKSH 3 and 4 poles + ⊕	63
CD 8 poles	67
CQ4 2 poles + ⊕	182
CQ4 H 2 poles + ⊕	183
CQ4 3 poles + ⊕	184
CQ 5 poles + ⊕	186
CQ 7 poles + ⊕	187
CQ 12 poles + ⊕	189
CQ 21 poles	190
if the counterpart has glued gasket:	
CLK 04 SC	239
CX 1/2 BD	243
CXL 2/4 PF/PM	251
CXL 2/4 PFH/PMH	251
CXL PF/PM	251

angled surface mounting housings with galvanized steel rigid lever



angled surface mounting housings with stainless steel rigid lever



description	part No. (entry M25)	part No. (entry M25)
with cable entry, fixing by 4 screws	MKAS IAP25	
with cable entry, fixing by 4 screws, bulkhead hole closed (without gasket)	MKAS AP25	
with cable entry, fixing by 4 screws		MKAXXS IAP25
with cable entry, fixing by 4 screws, bulkhead hole closed (without gasket)		MKAXXS AP25
gasket and screw kit for IP66/IP67 ¹⁾ for CK, CKSH, CQ4, CQ, inserts	CKR 65	CKR 65
gasket and screw kit for IP66/IP67 ¹⁾ for CD 08 inserts	CKR 65 D	CKR 65 D

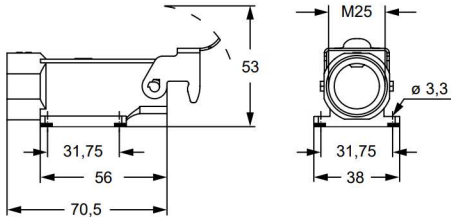
¹⁾ To obtain the IP66/IP67/IP69 degree of protection, a kit with insert fixing screw and gasket can be purchased separately.
Several inserts size "21.21" are already supplied with fixing screw and gasket, which ensures IP66/IP67/IP69 degree of protection. See list below, not including any special version:

- CQF/M 07, CQF/M 12
- CX 1/2 BDF/M
- CLK 04 SCF /SCF-H /SCM
- CXL 2/4 PF /PM /PFH /PMH

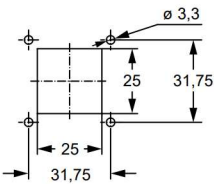
NOTE: Housing type may vary upon specific part No.



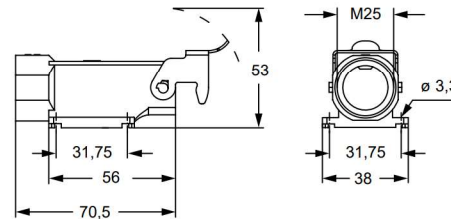
MKAS IAP



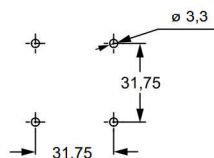
panel cut-out for enclosures



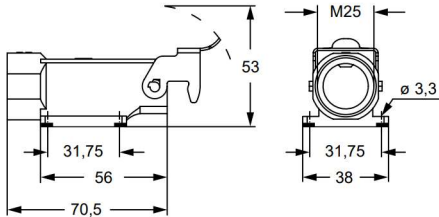
MKAS AP



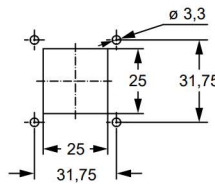
panel cut-out for enclosures



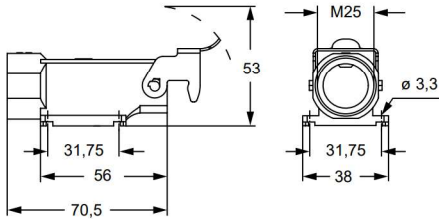
MKAXXS IAP



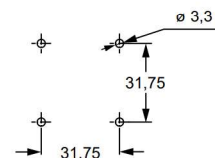
panel cut-out for enclosures



MKAXXS AP



panel cut-out for enclosures



IP66/IP67/IP69 with CKR 65 (D) ¹⁾

MKAX EMC version for electromagnetic compatibility

inserts		page:
CK	3 and 4 poles + ⊕	58
CKS	3 and 4 poles + ⊕	-
CKSH	3 and 4 poles + ⊕	63
CD	8 poles	67
CQ4	2 poles + ⊕	182
CQ4 H	2 poles + ⊕	183
CQ4	3 poles + ⊕	184
CQ	5 poles + ⊕	186
CQ	7 poles + ⊕	187
CQ	12 poles + ⊕	189
CQ	21 poles	190

if the counterpart has glued gasket:

CJ KF	223
CJK 8FT	226
CLK 04 SC	239
CX 1/2 BD	243
CXL 2/4 SF/SM	250
CXL SF/SM	250
CXL 2/4 PF/PM	251
CXL 2/4 PFH/PMH	251
CXL PF/PM	251

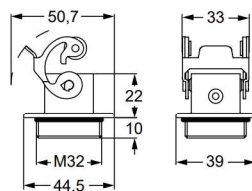
bulkhead mounting housings with stainless steel lever

description	part No. (entry M32)
M32 fixing thread (•) 1)	MKAXS IF
gasket and screw kit for IP66/IP67/IP69 1)	CKR 65
gasket and screw kit for IP66/IP67/IP69 1) specific for CD 08 inserts	CKR 65 D

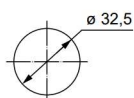
1) To obtain the IP66/IP67/IP69 degree of protection, a kit with insert fixing screw and gasket can be purchased separately.
Several inserts size "21.21" are already supplied with fixing screw and gasket, which ensures IP66/IP67/IP69 degree of protection. See list below, not including any special version:

- CQF/M 07, CQF/M 12
- CJ KF
- CJK 8FT
- CX 1/2 BDF/M
- CLK 04 SCF /SCF-H /SCM
- CXL 2/4 PF /PM /PFH /PMH /SF /SM, CXL SF/M
- CXL PF /PM

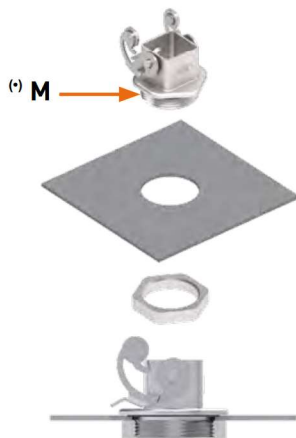
NOTE: Housing type may vary upon specific part No.



panel cut-out for enclosures



(*) Locknut supplied on request, see Cable glands catalogue (article AS M32N metallic).



cURus
Type 4/4X/12 pending



IP66/IP67/IP69 with CKR 65 (D) 1)



MKA - MKAXX EMC version for electromagnetic compatibility

inserts	page:
CK 3 and 4 poles + ⊕	58
CKS 3 and 4 poles + ⊕	-
CKSH 3 and 4 poles + ⊕	63
CD 8 poles	67
CQ4 2 poles + ⊕	182
CQ4 H 2 poles + ⊕	183
CQ4 3 poles + ⊕	184
CQ 5 poles + ⊕	186
CQ 7 poles + ⊕	187
CQ 12 poles + ⊕	189
CQ 21 poles	190
if the counterpart has glued gasket:	
CJ KF	223
CJK 8FT	226
CLK 04 SC	239
CX 1/2 BD	243
CXL 2/4 SF/SM	250
CXL SF/SM	250
CXL 2/4 PF/PM	251
CXL 2/4 PFH/PMH	251
CXL PF/PM	251

bulkhead mounting housings with galvanized steel rigid lever



bulkhead mounting housings with stainless steel rigid lever



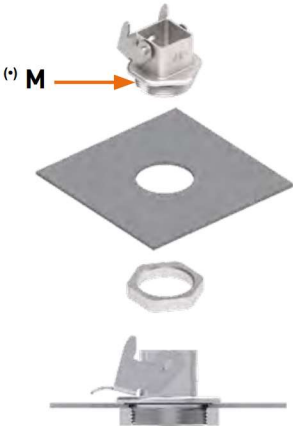
description	part No. (entry M32)	part No. (entry M32)
M32 fixing thread (°) 1)	MKA S IF	
M32 fixing thread (°) 1)		MKA X S IF
gasket and screw kit for IP66/IP67/IP69 1)	CKR 65	CKR 65
gasket and screw kit for IP66/IP67/IP69 1) specific for CD 08 inserts	CKR 65 D	CKR 65 D

1) To obtain the IP66/IP67/IP69 degree of protection, a kit with insert fixing screw and gasket can be purchased separately.
Several inserts size “21.21” are already supplied with fixing screw and gasket, which ensures IP66/IP67/IP69 degree of protection. See list below, not including any special version:
- CQF/M 07, CQF/M 12
- CJ KF
- CJK 8FT
- CX 1/2 BDF/M
- CLK 04 SCF /SCF-H /SCM
- CXL 2/4 PF /PM /PFH /PMH /SF /SM, CXL SF/M
- CXL PF /PM

NOTE: Housing type may vary upon specific part No.



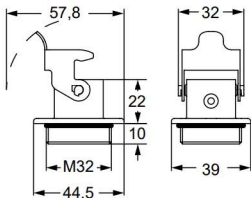
(*) Locknut supplied on request, see Cable glands catalogue (article AS M32N metallic).



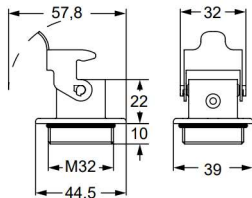
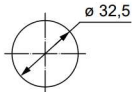
cURus
Type 4/4X/12 pending



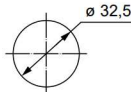
IP66/IP67/IP69 with CKR 65 (D) 1)



panel cut-out for enclosures



panel cut-out for enclosures



MKAX EMC version for electromagnetic compatibility

inserts		page:
CK	3 and 4 poles + ⊕	58
CKS	3 and 4 poles + ⊕	-
CKSH	3 and 4 poles + ⊕	63
CD	8 poles	67
CQ4	2 poles + ⊕	182
CQ4 H	2 poles + ⊕	183
CQ4	3 poles + ⊕	184
CQ	5 poles + ⊕	186
CQ	7 poles + ⊕	187
CQ	12 poles + ⊕	189
CQ	21 poles	190

if the counterpart has glued gasket:

CLK 04 SC	239
CX 1/2 BD	243
CXL 2/4 PF/PM	251
CXL 2/4 PFH/PMH	251
CXL PF/PM	251

**bulkhead mounting housings
with stainless steel lever**

description

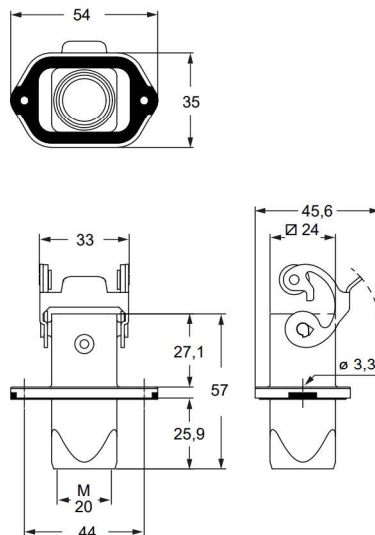
part No.
(entry M20)M20 cable entry ¹⁾**MKAXS IVG20**gasket and screw kit
for IP66/IP67/IP69 ¹⁾**CKR 65**gasket and screw kit for IP66/IP67/IP69 ¹⁾
specific for CD 08 inserts**CKR 65 D**

¹⁾ To obtain the IP66/IP67/IP69 degree of protection, a kit with insert fixing screw and gasket can be purchased separately.

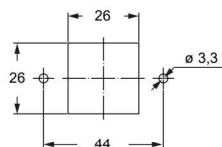
Several inserts size "21.21" are already supplied with fixing screw and gasket, which ensures IP66/IP67/IP69 degree of protection. See list below, not including any special version:

- CQF/M 07, CQF/M 12
- CX 1/2 BDF/M
- CLK 04 SCF /SCF-H /SCM
- CXL 2/4 PF /PM /PFH /PMH /SF /SM
- CXL PF /PM

☒ NOTE: Housing type may vary upon specific part No.



panel cut-out for enclosures



cURus

Type 12 / Type 4/4X only with CKR 65 (D) pending

IP66/IP67/IP69 with CKR 65 (D) ¹⁾



MKA - MKAXX EMC version for electromagnetic compatibility

inserts	page:
CK 3 and 4 poles + ⊕	58
CKS 3 and 4 poles + ⊕	-
CKSH 3 and 4 poles + ⊕	63
CD 8 poles	67
CQ4 2 poles + ⊕	182
CQ4 H 2 poles + ⊕	183
CQ4 3 poles + ⊕	184
CQ 5 poles + ⊕	186
CQ 7 poles + ⊕	187
CQ 12 poles + ⊕	189
CQ 21 poles	190
if the counterpart has glued gasket:	
CLK 04 SC	239
CX 1/2 BD	243
CXL 2/4 PF/PM	251
CXL 2/4 PFH/PMH	251
CXL PF/PM	251

bulkhead mounting housings with galvanized steel rigid lever



bulkhead mounting housings with stainless steel rigid lever

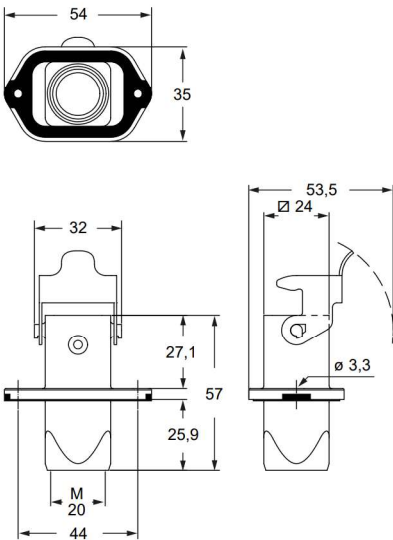


description	part No. (entry M20)	part No. (entry M20)
M20 cable entry 1)	MKAS IVG20	
M20 cable entry 1)		MKAXXS IVG20
gasket and screw kit for IP66/IP67/IP69 1)	CKR 65	CKR 65
gasket and screw kit for IP66/IP67/IP69 1) specific for CD 08 inserts	CKR 65 D	CKR 65 D

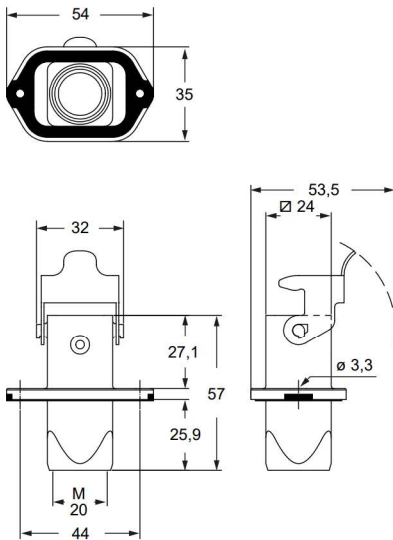
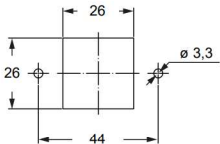
1) To obtain the IP66/IP67/IP69 degree of protection, a kit with insert fixing screw and gasket can be purchased separately.
Several inserts size “21.21” are already supplied with fixing screw and gasket, which ensures IP66/IP67/IP69 degree of protection. See list below, not including any special version:

- CQF/M 07, CQF/M 12
- CX 1/2 BDF/M
- CLK 04 SCF /SCF-H /SCM
- CXL 2/4 PF /PM /PFH /PMH /SF /SM
- CXL PF /PM

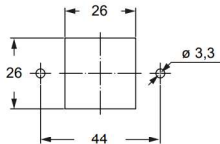
NOTE: Housing type may vary upon specific part No.



panel cut-out for enclosures



panel cut-out for enclosures



cURus
Type 12 / Type 4/4X only with CKR 65 (D) pending



IP66/IP67/IP69 with CKR 65 (D) 1)

MKAX - MKA - MKAXX EMC version for electromagnetic compatibility**inserts**

		page:
CK	3 and 4 poles + ⊕	58
CKS	3 and 4 poles + ⊕	-
CKSH	3 and 4 poles + ⊕	63
CD	8 poles	67
CQ4	2 poles + ⊕	182
CQ4 H	2 poles + ⊕	183
CQ4	3 poles + ⊕	184
CQ	5 poles + ⊕	186
CQ	7 poles + ⊕	187
CQ	12 poles + ⊕	189
CQ	21 poles + ⊕	190

if the counterpart has glued gasket:

CLK 04 SC	239
CX 1/2 BD	243
CXL 2/4 PF/PM	251
CXL 2/4 PFH/PMH	251
CXL PF/PM	251

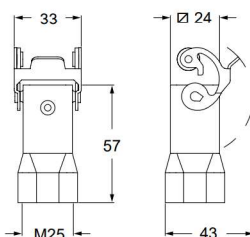
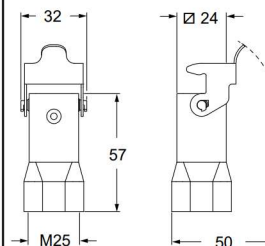
hoods**with stainless steel lever****hoods****with galvanized steel rigid lever and stainless steel rigid lever****GALVANIZED 2)****STAINLESS 3)**

description	part No. (entry M25)	part No. (entry M25)
top entry	MKAXS VG25	
top entry 2)		MKAS VG25
top entry 3)		MKAXXS VG25
gasket and screw kit for IP66/IP67/IP69 1)	CKR 65	CKR 65
gasket and screw kit for IP66/IP67/IP69 1) for CD 08 inserts	CKR 65 D	CKR 65 D

1) To obtain the IP66/IP67/IP69 degree of protection, a kit with insert fixing screw and gasket can be purchased separately.
Several inserts size "21.21" are already supplied with fixing screw and gasket, which ensures IP66/IP67/IP69 degree of protection. See list below, not including any special version:

- CQF/M 07, CQF/M 12
- CX 1/2 BDF/M
- CLK 04 SCF /SCF-H /SCM
- CXL 2/4 PF /PM /PFH /PMH, CXL PF/PM

NOTE: Housing type may vary upon specific part No.

**MKAXS VG****MKAS VG - MKAXXS VG**

cURus
Type 12 / Type 4/4X only with CKR 65 (D) pending



IP66/IP67/IP69 with CKR 65 (D) 1)



CQ EMC version for electromagnetic compatibility

inserts		page:
CQ 04/2	4 poles + 2 poles + ⊕	191
CQ 08	8 poles + ⊕	192
CQ 17	17 poles + ⊕	193

metallized insulating enclosures

bulkhead mounting housings
with single lever



angled bulkhead mounting housings
with single lever



description	part No.	part No.	entry Pg
-------------	----------	----------	-------------

with lever and gasket

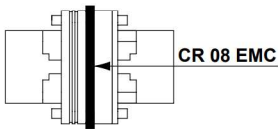
CQS 08 I

without cable gland, with lever, angled
with cable entry, with lever, angled

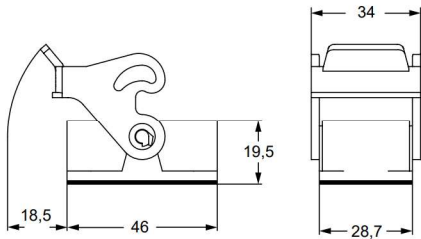
CQS 08 IA
CQS 08 IAP 21

ASSEMBLY INSTRUCTIONS

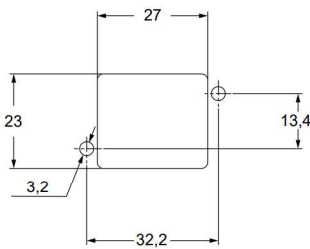
When using an EMC “CQS 08” series enclosure with a male insert, replace the standard gasket provided on the male insert with a conductive gasket CR 08 EMC, to be ordered separately (see page 575).



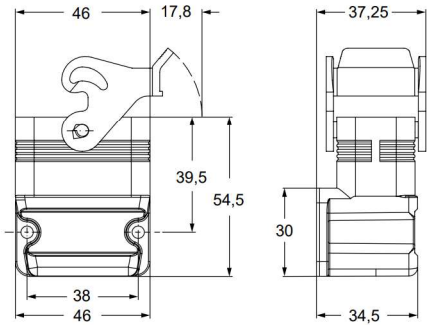
CQS I



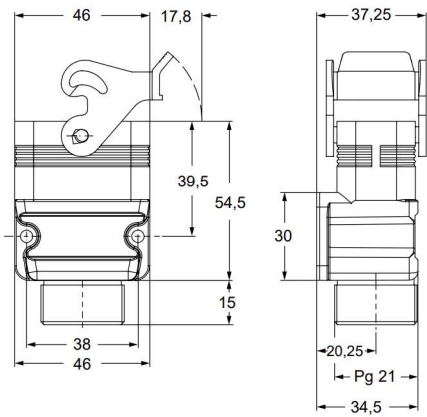
panel cut-out for CQ I enclosure



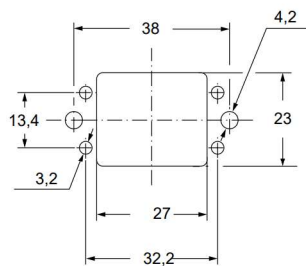
CQS IA



CQS IAP



panel cut-out for CQ IA - CQ IAP enclosure



CU[®]US Type 12



CQ EMC version for electromagnetic compatibility

inserts		page:
CQ 04/2	4 poles + 2 poles + ⊕	191
CQ 08	8 poles + ⊕	192
CQ 17	17 poles + ⊕	193

hoods with 2 pegs



hoods with single lever



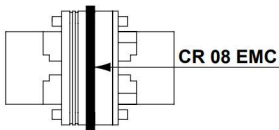
metallized insulating enclosures

description	part No.	entry Pg	part No.	entry Pg
with pegs, side entry ¹⁾	CQS 08 VA	16		
with pegs, top entry ¹⁾	CQS 08 V	21		
with lever, top entry ¹⁾			CQS 08 VG	21

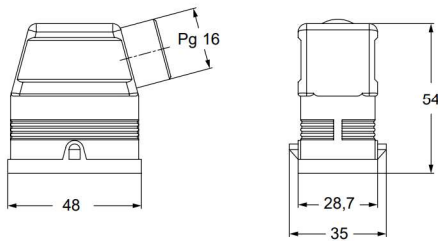
¹⁾ Pg male thread on exterior enclosure

ASSEMBLY INSTRUCTIONS

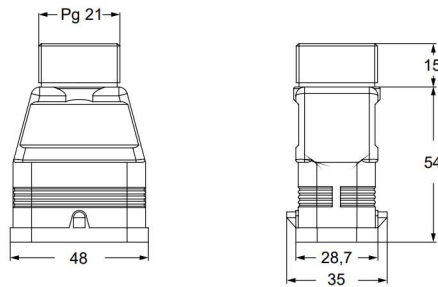
When using an EMC “CQS 08” series enclosure with a male insert, replace the standard gasket provided on the male insert with a conductive gasket CR 08 EMC, to be ordered separately (see page 575).



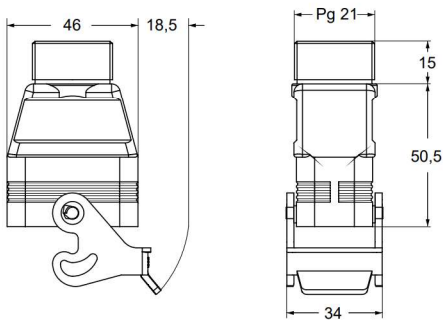
CQS VA



CQS V



CQS VG





CALUS[®] Type 12





CR - CRQ EMC version for electromagnetic compatibility

conductive gasket for CQM male inserts	thermoplastic resin cable glands
	

description	part No.	part No.
conductive gasket for CQM male inserts	CR 08 EMC	CRQ 16 CRQ 21
cable gland head and gasket for CQS 08 VA enclosure		
cable gland head and gasket for CQS 08 V, VG and IAP enclosure		

CR 08 EMC

CRQ 16 and CRQ 21

part No.	A	B	C	D	E	Ø	Ch
CRQ 16	15,5	21,5	20,25	13,5	6,75	21	27
CRQ 21	18,2	27,5	25	15,5	9	26,5	33

cable diameters for cable glands:

- **CRQ 16:** 10 - 14,5 mm (4 - 7 mm on request)
- **CRQ 21:** 14 - 18 mm (7 - 10 mm on request)

ASSEMBLY INSTRUCTIONS

Place the cable shield mesh between the CRQ cable gland gasket and the seat of the gasket itself.

EMC

CZ - MZ and CZF - MZF EMC version for electromagnetic compatibility

inserts

CD	15 poles + ⊕	68
CDA	10 poles + ⊕	98
CSAH	10 poles + ⊕	99
CDC	10 poles + ⊕	104
MIXO	1 module	264 - 316

page:

housings and cover

hoods and cover

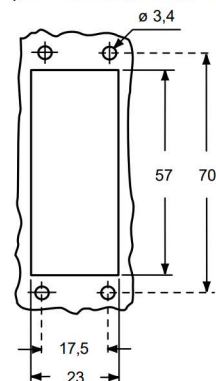
The covers for L, SL and LG versions cannot be used together with coding pins. If this application is required, please contact ILME S.p.A.



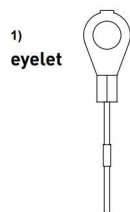
description	part No.	entry Pg	part No.	entry M	part No.	entry Pg	part No.	entry M
bulkhead mounting housing with lever and gasket	CZ7IS 15 L	--						
surface mounting housing with lever	CZ7PS 15 L2	16 x 2	MZ7PS 15L225	25 x 2				
cover with pegs and gasket (for 1 lever enclosures) ¹⁾	CZCS 15 L							
cover with pegs and gasket (for 1 lever enclosures) ²⁾	CZCS 15 SL							
enclosure with pegs and gasket, side entry					CZOS 15 L	16	MZOS 15 L20	20
enclosure with pegs and gasket, side entry							MZOS 15 L25	25
enclosure with pegs and gasket, side entry, high construction, without adapter ³⁾					CZFOS 15 L21	21	MZFOS 15 L25	25
enclosure with pegs and gasket, top entry					CZVS 15 L	13,5	MZVS 15 L20	20
enclosure with pegs and gasket, top entry, high construction, without adapter ³⁾					CZFVS 15L221	21	MZFVS 15 L25	25
cover with lever (for enclosures with pegs) ²⁾					CZ7CS 15 LG			

³⁾ enclosure without adapter, threaded on the enclosure body, to be used only with a complete cable gland.

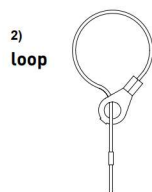
panel cut-out for bulkhead mounting housings



For fixing on housings



For fixing on hoods



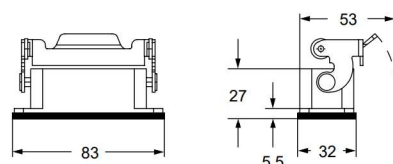
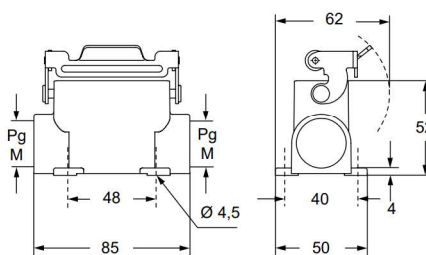
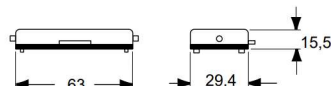
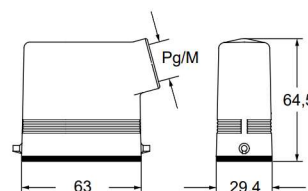
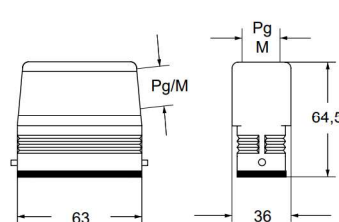
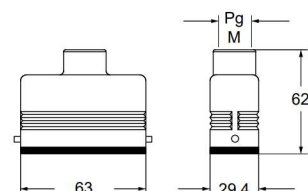
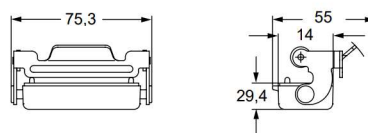
ILME Type 4/4X/12



insulating cable gland or fittings without gasket



cable gland with O-Ring gasket

CZ7IS L**CZ7PS L and MZ7PS L****CZCS L (SL)****CZOS L and MZOS L****CZFOS L - MZFOS L and CZFVS L - MZFVS L****CZVS L and MZVS L****CZ7CS LG**

CZ-CZA-CZF and MZ-MZA-MZF EMC version for electromagnetic compatibility

inserts		page:
CD	25 poles + ⊕	69
CDD	38 poles + ⊕	77
CDA	16 poles + ⊕	100
CSAH	16 poles + ⊕	101
CDC	16 poles + ⊕	105

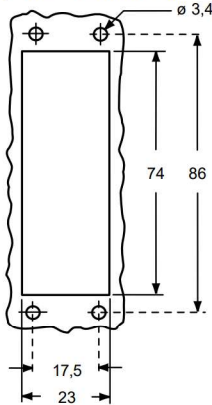
The covers for L, SL and LG versions cannot be used together with coding pins. If this application is required, please contact ILME S.p.A.



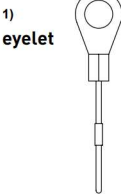
description	part No.	entry Pg	part No	entry M	part No.	entry Pg	part No.	entry M
bulkhead mounting housing with lever and gasket	CZ7IS 25 L	--						
surface mounting housing, with lever, high construction	CZ7PS 25 L2	16 x 2	MZ7PS 25L225	25 x 2				
cover with pegs (for 1 lever enclosures) ¹⁾	CZCS 25 L							
cover with pegs (for 1 lever enclosures) ²⁾	CZCS 25 SL							
enclosure with pegs and gasket, side entry					CZOS 25 L	16	MZOS 25 L20	20
enclosure with pegs and gasket, side entry							MZOS 25 L25	25
enclosure with pegs and gasket, side entry, high construction, without adapter ³⁾					CZFOS 25 L21	21	MZFOS 25 L25	25
enclosure with pegs and gasket, top entry					CZVS 25 L	16		
enclosure with pegs and gasket, top entry ⁴⁾							MZVS 25 L20	20
enclosure with pegs and gasket, top entry, high construction, without adapter ³⁾					CZFVS 25 L21	21	MZFVS 25 L25	25
cover with lever (for enclosures with pegs) ²⁾					CZ7CS 25 LG			

³⁾ enclosure without adapter, threaded on the enclosure body, to be used only with a complete cable gland.
⁴⁾ can only be used with a complete cable gland (to be purchased separately)

panel cut-out for bulkhead mounting housings

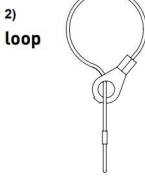


For fixing on housings



CAUS® Type 4/4X/12

For fixing on hoods

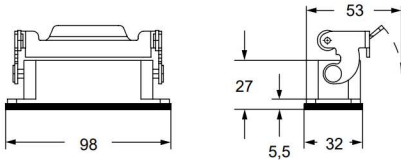


insulating cable gland or fittings without gasket

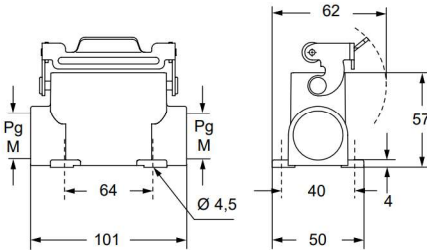


cable gland with O-Ring gasket

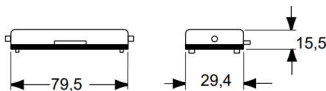
CZ7IS L



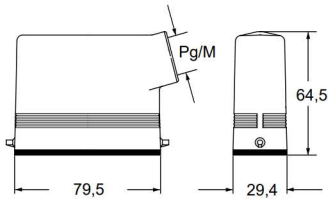
CZ7PS L and MZ7PS L



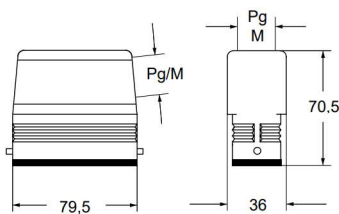
CZCS L (SL)



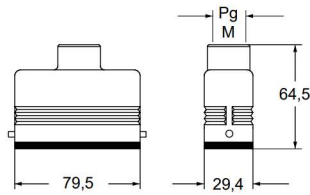
CZOS L and MZOS L



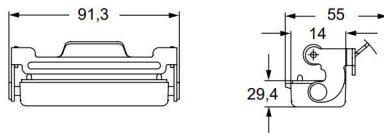
CZFOS L - MZFOS L and CZFVS L - MZFVS L



CZVS L and MZVS L ⁴⁾



CZ7CS LG



inserts		page:
CDD	24 poles + ⊕	76
CDS	9 poles + ⊕	-
CDSH	9 poles + ⊕	86
CDSH NC	6 poles + ⊕	95
CNE	6 poles + ⊕	110
CSE	6 poles + ⊕	-
CSH	6 poles + ⊕	110
CSH S	6 poles + ⊕	122
CCE	6 poles + ⊕	130
CSS	6 poles + ⊕	148
CT, CTSE (16A) *)	6 poles + ⊕	160
CQE	10 poles + ⊕	168
MIXO	2 modules	262 - 317

*) only for enclosure CHIS 06 L

housings and cover



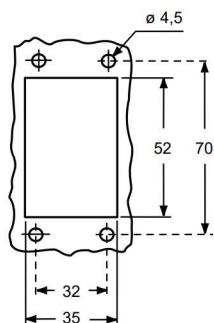
hoods and cover



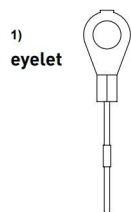
description	part No.	entry Pg	part No	entry M	part No.	entry Pg	part No.	entry M
bulkhead mounting housing with lever and gasket	CHIS 06 L	--						
surface mounting housing, with lever, high construction	CAPS 06 L	21	MAPS 06 L32	32				
cover with pegs (for 1 lever enclosures) ¹⁾	CHCS 06 L							
cover with pegs (for 1 lever enclosures) ²⁾	CHCS 06 SL							
enclosure with pegs, side entry, high construction, without adaptor ³⁾					CFOS 06 L21	21	MFOS 06 L32	32
enclosure with pegs, top entry, high construction, without adaptor ³⁾					CFVS 06 L21	21	MFVS 06 L32	32
cover with lever (for enclosures with pegs) ²⁾					CHCS 06 LG			

³⁾ enclosure without adapter, threaded on the enclosure body, to be used only with a complete cable gland.

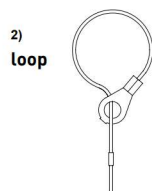
panel cut-out for bulkhead mounting housings



For fixing on housings



For fixing on hoods



CALUS Type 4/4X/12

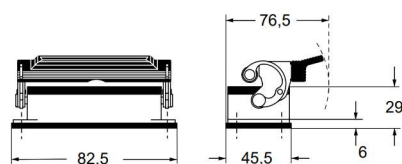


insulating cable gland or fittings without gasket

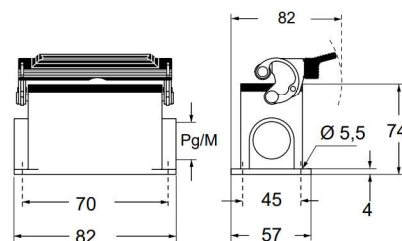


cable gland with O-Ring gasket

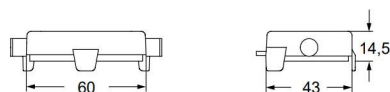
CHIS L



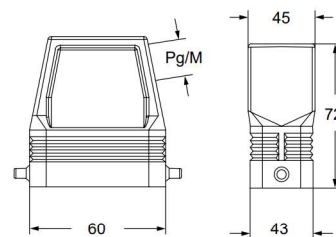
CAPS L and MAPS L



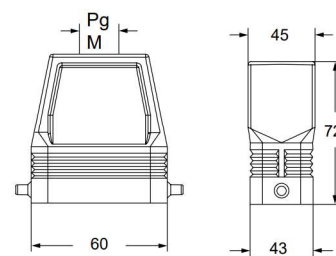
CHCS L (SL)



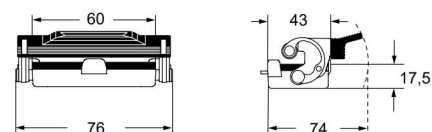
CFOS L and MFOS L



CFVS L and MFVS L



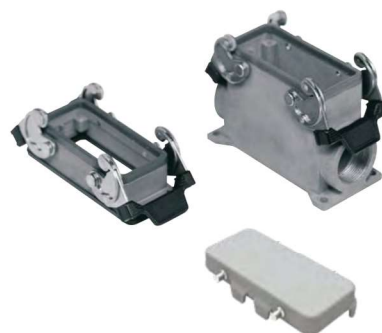
CHCS LG



inserts		page:
CD	40 poles + ⊕	70
CDD	72 poles + ⊕	79
CDS	27 poles + ⊕	-
CDSH	27 poles + ⊕	88
CNE	16 poles + ⊕	112
CSE	16 poles + ⊕	-
CSH	16 poles + ⊕	112
CSH S	16 poles + ⊕	124
CCE	16 poles + ⊕	132
CMSH, CMCE	6+2 (aux) poles + ⊕	138 - 139
CSS	16 poles + ⊕	150
CT, CTS (10A) *)	40 poles + ⊕	156
CT, CTSE (16A) *)	16 poles + ⊕	162
CQE	32 poles + ⊕	170
CQEE	40 poles + ⊕	176
CP	6 poles + ⊕	178
CX	6/12, 6/36 and 12/2 poles + ⊕	197 - 199
CX	4/0 and 4/2 poles + ⊕	200 - 201
MIXO	4 modules	262 - 317

*) only for enclosure CHIS 16

housings and cover

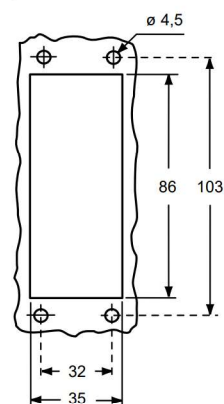
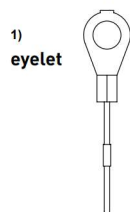
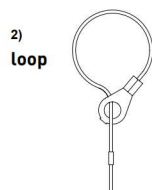


hoods and cover

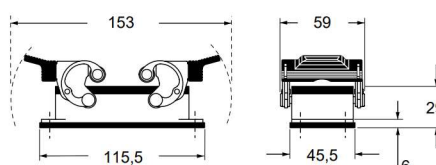


description	part No.	entry Pg	part No	entry M	part No.	entry Pg	part No.	entry M
bulkhead mounting housing with levers and gasket	CHIS 16	--						
surface mounting housing, with levers, high construction	CAPS 16.21	21	MAPS 16.32	32				
cover with 4 pegs (for enclosures with 2 levers) ¹⁾	CHCS 16							
cover with 4 pegs (for enclosures with 2 levers) ²⁾	CHCS 16 S							
enclosure with pegs, side entry					CHOS 16	21	MHOS 16.25	25
enclosure with pegs, side entry							MHOS 16.32	32
enclosure with pegs, side entry, high construction					CAOS 16.29	29	MAOS 16.32	32
enclosure with pegs, side entry, high construction							MAOS 16.40	40
enclosure with pegs, top entry					CHVS 16	21	MHVS 16.25	25
enclosure with pegs, top entry							MHVS 16.32	32
enclosure with pegs, top entry, high construction					CAVS 16.29	29	MAVS 16.32	32
enclosure with pegs, top entry, high construction							MAVS 16.40	40
cover with 2 levers (for enclosures with 4 pegs) ²⁾					CHCS 16 G			

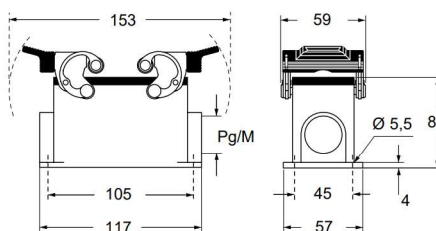
panel cut-out for bulkhead mounting housings

For fixing
on housingsFor fixing
on hoodsType
4/4X/12insulating cable gland or fittings
without gasketcable gland
with O-Ring gasket

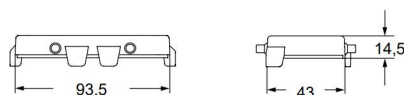
CHIS



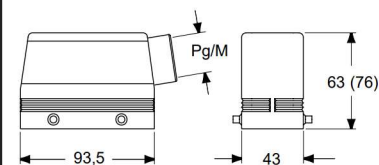
CAPS and MAPS



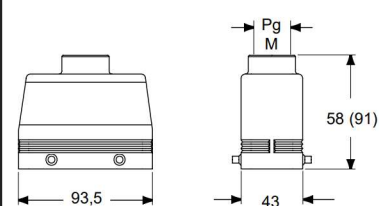
CHCS (S)



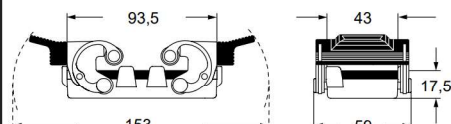
CHOS (CAOS) and MHOS (MAOS)



CHVS (CAVS) and MHVS (MAVS)



CHCS G



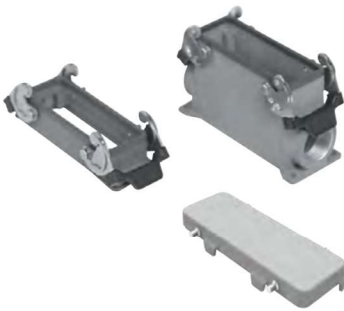


CH - CA and MH - MA EMC version for electromagnetic compatibility

inserts		page:
CD	64 poles + ⊕	72
CDD	108 poles + ⊕	81
CDS	42 poles + ⊕	-
CDSH	42 poles + ⊕	89
CNE	24 poles + ⊕	113
CSE	24 poles + ⊕	-
CSH	24 poles + ⊕	113
CSH S	24 poles + ⊕	125
CCE	24 poles + ⊕	133
CMSH	10+2 (aux) poles + ⊕	140
CMCE	10+2 (aux) poles + ⊕	141
CSS	24 poles + ⊕	151
CT, CTS (10A) *	64 poles + ⊕	157
CT, CTSE (16A) *	24 poles + ⊕	163
CQE	46 poles + ⊕	171
CQEE	64 poles + ⊕	177
CX	4/8 and 6/6 poles + ⊕	204 and 206
MIXO	6 modules	262 - 317

*) only for enclosure CHIS 24

housings and cover

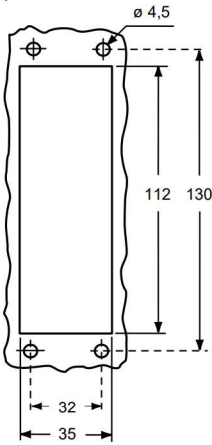


hoods and cover

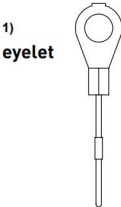


description	part No.	entry Pg	part No	entry M	part No.	entry Pg	part No.	entry M
bulkhead mounting housing with levers and gasket	CHIS 24	--						
surface mounting housing, with levers, high construction	CAPS 24.21	21	MAPS 24.32	32				
cover with 4 pegs (for enclosures with 2 levers) ¹⁾	CHCS 24							
cover with 4 pegs (for enclosures with 2 levers) ²⁾	CHCS 24 S							
enclosure with pegs, side entry					CHOS 24	21	MHOS 24.25	25
enclosure with pegs, side entry							MHOS 24.32	32
enclosure with pegs, side entry, high construction					CAOS 24.29	29	MAOS 24.32	32
enclosure with pegs, side entry, high construction							MAOS 24.40	40
enclosure with pegs, top entry					CHVS 24	21	MHVS 24.25	25
enclosure with pegs, top entry							MHVS 24.32	32
enclosure with pegs, top entry, high construction					CAVS 24.29	29	MAVS 24.32	32
enclosure with pegs, top entry, high construction							MAVS 24.40	40
cover with 2 levers (for enclosures with 4 pegs) ²⁾					CHCS 24 G			

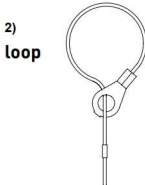
panel cut-out for bulkhead mounting housings



For fixing on housings



For fixing on hoods



CAUS® Type 4/4X/12

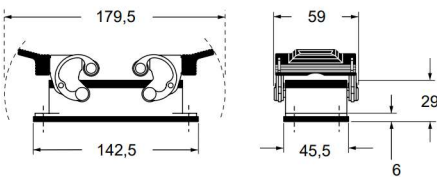


insulating cable gland or fittings without gasket

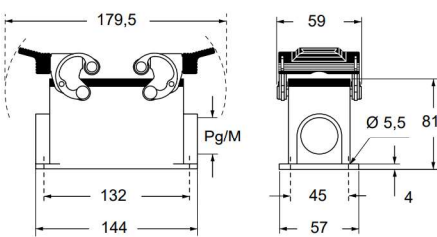


cable gland with O-Ring gasket

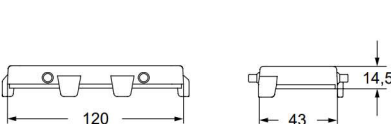
CHIS



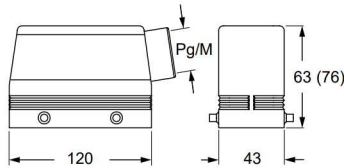
CAPS and MAPS



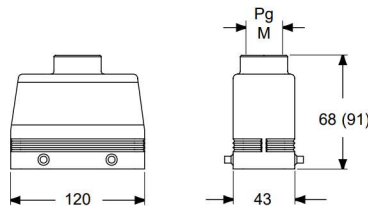
CHCS (S)



CHOS (CAOS) and MHOS (MAOS)



CHVS (CAVS) and MHVS (MAVS)



CHCS G

