



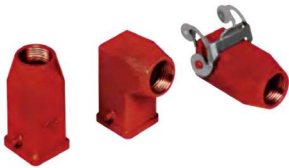
CKA and MKA 180 °C version

inserts		page:
CK RY	3 poles + ⊕	60
CK RY	4 poles + ⊕	60

bulkhead mounting housings
straight and angled



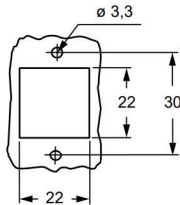
hoods



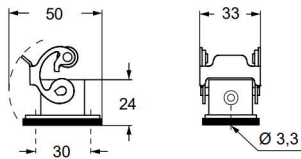
description	part No. (entry Pg 11)	part No. (entry M20)	part No. (entry Pg 11)	part No. (entry M20)
with stainless steel lever and gasket ¹⁾	CKAXR 03 I			
without cable entry, with stainless steel lever and gasket ¹⁾	CKAXR 03 IA			
with cable entry, with stainless steel lever and gasket ¹⁾	CKAXR 03 IAP	MKAXR IAP20		
with cable entry, with stainless steel lever and gasket bulkhead hole closed ¹⁾	CKAXR 03 AP	MKAXR AP20		
with pegs, top entry ¹⁾			CKAR 03 V	MKAR V20
with pegs, side entry ¹⁾			CKAR 03 VA	MKAR VA20
with stainless steel lever, top entry ¹⁾			CKAXR 03 VG	MKAXR VG20

¹⁾ Enclosures with IP44 protection rating

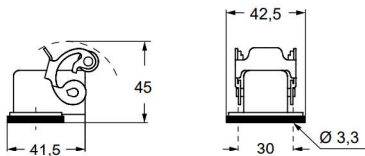
panel cut-out for bulkhead mounting housings



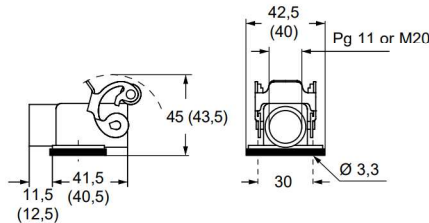
CKAXR I



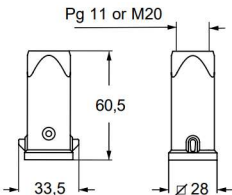
CKAXR IA



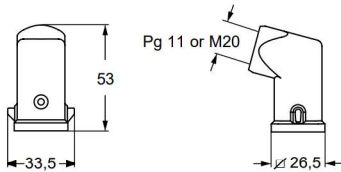
CKAXR IAP (CKAXR AP) and
MKAXR IAP (MKAXR AP)



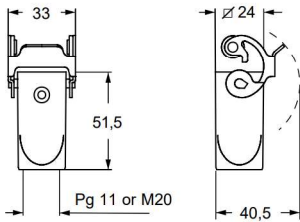
CKAR V and MKAR V



CKAR VA and MKAR VA



CKAXR VG and MKAXR



CU[®]US Type 12



inserts		page:
CK RY	3 poles + ⊕	60
CK RY	4 poles + ⊕	60

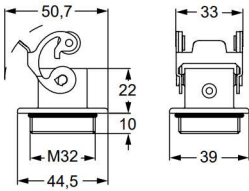
bulkhead mounting housings
with stainless steel lever



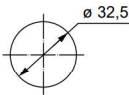
description	part No. (entry - M32)
-------------	---------------------------

M32 fixing thread ^(*) MKAXR IF

^(*) Locknut supplied on request, see Cable glands catalogue (article AS M32N metallic)



panel cut-out for enclosures



cURus
Type 12 pending





MKAXX 180 °C version

inserts		page:
CK RY	3 poles + ⊕	60
CK RY	4 poles + ⊕	60

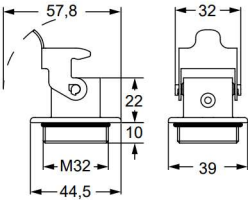
bulkhead mounting housings
with stainless steel rigid lever



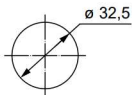
description	part No. (entry - M32)
-------------	---------------------------

M32 fixing thread ^(*) MKAXXR IF

^(*) Locknut supplied on request, see Cable glands catalogue (article AS M32N metallic)



panel cut-out for enclosures



cURus
Type 12 pending



inserts

CNE RY

6 poles + ⊕

page:

116

bulkhead and surface mounting housings and cover



hoods and cover



description

part No.

entry
Pg

part No.

entry
M

part No.

entry
Pg

part No.

entry
M

bulkhead mounting housing with lever and gasket
 surface mounting housing, with lever
 surface mounting housing, with lever, high construction

CZIR 06 L

--

CZPR 06 L

16

MZPR 06 L20

20

CZAPR 06 L

21

MZAPR 06 L32

32

cover with pegs (for enclosures) ¹⁾

CHCR 06 L

cover with pegs (for enclosures) ²⁾

CHCR 06 SL

enclosure with pegs, side entry

CHOR 06 L13

13,5

MHOR 06 L20

20

enclosure with pegs, side entry, high construction

CAOR 06 L21

21

MAOR 06 L32

32

enclosure with pegs, top entry

CHVR 06 L13

13,5

MHVR 06 L20

20

enclosure with pegs, top entry ³⁾

CAVR 06 L21

21

MAVR 06 L32

32

enclosure with pegs, top entry, high construction

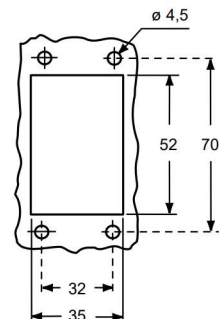
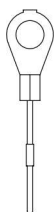
CZCR 06 LG

cover with lever (for hoods) ²⁾

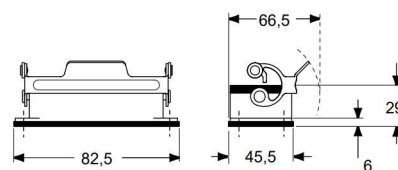
CZCR 06 LG

³⁾ can only be used with a complete cable gland
 (to be purchased separately)

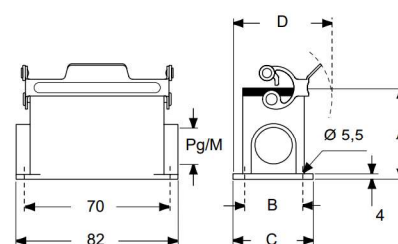
panel cut-out for bulkhead mounting housings

For fixing
on housings1)
eyeletFor fixing
on hoods2)
loopC[®]ALUSType
4/4X/12

CZIR L

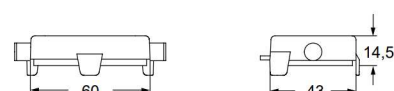


CZPR L - CZAPR L and MZPR L - MZAPR L

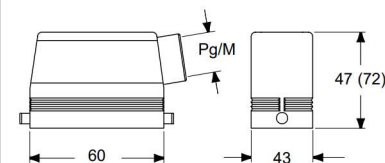


type	A	B	C	D
CZPR L / MZPR L	53	40	52	69,5
CZAPR L / MZAPR L	74	45	57	72

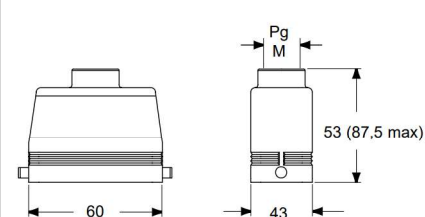
CHCR L (SL)



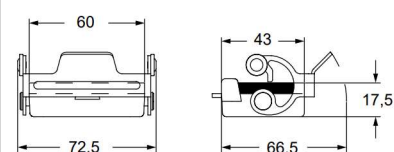
CHOR L (CAOR L) and MHOR L (MAOR L)



CHVR L (CAVR L) and MHVR L (MAVR L)



CZCR LG

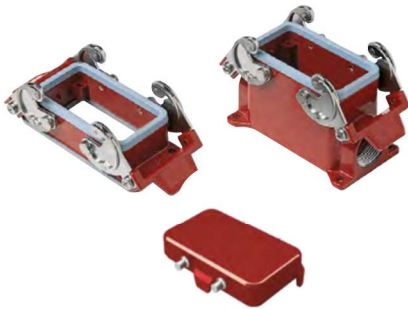




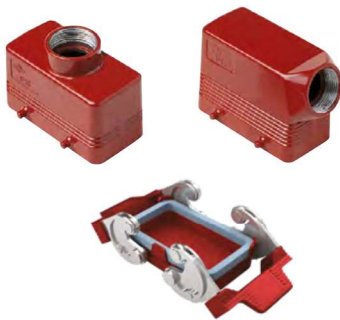
CH - CA and MH - MA 180 °C version

inserts
CNE RY 10 poles + ⊕ page: 117

bulkhead and surface mounting housings and cover



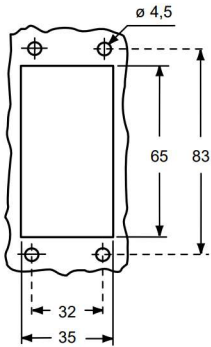
hoods and cover



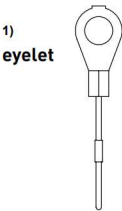
description	part No.	entry Pg	part No	entry M	part No.	entry Pg	part No.	entry M
bulkhead mounting housing with levers and gasket	CHIR 10	--						
surface mounting housing, with levers	CHPR 10	16	MHPR 10.20	20				
surface mounting housing, with levers, high construction	CAPR 10.21	21	MAPR 10.32	32				
cover with 4 pegs (for enclosures) 1)	CHCR 10							
cover with 4 pegs (for enclosures) 2)	CHCR 10 S							
enclosure with pegs, side entry					CHOR 10	16	MHOR 10.20	20
enclosure with pegs, side entry, high construction					CAOR 10.21	21	MAOR 10.32	32
enclosure with pegs, top entry					CHVR 10	16		
enclosure with pegs, top entry 3)							MHVR 10.20	20
enclosure with pegs, top entry, high construction					CAVR 10.21	21	MAVR 10.32	32
cover with 2 levers (for hoods) 2)					CHCR 10 G			

3) can only be used with a complete cable gland (to be purchased separately)

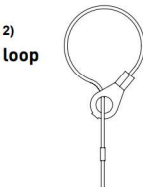
panel cut-out for bulkhead mounting housings



For fixing on housings



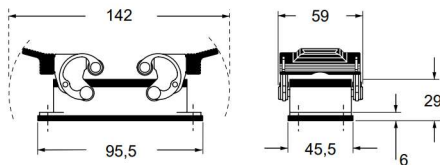
For fixing on hoods



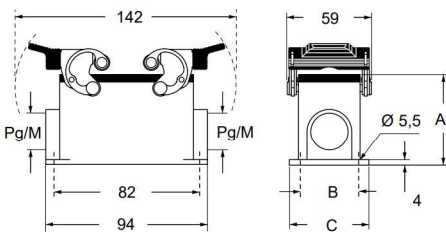
Type 4/4X/12



CHIR



CHPR - CAPR and MHPR - MAPR

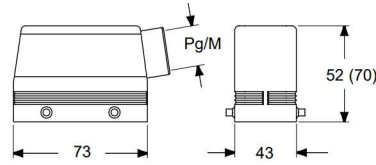


type	A	B	C
CHPR / MHPR	57	40	52
CAPR / MAPR	74	45	57

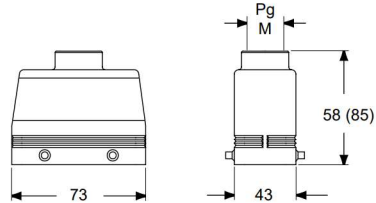
CHCR (S)



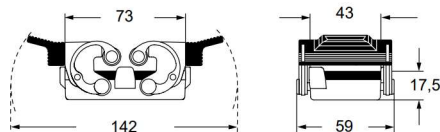
CHOR (CAOR) and MHOR (MAOR)



CHVR (CAVR) and MHVR³⁾ (MAVR)



CHCR G

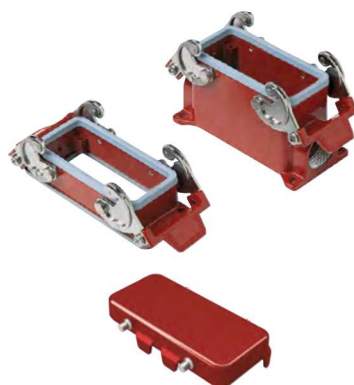


inserts

CNE RY	16 poles + ⊕	118
CP RY	6 poles + ⊕	178
CX RY	4/0 and 4/2 poles + ⊕	202 - 203

page:

bulkhead and surface mounting housings and cover

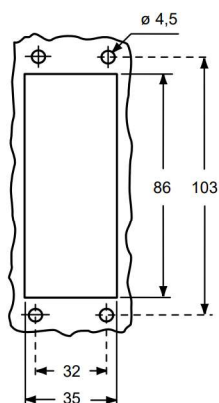
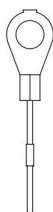


hoods and cover

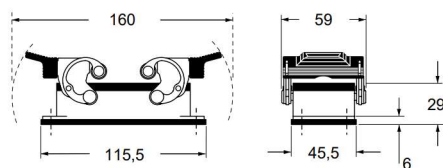


description	part No.	entry Pg	part No	entry M	part No.	entry Pg	part No.	entry M
bulkhead mounting housing with levers and gasket	CHIR 16	--						
surface mounting housing, with levers, high construction	CAPR 16.21	21	MAPR 16.32	32				
cover with 4 pegs (for enclosures) ¹⁾	CHCR 16							
cover with 4 pegs (for enclosures) ²⁾	CHCR 16 S							
enclosure with pegs, side entry					CHOR 16	21	MHOR 16.25	25
enclosure with pegs, side entry, high construction					CAOR 16.21	21	MAOR 16.40	40
enclosure with pegs, top entry					CHVR 16	21	MHVR 16.25	25
enclosure with pegs, top entry, high construction					CAVR 16.21	21	MAVR 16.40	40
cover with 2 levers (for hoods) ²⁾					CHCR 16 G			

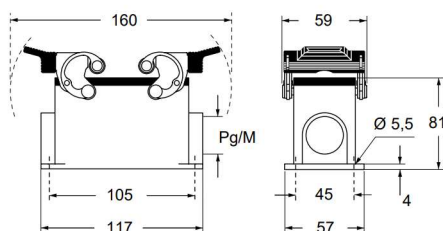
panel cut-out for bulkhead mounting housings

For fixing
on housings1)
eyeletFor fixing
on hoods2)
loopC[®]ALUSType
4/4X/12

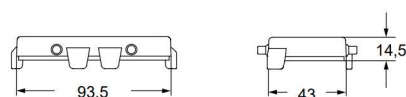
CHIR



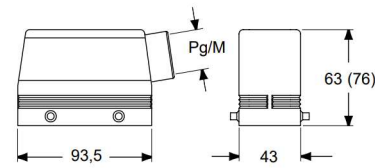
CAPR and MAPR



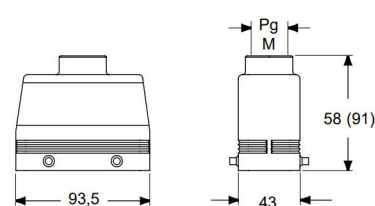
CHCR (S)



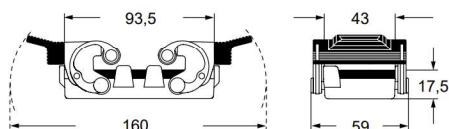
CHOR (CAOR) and MHOR (MAOR)



CHVR (CAVR) and MHVR (MAVR)



CHCR G





CH - CA and MH - MA 180 °C version

inserts		page:
CNE RY	24 poles + ⊕	119
CX RY	4/8 poles + ⊕	204

bulkhead and surface mounting housings and cover

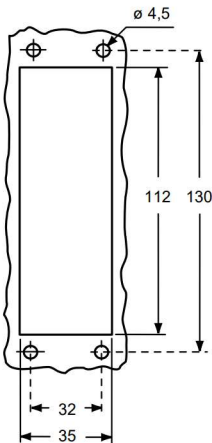


hoods and cover

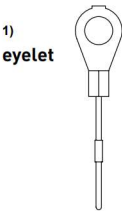


description	part No.	entry Pg	part No	entry M	part No.	entry Pg	part No.	entry M
bulkhead mounting housing with levers and gasket	CHIR 24	--						
surface mounting housing, with levers, high construction	CAPR 24.21	21	MAPR 24.32	32				
cover with 4 pegs (for enclosures) ¹⁾	CHCR 24							
cover with 4 pegs (for enclosures) ²⁾	CHCR 24 S							
enclosure with pegs, side entry					CHOR 24	21	MHOR 24.25	25
enclosure with pegs, side entry, high construction					CAOR 24.29	29	MAOR 24.40	40
enclosure with pegs, top entry					CHVR 24	21	MHVR 24.25	25
enclosure with pegs, top entry, high construction					CAVR 24.29	29	MAVR 24.40	40
cover with 2 levers (for hoods) ²⁾					CHCR 24 G			

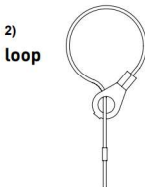
panel cut-out for bulkhead mounting housings



For fixing on housings



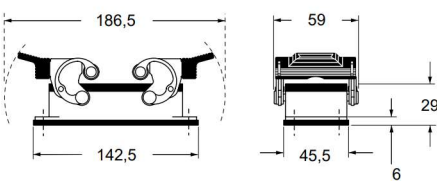
For fixing on hoods



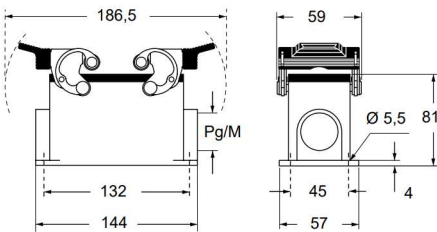
Type 4/4X/12



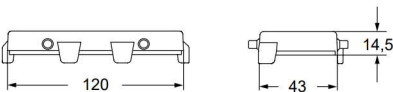
CHIR



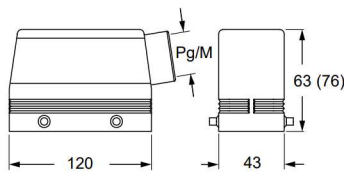
CAPR and MAPR



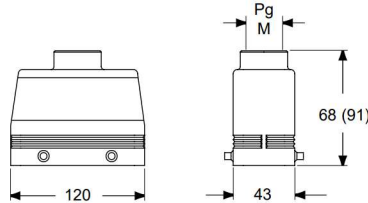
CHCR (S)



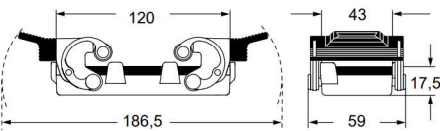
CHOR (CAOR) and MHOR (MAOR)



CHVR (CAVR) and MHVR (MAVR)



CHCR G



CH and MH 180 °C version

inserts

CNE RY48 poles + ⊕120

insert dimensions:
2 x (104 x 27) mm

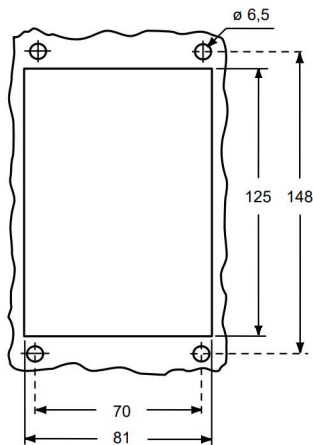
bulkhead and surface mounting housings

hoods

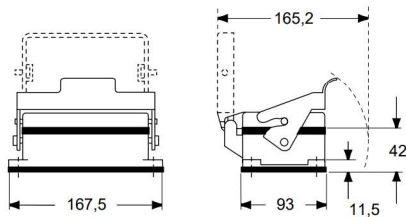


description	part No.	entry Pg	part No	entry M	part No.	entry Pg	part No.	entry M
bulkhead mounting housings, with lever and cover	CHIR 48 LS	--						
surface mounting housings, with lever and cover	CHPR 48 LS	36 x 1/2	MHPR 48 LS40	40 x 1/2				
side entry, with pegs					CHOR 48 L	36	MHOR 48 L40	40
top entry, with pegs					CHVR 48 L	36	MHVR 48 L40	40

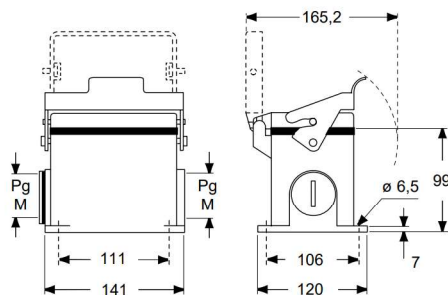
panel cut-out for bulkhead mounting housings



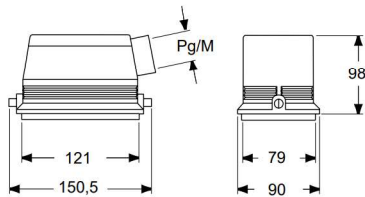
CHIR LS



CHPR LS and MHPR LS



CHOR L and MHOR L



CHVR L and MHVR L

