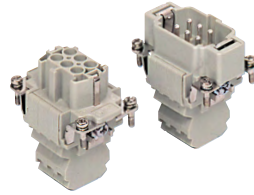


CSS 6 poles + ⊕ 16A - 500V

enclosures: size "44.27"	page:
C-TYPE IP65/IP66	387 - 392
C7 IP67, single lever	436 - 437
V-TYPE IP65/IP66, single lever	444 - 447
BIG hoods	466 - 467
T-TYPE IP65 insulating	480 - 481
T-TYPE / W IP66/IP69 insulating	489
HYGIENIC T-TYPE / H IP66/IP69	501
HYGIENIC T-TYPE / C IP66/IP69, -50 °C	506
W-TYPE for aggressive environments	521
E-Xtreme® corrosion proof	530 - 531, 542, 550 - 551
EMC	578
Central lever	603 - 605
LS-TYPE	618 - 619
IP68	632 - 635
panel supports:	page:
COB	652 - 653

inserts,
connection with dual spring
terminal per pole

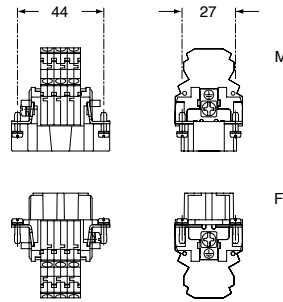


can be mated with CNE, CCE, CTSE, CSH inserts

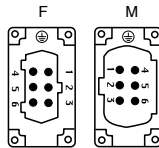
description	part No.
dual spring terminal per pole female inserts with female contacts male inserts with male contacts	CSSF 06 CSSM 06

The CSS series inserts can be inserted in flush mounted enclosures or in fixed / portable high enclosures.

- characteristics according to EN 61984:
16A 500V 6kV 3
16A 400/690V 6kV 2
- certified
- rated voltage according to UL/CSA: 600V
- insulation resistance: ≥ 10 GΩ
- ambient temperature limit: -40 °C ... +125 °C
- made of self-extinguishing thermoplastic resin UL 94V-0
- mechanical life: ≥ 500 cycles
- contact resistance: ≤ 3 mΩ
- for max. current load see the connector inserts derating diagram below; for more information see page 28

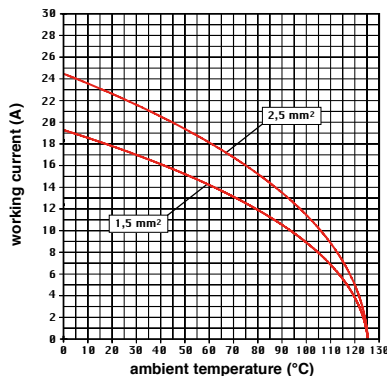


contacts side (front view)

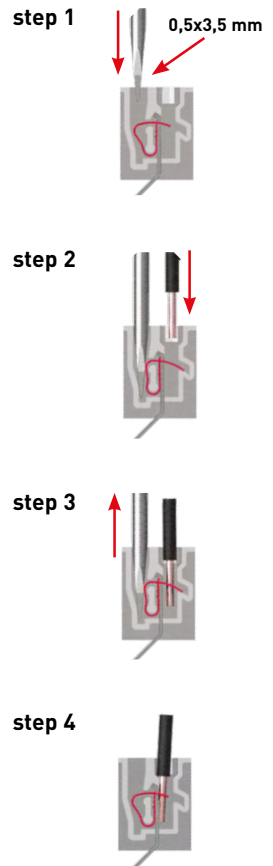


- inserts with plate for section conductors: 0,14 - 2,5 mm² - AWG 26 - 14
- conductors stripping length: 9...11 mm

CSS 06 poles connector inserts
Maximum current load derating diagram



Connection technology

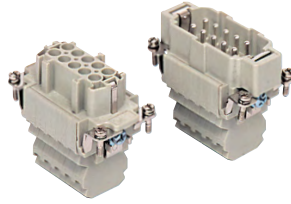


CSS

CSS 10 poles + ⊕ 16A - 500V

enclosures: size "57.27"	page:
C-TYPE IP65/IP66	393 - 401
C7 IP67, two levers	438
V-TYPE IP65/IP66, single lever	448 - 453
BIG hoods	468 - 469
T-TYPE IP65 insulating	482 - 483
T-TYPE / W IP66/IP69 insulating	490
HYGIENIC T-TYPE / H IP66/IP69	502
HYGIENIC T-TYPE / C IP66/IP69, -50 °C	507
W-TYPE for aggressive environments	522
E-Xtreme® corrosion proof	532 - 533, 543, 552 - 553
EMC	579
Central lever	606 - 608
LS-TYPE	620 - 621
IP68	636 - 639
panel supports: COB	page: 652 - 653

inserts,
connection with dual spring
terminal per pole



can be mated with CNE, CCE, CTSE, CSH inserts

description	part No.
-------------	----------

dual spring terminal per pole	CSSF 10
female inserts with female contacts	CSSM 10
male inserts with male contacts	

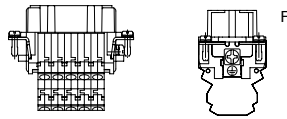
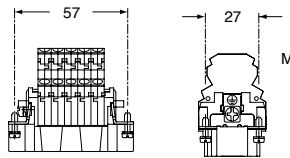
The CSS series inserts can be inserted in flush mounted enclosures or in fixed / portable high enclosures.

- characteristics according to EN 61984:

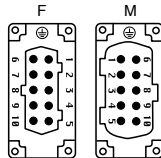
- 16A 500V 6kV 3
- 16A 400/690V 6kV 2

- certified

- rated voltage according to UL/CSA: 600V
- insulation resistance: $\geq 10 \text{ G}\Omega$
- ambient temperature limit: -40 °C ... +125 °C
- made of self-extinguishing thermoplastic resin UL 94V-0
- mechanical life: ≥ 500 cycles
- contact resistance: $\leq 3 \text{ m}\Omega$
- for max. current load see the connector inserts derating diagram below; for more information see page 28

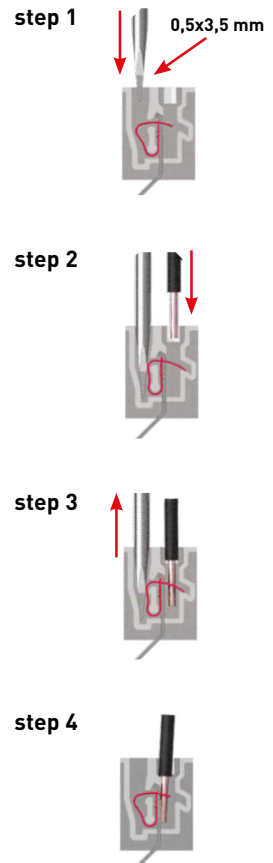


contacts side (front view)

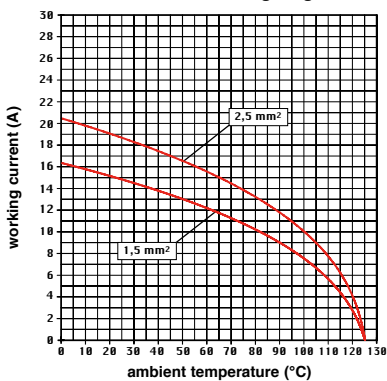


- inserts with plate for section conductors: 0,14 - 2,5 mm² - AWG 26 - 14
- conductors stripping length: 9...11 mm

Connection technology



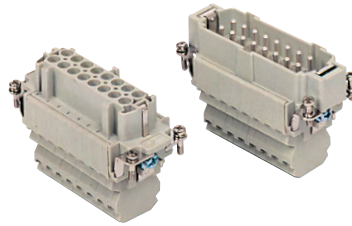
CSS 10 poles connector inserts
Maximum current load derating diagram



CSS 16 poles + ⊕ 16A - 500V

enclosures: size "77.27"	page:
C-TYPE IP65/IP66	402 - 411
C7 IP67, two levers	439 - 440
V-TYPE IP65/IP66, single lever	454 - 458
BIG hoods	470 - 471
T-TYPE IP65 insulating	484 - 485
T-TYPE / W IP66/IP69 insulating	491
HYGIENIC T-TYPE / H IP66/IP69	503
HYGIENIC T-TYPE / C IP66/IP69, -50 °C	508
W-TYPE for aggressive environments	523
E-Xtreme® corrosion proof	534 - 535, 544, 554 - 555
EMC	580
Central lever	609 - 611
LS-TYPE	622 - 623
IP68	640 - 643
panel supports:	page:
COB	652 - 653

inserts,
connection with dual spring
terminal per pole



can be mated with CNE, CCE, CTSE, CSH inserts

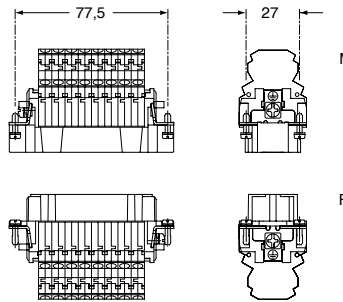
description	part No.
-------------	----------

dual spring terminal per pole
female inserts with female contacts
male inserts with male contacts

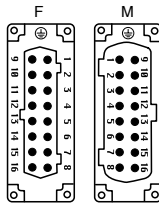
CSSF 16
CSSM 16

The CSS series inserts can be inserted in flush mounted enclosures or in fixed / portable high enclosures.

- characteristics according to EN 61984:
16A 500V 6kV 3
16A 400/690V 6kV 2
- certified
- rated voltage according to UL/CSA: 600V
- insulation resistance: ≥ 10 GΩ
- ambient temperature limit: -40 °C ... +125 °C
- made of self-extinguishing thermoplastic resin UL 94V-0
- mechanical life: ≥ 500 cycles
- contact resistance: ≤ 3 mΩ
- for max. current load see the connector inserts derating diagram below; for more information see page 28

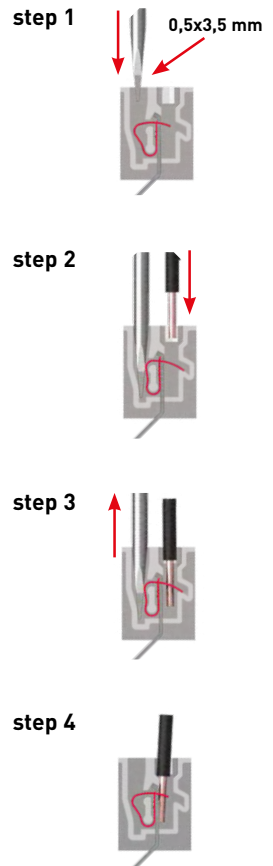


contacts side (front view)

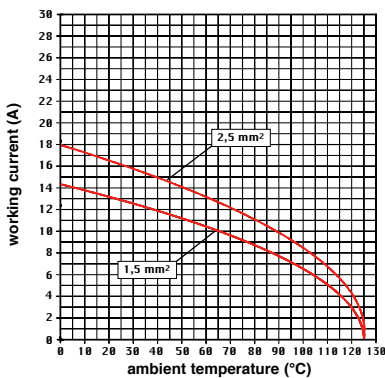


- inserts with plate for section conductors: 0,14 - 2,5 mm² - AWG 26 - 14
- conductors stripping length: 9...11 mm

Connection technology



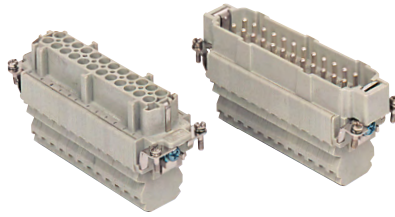
CSS 16 poles connector inserts
Maximum current load derating diagram



CSS 24 poles + ⊕ 16A - 500V

enclosures: size "104.27"	page:
C-TYPE IP65/IP66	412 - 423
C7 IP67, two levers	441 - 442
V-TYPE IP65/IP66, single lever	459 - 463
BIG hoods	472 - 473
T-TYPE IP65 insulating	486 - 487
T-TYPE / W IP66/IP69 insulating	492
HYGIENIC T-TYPE / H IP66/IP69	504
HYGIENIC T-TYPE / C IP66/IP69, -50 °C	509
W-TYPE for aggressive environments	524
E-Xtreme® corrosion proof	536 - 537, 545, 556 - 557
EMC	581
Central lever	612 - 614
LS-TYPE	624 - 625
IP68	644 - 647
panel supports: COB	page: 652 - 653

inserts,
connection with dual spring
terminal per pole



can be mated with CNE, CCE, CTSE, CSH inserts

description	part No.
-------------	----------

dual spring terminal per pole
female inserts with female contacts
male inserts with male contacts

CSSF 24
CSSM 24

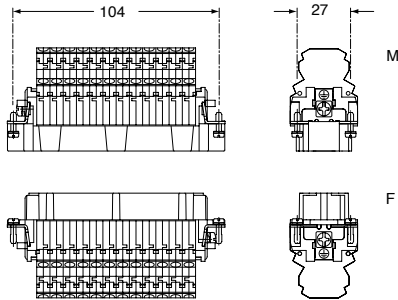
The CSS series inserts can be inserted in flush mounted enclosures or in fixed / portable high enclosures.

- characteristics according to EN 61984:

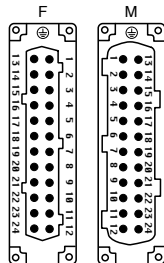
16A 500V 6kV 3
16A 400/690V 6kV 2

- certified

- rated voltage according to UL/CSA: 600V
- insulation resistance: $\geq 10 \text{ G}\Omega$
- ambient temperature limit: -40 °C ... +125 °C
- made of self-extinguishing thermoplastic resin UL 94V-0
- mechanical life: ≥ 500 cycles
- contact resistance: $\leq 3 \text{ m}\Omega$
- for max. current load see the connector inserts derating diagram below; for more information see page 28

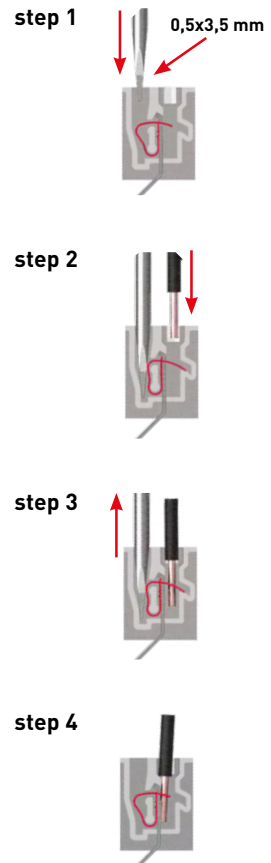


contacts side (front view)

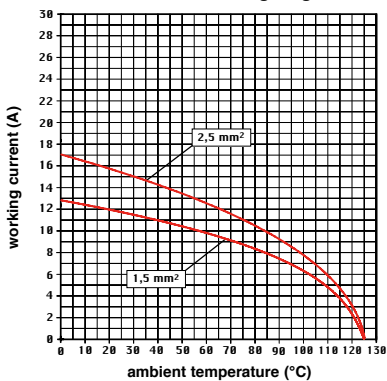


- inserts with plate for section conductors: 0,14 - 2,5 mm² - AWG 26 - 14
- conductors stripping length: 9...11 mm

Connection technology



CSS 24 poles connector inserts
Maximum current load derating diagram



Inserts

CSS 32 poles + ⊕ 16A - 500V

enclosures:
size "77.62"

page:

C-TYPE IP65/IP66

424 - 429

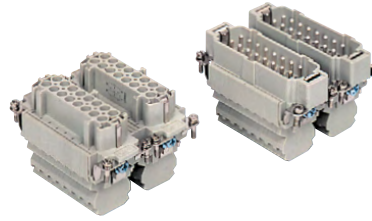
W-TYPE for aggressive environments

525

E-Xtreme® corrosion proof

546

inserts,
connection with dual spring
terminal per pole



can be mated with CNE, CCE, CTSE, CSH inserts

description	part No.	part No.
dual spring terminal per pole		
female inserts with female contacts, No. (1-16) and (17-32)	CSSF 16	CSSF 16 N
male inserts with male contacts, No. (1-16) and (17-32)	CSSM 16	CSSM 16 N

The CSS series inserts can be inserted in flush mounted enclosures or in fixed / portable high enclosures.

- characteristics according to EN 61984:

16A 500V 6kV 3

16A 400/690V 6kV 2

- certified

- rated voltage according to UL/CSA: 600V

- insulation resistance: $\geq 10 \text{ G}\Omega$

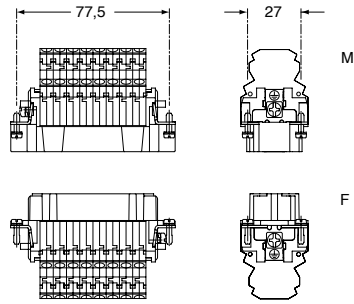
- ambient temperature limit: $-40 \text{ }^\circ\text{C} \dots +125 \text{ }^\circ\text{C}$

- made of self-extinguishing thermoplastic resin UL 94V-0

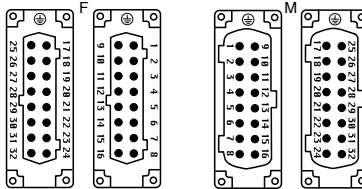
- mechanical life: ≥ 500 cycles

- contact resistance: $\leq 3 \text{ m}\Omega$

- for max. current load see the connector inserts derating diagram below; for more information see page 28



contacts side (front view)

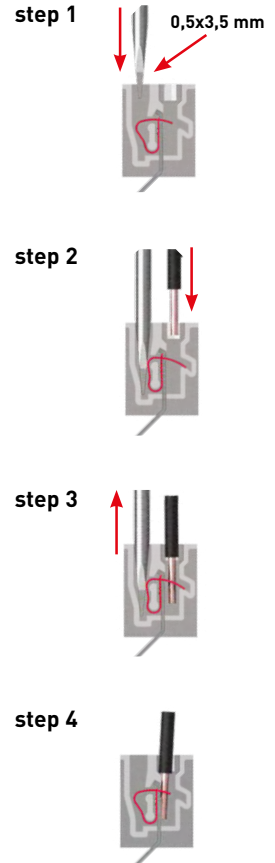


- inserts with plate for section conductors:

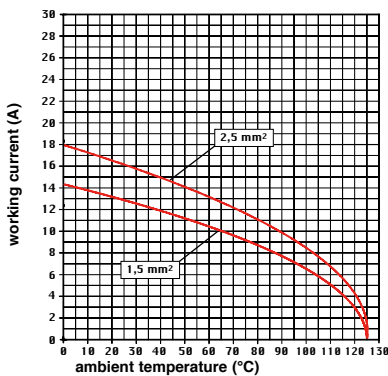
0,14 - 2,5 mm² - AWG 26 - 14

- conductors stripping length: 9...11 mm

Connection technology



CSS 32 poles connector inserts
Maximum current load derating diagram



CSS 48 poles + ⊕ 16A - 500V

enclosures:
size "104.62"

page:

C-TYPE IP65/IP66

430

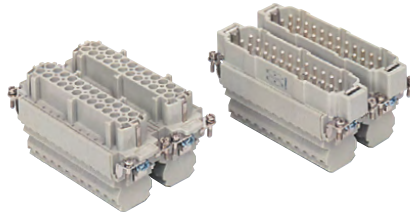
W-TYPE for aggressive environments

526

E-Xtreme® corrosion proof

547

inserts,
connection with dual spring
terminal per pole



can be mated with CNE, CCE, CTSE, CSH inserts

description

part No.

part No.

spring terminals with actuator button
female inserts with female contacts, No. (1-24) and (25-48)
male inserts with male contacts, No. (1-24) and (25-48)

CSSF 24
CSSM 24

CSSF 24 N
CSSM 24 N

The CSS series inserts can be inserted in flush mounted enclosures or in fixed / portable high enclosures.

- characteristics according to EN 61984:

16A 500V 6kV 3

16A 400/690V 6kV 2

- certified

- rated voltage according to UL/CSA: 600V

- insulation resistance: $\geq 10 \text{ G}\Omega$

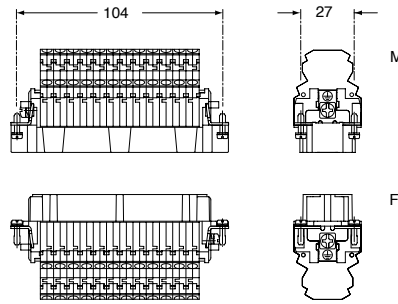
- ambient temperature limit: $-40 \text{ }^\circ\text{C} \dots +125 \text{ }^\circ\text{C}$

- made of self-extinguishing thermoplastic resin UL 94V-0

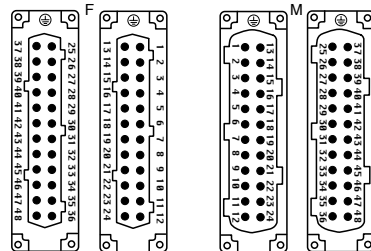
- mechanical life: ≥ 500 cycles

- contact resistance: $\leq 3 \text{ m}\Omega$

- for max. current load see the connector inserts derating diagram below; for more information see page 28



contacts side (front view)

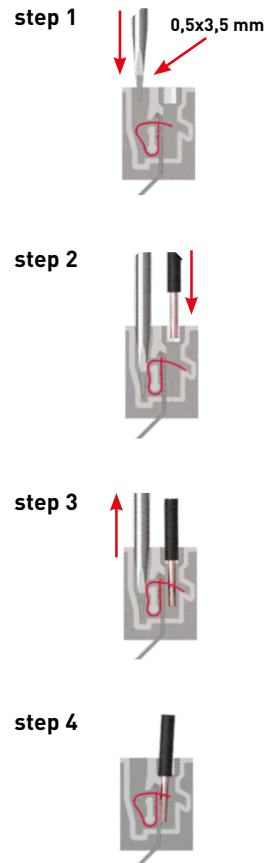


- inserts with plate for section conductors:

0,14 - 2,5 mm² - AWG 26 - 14

- conductors stripping length: 9...11 mm

Connection technology



CSS 48 poles connector inserts
Maximum current load derating diagram

