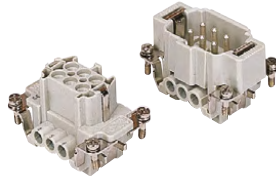


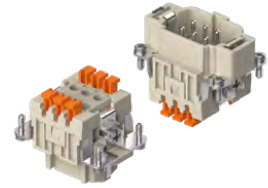
# CNE CSH-SQUICH® 6 poles + ⊕ 16A - 500V

enclosures: size "44.27"	page:
C-TYPE IP65/IP66	387 - 392
C7 IP67, single lever	436 - 437
V-TYPE IP65/IP66, single lever	444 - 447
BIG hoods	466 - 467
T-TYPE IP65 insulating	480 - 481
T-TYPE / W IP66/IP69 insulating	489
HYGIENIC T-TYPE / H IP66/IP69	501
HYGIENIC T-TYPE / C IP66/IP69, -50 °C	506
W-TYPE for aggressive environments	521
E-Xtreme® corrosion proof	530 - 531, 542, 550 - 551
EMC	578
Central lever	603 - 605
LS-TYPE	618 - 619
IP68	632 - 635
panel supports:	page:
COB	652 - 653

## inserts, screw terminal connections



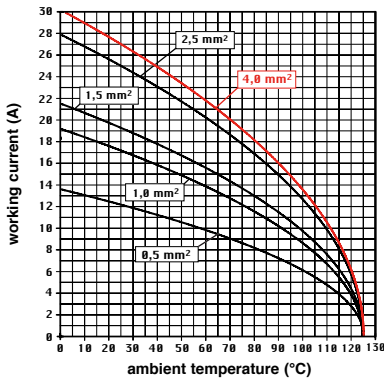
## inserts, spring terminal connections without tools



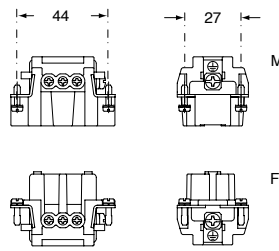
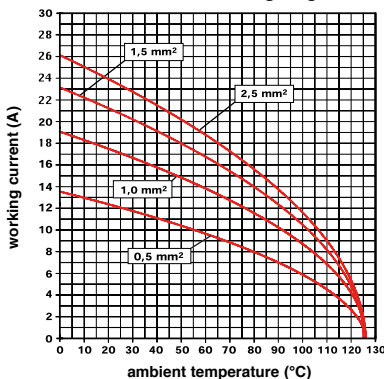
description	part No.	part No.
indirect, with plate <sup>1)</sup> female inserts with female contacts male inserts with male contacts	<b>CNEF 06 T</b> <b>CNEM 06 T</b>	
direct, without plate <sup>2)</sup> female inserts with female contacts male inserts with male contacts	<b>CNEF 06 TX</b> <b>CNEM 06 TX</b>	
spring terminals with actuator button female inserts with female contacts male inserts with male contacts		<b>CSHF 06</b> <b>CSHM 06</b>

- characteristics according to EN 61984:  
**16A 500V 6kV 3**  
**16A 400/690V 6kV 2**
- cULus (UL for USA and Canada),
- certified
- rated voltage according to UL/CSA: 600V
- insulation resistance: ≥ 10 GΩ
- ambient temperature limit: -40 °C ... +125 °C
- made of self-extinguishing thermoplastic resin UL 94V-0
- mechanical life: ≥ 500 cycles
- contact resistance: ≤ 1 mΩ (CNE) - ≤ 3 mΩ (CSH)
- for max. current load see the connector inserts derating diagrams below; for more information see page 28

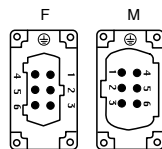
**CNE 06 poles connector inserts**  
Maximum current load derating diagram



**CSH 06 poles connector inserts**  
Maximum current load derating diagram



contacts side (front view)

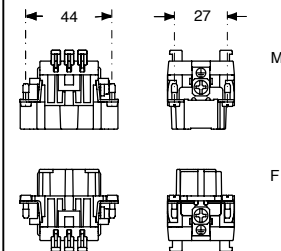


- inserts with plate for section conductors:  
0,5 - 4 mm² - AWG 20 - 12
- inserts without plate for section conductors:  
0,25 - 2,5 mm² - AWG 24 - 14
- conductors stripping length: 7 mm
- terminal screw torque: 0,5 Nm (4.4 lb.in), for more information see page 20 and 21

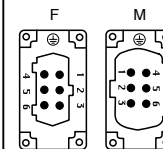
<sup>1)</sup> for unprepared conductors



<sup>2)</sup> for conductors with end sleeve ferrule



contacts side (front view)



- inserts for connectors with the following sections:  
0,14 - 2,5 mm² - AWG 26 - 14
- conductors stripping length: 9...11 mm

### SQUICH®-spring connection technology WIRING

- Deeply insert a stripped conductor into a round terminal.
- Push the actuator button to close the terminal.

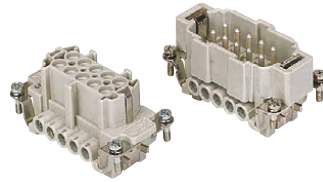
### RE-OPENING

- Insert a 0,5 x 3,5 mm flat blade screwdriver in the actuator button side window and pull it up by levering down.

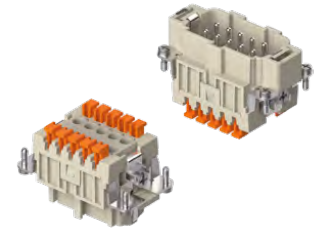
# CNE CSH-SQUICH® 10 poles + ⊕ 16A - 500V

<b>enclosures:</b> size "57.27"	<b>page:</b>
C-TYPE IP65/IP66	393 - 401
C7 IP67, two levers	438
V-TYPE IP65/IP66, single lever	448 - 453
BIG hoods	468 - 469
T-TYPE IP65 insulating	482 - 483
T-TYPE / W IP66/IP69 insulating	490
HYGIENIC T-TYPE / H IP66/IP69	502
HYGIENIC T-TYPE / C IP66/IP69, -50 °C	507
W-TYPE for aggressive environments	522
E-Xtreme® corrosion proof	532 - 533, 543, 552 - 553
EMC	579
Central lever	606 - 608
LS-TYPE	620 - 621
IP68	636 - 639
<b>panel supports:</b> COB	<b>page:</b> 652 - 653

**inserts,  
screw terminal connections**



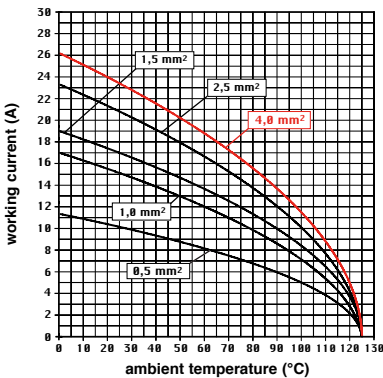
**inserts,  
spring terminal connections without tools**



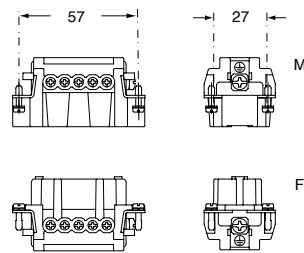
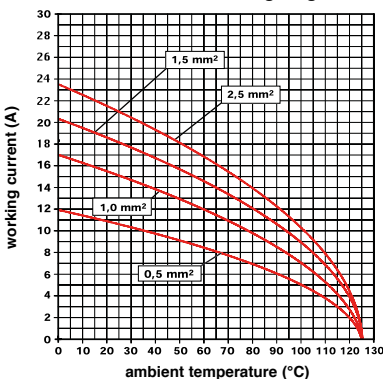
description	part No.	part No.
indirect, with plate <sup>1)</sup> female inserts with female contacts male inserts with male contacts	<b>CNEF 10 T</b> <b>CNEM 10 T</b>	
direct, without plate <sup>2)</sup> female inserts with female contacts male inserts with male contacts	<b>CNEF 10 TX</b> <b>CNEM 10 TX</b>	
spring terminals with actuator button female inserts with female contacts male inserts with male contacts		<b>CSHF 10</b> <b>CSHM 10</b>

- characteristics according to EN 61984:  
**16A 500V 6kV 3**  
**16A 400/690V 6kV 2**
- (UL for USA and Canada),
- certified
- rated voltage according to UL/CSA: 600V
- insulation resistance: ≥ 10 GΩ
- ambient temperature limit: -40 °C ... +125 °C
- made of self-extinguishing thermoplastic resin UL 94V-0
- mechanical life: ≥ 500 cycles
- contact resistance: ≤ 1 mΩ (CNE) - ≤ 3 mΩ (CSH)
- for max. current load see the connector inserts derating diagrams below; for more information see page 28

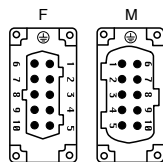
**CNE 10 poles connector inserts**  
Maximum current load derating diagram



**CSH 10 poles connector inserts**  
Maximum current load derating diagram



contacts side (front view)

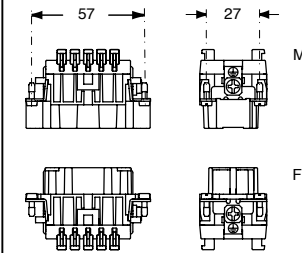


- inserts with plate for section conductors:  
0,5 - 4 mm<sup>2</sup> - AWG 20 - 12
- inserts without plate for section conductors:  
0,25 - 2,5 mm<sup>2</sup> - AWG 24 - 14
- conductors stripping length: 7 mm
- terminal screw torque: 0,5 Nm (4.4 lb.in), for more information see page 20 and 21

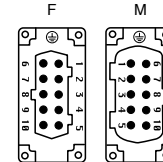
<sup>1)</sup> for unprepared conductors



<sup>2)</sup> for conductors with end sleeve ferrule

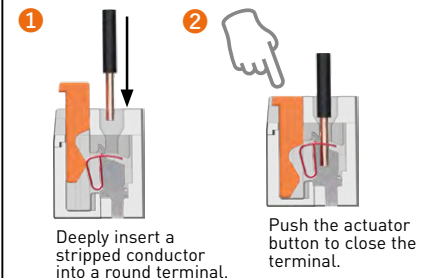


contacts side (front view)

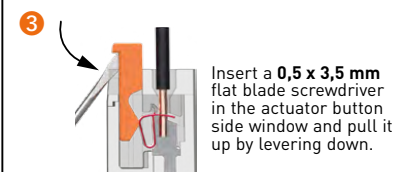


- inserts for connectors with the following sections:  
0,14 - 2,5 mm<sup>2</sup> - AWG 26 - 14
- conductors stripping length: 9...11 mm

**SQUICH®-spring connection technology**  
**WIRING**



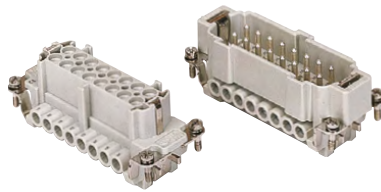
**RE-OPENING**



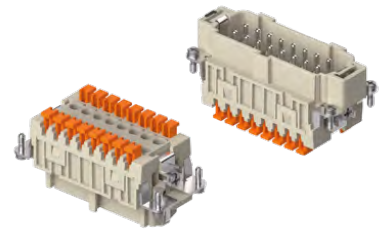
# CNE CSH-SQUICH® 16 poles + ⚡ 16A - 500V

enclosures: size "77.27"	page:
C-TYPE IP65/IP66	402 - 411
C7 IP67, two levers	439 - 440
V-TYPE IP65/IP66, single lever	454 - 458
BIG hoods	470 - 471
T-TYPE IP65 insulating	484 - 485
T-TYPE / W IP66/IP69 insulating	491
HYGIENIC T-TYPE / H IP66/IP69	503
HYGIENIC T-TYPE / C IP66/IP69, -50 °C	508
W-TYPE for aggressive environments	523
E-Xtreme® corrosion proof	534 - 535, 544, 554 - 555
EMC	580
Central lever	609 - 611
LS-TYPE	622 - 623
IP68	640 - 643
panel supports:	page:
COB	652 - 653

## inserts, screw terminal connections



## inserts, spring terminal connections without tools



description	part No.	part No.
-------------	----------	----------

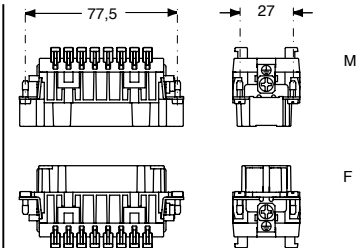
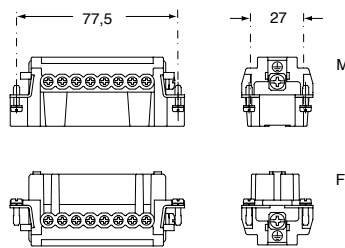
indirect, with plate <sup>1)</sup>  
 female inserts with female contacts **CNEF 16 T**  
 male inserts with male contacts **CNEM 16 T**

direct, without plate <sup>2)</sup>  
 female inserts with female contacts **CNEF 16 TX**  
 male inserts with male contacts **CNEM 16 TX**

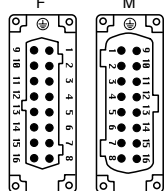
spring terminals with actuator button  
 female inserts with female contacts  
 male inserts with male contacts

**CSHF 16**  
**CSHM 16**

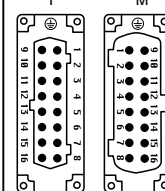
- characteristics according to EN 61984:  
**16A 500V 6kV 3**  
**16A 400/690V 6kV 2**
- (UL for USA and Canada), (IEC certified)
- rated voltage according to UL/CSA: 600V
- insulation resistance: ≥ 10 GΩ
- ambient temperature limit: -40 °C ... +125 °C
- made of self-extinguishing thermoplastic resin UL 94V-0
- mechanical life: ≥ 500 cycles
- contact resistance: ≤ 1 mΩ (CNE) - ≤ 3 mΩ (CSH)
- for max. current load see the connector inserts derating diagrams below; for more information see page 28



contacts side (front view)



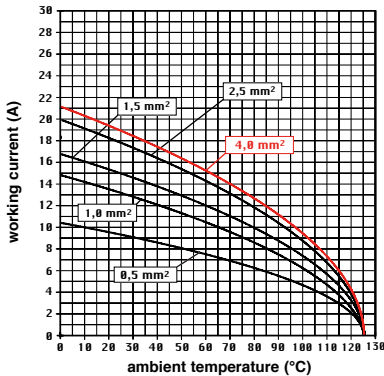
contacts side (front view)



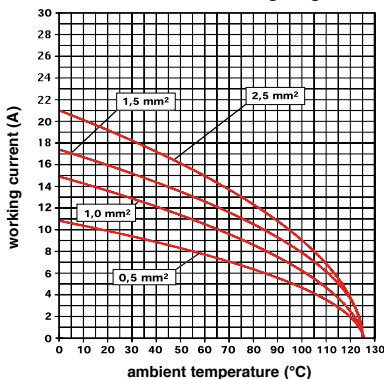
- inserts with plate for section conductors:  
 0,5 - 4 mm<sup>2</sup> - AWG 20 - 12
- inserts without plate for section conductors:  
 0,25 - 2,5 mm<sup>2</sup> - AWG 24 - 14
- conductors stripping length: 7 mm
- terminal screw torque: 0,5 Nm (4.4 lb.in), for more information see page 20 and 21

- inserts for connectors with the following sections:  
 0,14 - 2,5 mm<sup>2</sup> - AWG 26 - 14
- conductors stripping length: 9...11 mm

**CNE 16 poles connector inserts**  
 Maximum current load derating diagram



**CSH 16 poles connector inserts**  
 Maximum current load derating diagram



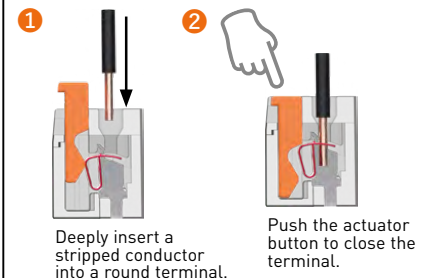
<sup>1)</sup> for unprepared conductors



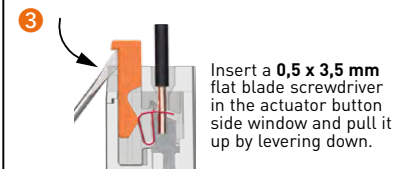
<sup>2)</sup> for conductors with end sleeve ferrule



### SQUICH®-spring connection technology WIRING



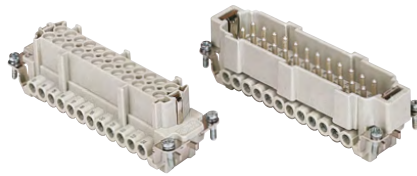
### RE-OPENING



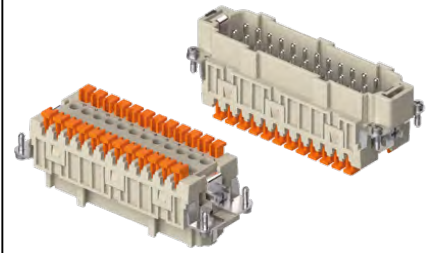
# CNE CSH-SQUICH® 24 poles + ⊕ 16A - 500V

<b>enclosures:</b> size "104.27"	<b>page:</b>
C-TYPE IP65/IP66	412 - 423
C7 IP67, two levers	441 - 442
V-TYPE IP65/IP66, single lever	459 - 463
BIG hoods	472 - 473
T-TYPE IP65 insulating	486 - 487
T-TYPE / W IP66/IP69 insulating	492
HYGIENIC T-TYPE / H IP66/IP69	504
HYGIENIC T-TYPE / C IP66/IP69, -50 °C	509
W-TYPE for aggressive environments	524
E-Xtreme® corrosion proof	536 - 537, 545, 556 - 557
EMC	581
Central lever	612 - 614
LS-TYPE	624 - 625
IP68	644 - 647
<b>panel supports:</b> COB	<b>page:</b> 652 - 653

**inserts,  
screw terminal connections**



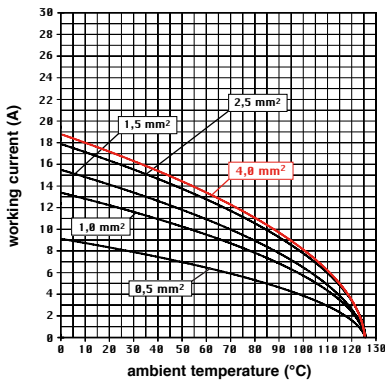
**inserts,  
spring terminal connections without tools**



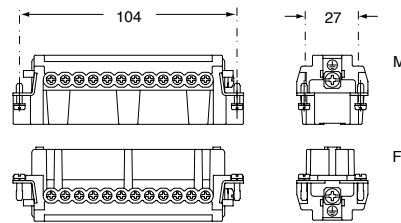
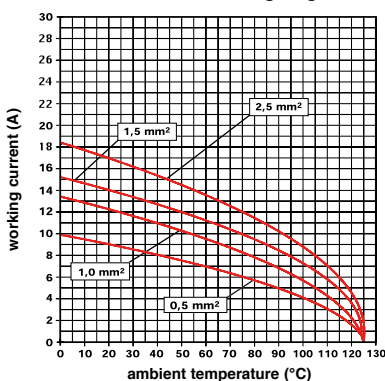
description	part No.	part No.
indirect, with plate <sup>1)</sup> female inserts with female contacts male inserts with male contacts	<b>CNEF 24 T</b> <b>CNEM 24 T</b>	
direct, without plate <sup>2)</sup> female inserts with female contacts male inserts with male contacts	<b>CNEF 24 TX</b> <b>CNEM 24 TX</b>	
spring terminals with actuator button female inserts with female contacts male inserts with male contacts		<b>CSHF 24</b> <b>CSHM 24</b>

- characteristics according to EN 61984:  
**16A 500V 6kV 3**  
**16A 400/690V 6kV 2**
- (UL for USA and Canada), certified
- rated voltage according to UL/CSA: 600V
- insulation resistance: ≥ 10 GΩ
- ambient temperature limit: -40 °C ... +125 °C
- made of self-extinguishing thermoplastic resin UL 94V-0
- mechanical life: ≥ 500 cycles
- contact resistance: ≤ 1 mΩ (CNE) - ≤ 3 mΩ (CSH)
- for max. current load see the connector inserts derating diagrams below; for more information see page 28

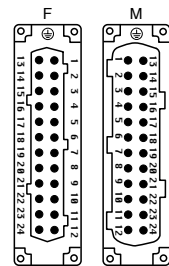
**CNE 24 poles connector inserts**  
Maximum current load derating diagram



**CSH 24 poles connector inserts**  
Maximum current load derating diagram



contacts side (front view)



- inserts with plate for section conductors: 0,5 - 4 mm<sup>2</sup> - AWG 20 - 12
- inserts without plate for section conductors: 0,25 - 2,5 mm<sup>2</sup> - AWG 24 - 14
- conductors stripping length: 7 mm
- terminal screw torque: 0,5 Nm (4.4 lb.in), for more information see page 20 and 21

<sup>1)</sup> for unprepared conductors

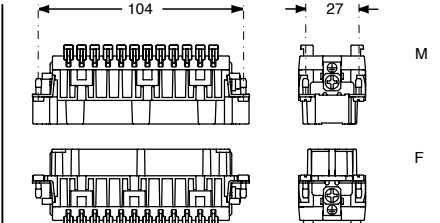


CNE ...

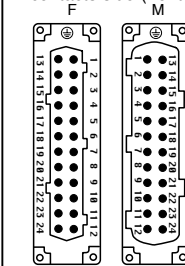
<sup>2)</sup> for conductors with end sleeve ferrule



CNE ... X



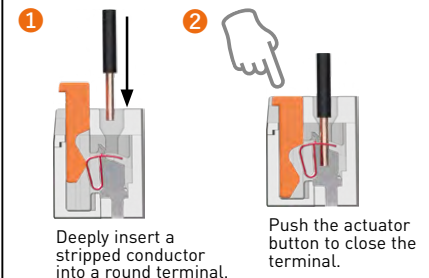
contacts side (front view)



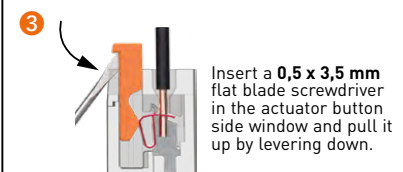
- inserts for connectors with the following sections: 0,14 - 2,5 mm<sup>2</sup> - AWG 26 - 14
- conductors stripping length: 9...11 mm

**SQUICH®-spring connection technology**

**WIRING**



**RE-OPENING**



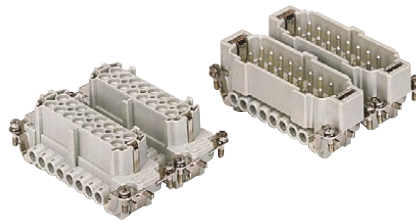


# CNE CSH-SQUICH® 32 poles + ⊕ 16A - 500V

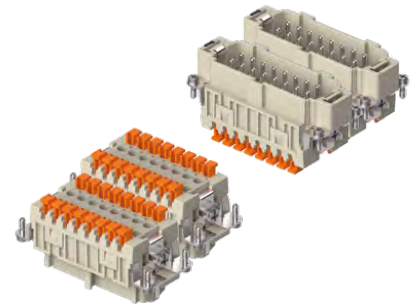
enclosures:  
size "77.62" page:

C-TYPE IP65/IP66 424 - 429  
W-TYPE for aggressive environments 525  
E-Xtreme® corrosion proof 546

inserts,  
screw terminal connections

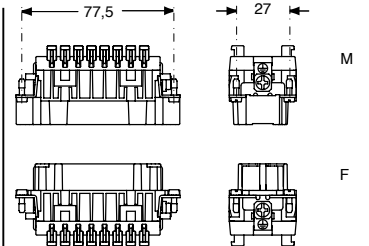
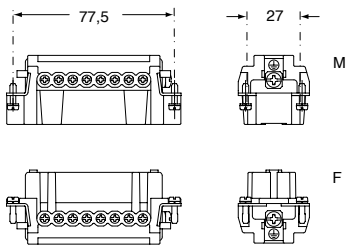


inserts,  
spring terminal connections without tools

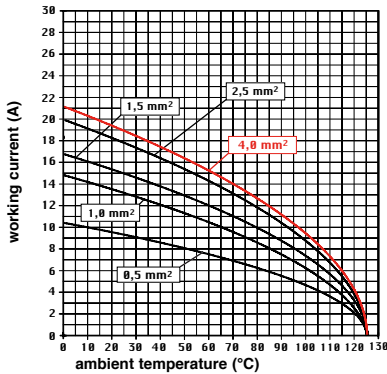


description	part No.	part No.	part No.	part No.
indirect, with plate <sup>1)</sup> female inserts, No. (1-16) and (17-32) male inserts, No. (1-16) and (17-32)	<b>CNEF 16 T</b> <b>CNEM 16 T</b>	<b>CNEF 16 TN</b> <b>CNEM 16 TN</b>		
direct, without plate <sup>2)</sup> female inserts, No. (1-16) and (17-32) male inserts, No. (1-16) and (17-32)	<b>CNEF 16 TX</b> <b>CNEM 16 TX</b>	<b>CNEF 16 TXN</b> <b>CNEM 16 TXN</b>		
spring terminals with actuator button female inserts with female contacts, No. (1-16) and (17-32) male inserts with male contacts, No. (1-16) and (17-32)			<b>CSHF 16</b> <b>CSHM 16</b>	<b>CSHF 16 N</b> <b>CSHM 16 N</b>

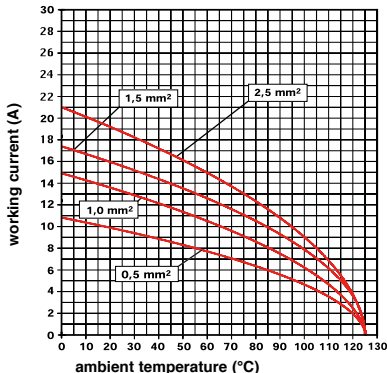
- characteristics according to EN 61984:  
**16A 500V 6kV 3**  
**16A 400/690V 6kV 2**
- certified
- rated voltage according to UL/CSA: 600V
- insulation resistance: ≥ 10 GΩ
- ambient temperature limit: -40 °C ... +125 °C
- made of self-extinguishing thermoplastic resin UL 94V-0
- mechanical life: ≥ 500 cycles
- contact resistance: ≤ 1 mΩ (CNE) - ≤ 3 mΩ (CSH)
- for max. current load see the connector inserts derating diagrams below; for more information see page 28



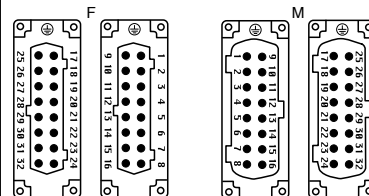
**CNE 32 poles connector inserts**  
Maximum current load derating diagram



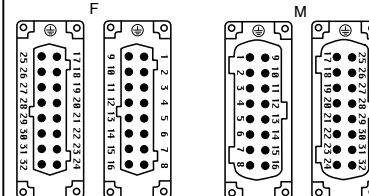
**CSH 32 poles connector inserts**  
Maximum current load derating diagram



contacts side (front view)



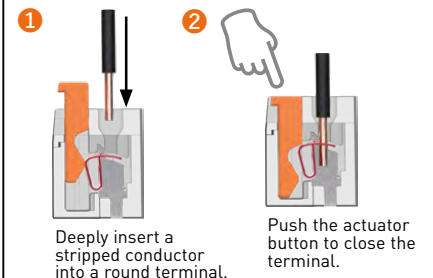
contacts side (front view)



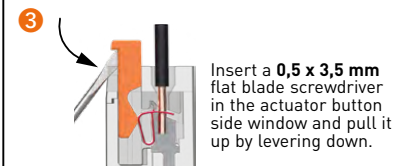
- inserts with plate for section conductors:  
0,5 - 4 mm<sup>2</sup> - AWG 20 - 12
- inserts without plate for section conductors:  
0,25 - 2,5 mm<sup>2</sup> - AWG 24 - 14
- conductors stripping length: 7 mm
- terminal screw torque: 0,5 Nm (4.4 lb.in), for more information see page 20 and 21

- inserts for connectors with the following sections:  
0,14 - 2,5 mm<sup>2</sup> - AWG 26 - 14
- conductors stripping length: 9...11 mm

**SQUICH®-spring connection technology**  
**WIRING**



**RE-OPENING**



<sup>1)</sup> for unprepared conductors



<sup>2)</sup> for conductors with end sleeve ferrule



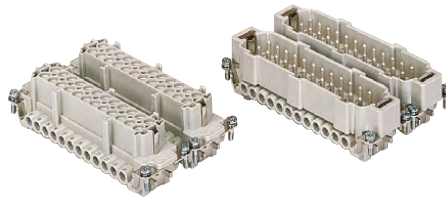
# CNE CSH-SQUICH® 48 poles + ⊕ 16A - 500V

enclosures:  
size "104.62"

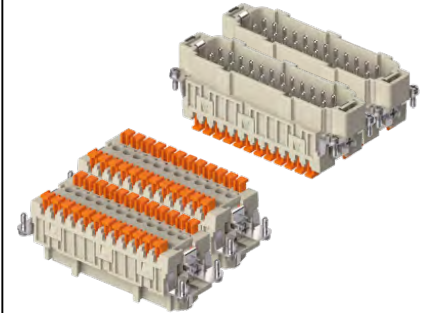
page:

C-TYPE IP65/IP66	430
W-TYPE for aggressive environments	526
E-Xtreme® corrosion proof	547

inserts,  
screw terminal connections



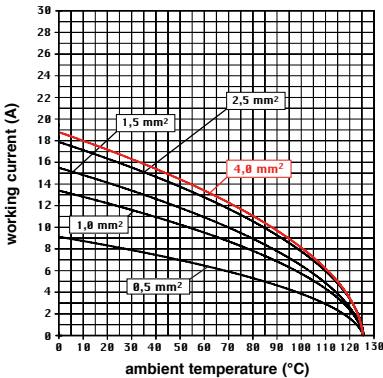
inserts,  
spring terminal connections without tools



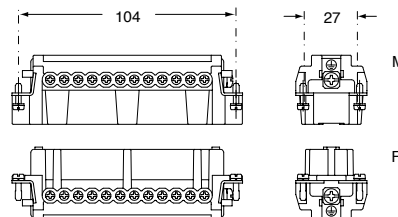
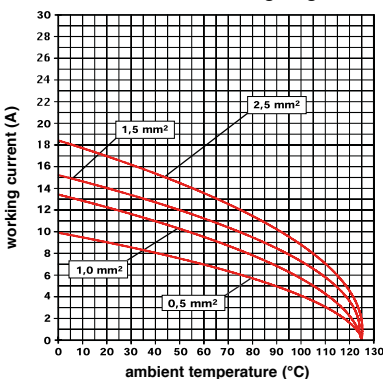
description	part No.	part No.	part No.	part No.
indirect, with plate <sup>1)</sup> female inserts, No. (1-24) and (25-48) male inserts, No. (1-24) and (25-48)	<b>CNEF 24 T</b> <b>CNEM 24 T</b>	<b>CNEF 24 TN</b> <b>CNEM 24 TN</b>		
direct, without plate <sup>2)</sup> female inserts, No. (1-24) and (25-48) male inserts, No. (1-24) and (25-48)	<b>CNEF 24 TX</b> <b>CNEM 24 TX</b>	<b>CNEF 24 TXN</b> <b>CNEM 24 TXN</b>		
spring terminals with actuator button female inserts with female contacts, No. (1-24) and (25-48) male inserts with male contacts, No. (1-24) and (25-48)			<b>CSHF 24</b> <b>CSHM 24</b>	<b>CSHF 24 N</b> <b>CSHM 24 N</b>

- characteristics according to EN 61984:  
**16A 500V 6kV 3**  
**16A 400/690V 6kV 2**
- (UL for USA and Canada),
- certified
- rated voltage according to UL/CSA: 600V
- insulation resistance:  $\geq 10 \text{ G}\Omega$
- ambient temperature limit:  $-40 \text{ }^\circ\text{C} \dots +125 \text{ }^\circ\text{C}$
- made of self-extinguishing thermoplastic resin UL 94V-0
- mechanical life:  $\geq 500$  cycles
- contact resistance:  $\leq 1 \text{ m}\Omega$  (CNE) -  $\leq 3 \text{ m}\Omega$  (CSH)
- for max. current load see the connector inserts derating diagrams below; for more information see page 28

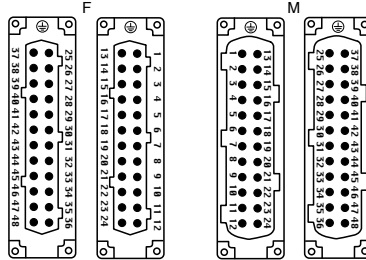
**CNE 48 poles connector inserts**  
Maximum current load derating diagram



**CSH 48 poles connector inserts**  
Maximum current load derating diagram



contacts side (front view)



- inserts with plate for section conductors: 0,5 - 4 mm<sup>2</sup> - AWG 20 - 12
- inserts without plate for section conductors: 0,25 - 2,5 mm<sup>2</sup> - AWG 24 - 14
- conductors stripping length: 7 mm
- terminal screw torque: 0,5 Nm (4,4 lb.in), for more information see page 20 and 21

<sup>1)</sup> for unprepared conductors

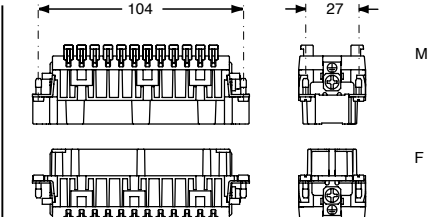


CNE ...

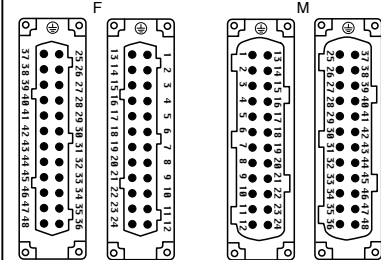
<sup>2)</sup> for conductors with end sleeve ferrule



CNE ... X



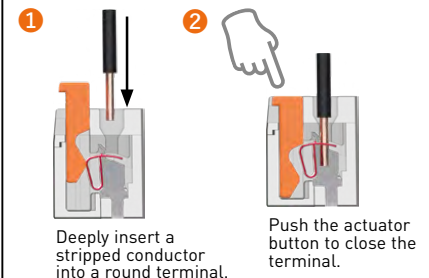
contacts side (front view)



- inserts for connectors with the following sections: 0,14 - 2,5 mm<sup>2</sup> - AWG 26 - 14
- conductors stripping length: 9...11 mm

**SQUICH®-spring connection technology**

**WIRING**



**RE-OPENING**

