

CX 01 T

enclosures: size "49.16"	page:
IL-BRID	374 - 377, 382
CZ7 IP67, single lever	384
W-TYPE for aggressive environments	519
E-Xtreme® corrosion proof	540
EMC	576
panel supports: COB + adaptor	page: 652 - 654

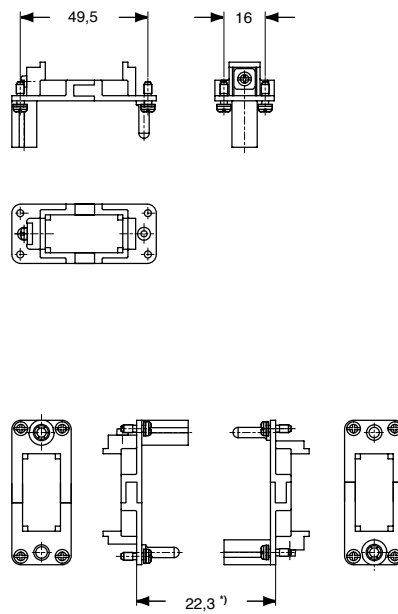
frames for modular units



description	part No.
-------------	----------

for CZ enclosures	CX 01 T
-------------------	---------

- die-cast zinc alloy frames
- protective earth (PE)
- polarisation on frames
- coding pins **CR..CX**



*) distance for electric contacts: max 24 mm
distance for pneumatic contacts: max 23,5 mm

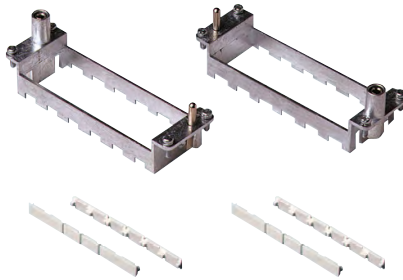
- small earth terminal for cables from 1-2,5 mm²,
AWG 18-14

MIXO INSERTS

CX 02 TM/TF, CX 03 TM/TF, CX 04 TM/TF, CX 06 TM/TF

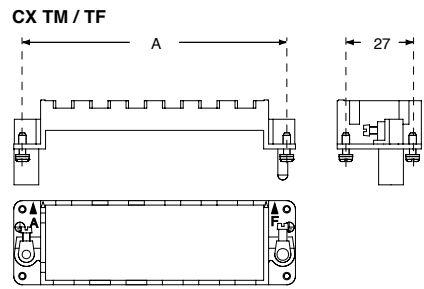
enclosures:	page:
C-TYPE IP65/IP66	387 - 430
C7 IP67	436 - 442
V-TYPE IP65/IP66	444 - 463
BIG hoods	466 - 473
T-TYPE IP65 insulating	480 - 487
T-TYPE / W IP66/IP69 insulating	489 - 492
HYGIENIC T-TYPE / H IP66/IP69	501 - 504
HYGIENIC T-TYPE / C IP66/IP69, -50 °C	506 - 509
W-TYPE for aggressive environments	521 - 526
E-Xtreme® corrosion proof	530-537, 542-547, 550-557
EMC	578 - 581
Central lever	603 - 614
LS-TYPE	618 - 625
IP68	632 - 647
panel supports:	page:
COB	652 - 653

frames for modular units with lock-in tab (included)



description	part No.
frames for modular units with lock-in tab included	
for 2 modular units - for housing size 44.27	CX 02 TM CX 02 TF
for 3 modular units - for housing size 57.27	CX 03 TM CX 03 TF
for 4 modular units - for housing size 77.27 and 77.62	CX 04 TM CX 04 TF
for 6 modular units - for housing size 104.27 and 104.62	CX 06 TM CX 06 TF

- die-cast zinc alloy frames
- protective earth (PE)
- possibility of mounting female and male modular units on the same frame
- frames supplied with lock-in tab to attach units
- polarisation on frames
- coding pins **CR..CX**
- for spare lock-in tab **CX CFM** see SPARE SPARTS catalogue

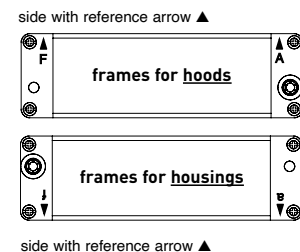


part No.	A (mm)	for housings size
CX 02 TM / TF	44	44.27
CX 03 TM / TF	57	57.27
CX 04 TM / TF	77,5	77.27 and 77.62
CX 06 TM / TF	104	104.27 and 104.62

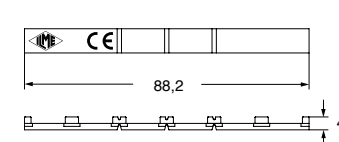
Earth terminal
 - large: for cables from 4-6 mm², AWG 12-10
 - small: for cables from 1-2,5 mm², AWG 18-14

In order to accomodate larger PE conductor cross-sectional area, use CGT PE adapters, see page 319.

position of modules (contact side view)

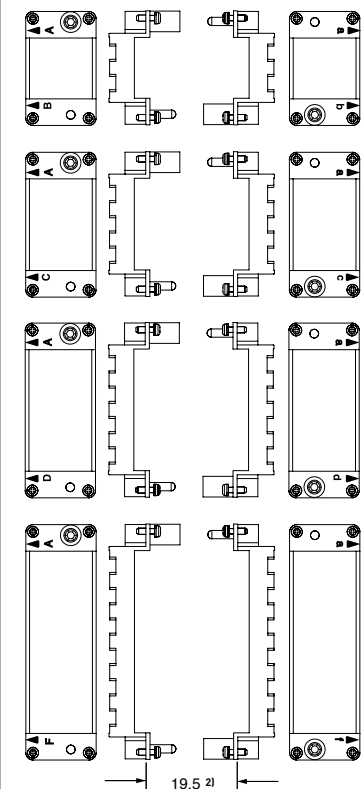


CX CFM (lock-in tab)



Polarisation of frames with relative identification letters and couplings

frame for hoods ¹⁾ frames for housings ¹⁾



- 1) Warning:**
 The module support frames are marked:
 - FOR HOODS: **upper-case A-B, A-C, A-D and A-F**
 - FOR HOUSINGS: **lower-case a-b, a-c, a-d and a-f**

Positioning the modules in the frames according to the respective letters is ensuring the specular assembly of modules, for which the hood will be coupled correctly to the housing.

- 2) Distance for:**
 - electric and fibre optic contacts: max 21 mm
 - pneumatic contacts: max 20,5 mm

MIXO INSERTS

CGT 6.0 – CGT 10 – CGT 16 – CGT 25

PE terminal adapters for MIXO frames

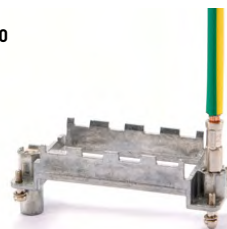
- **PE terminal adapter CGT 6.0** made of nickel plated brass that allows to connect by crimping a 6 mm² / 10 AWG flexible copper conductor **to the small PE terminal** (2,5 mm² / 14 AWG) of a MIXO frame, in case the connector needs a second PE line sized 6 mm²/10 AWG when the large PE terminal (6 mm²/10 AWG) of the MIXO frame is already occupied by a large size PE conductor, by using the existing PE terminal adapter **CGT 16**, or the new ones for the large PE terminal, **CGT 10 or CGT 25**.

CGT 6.0



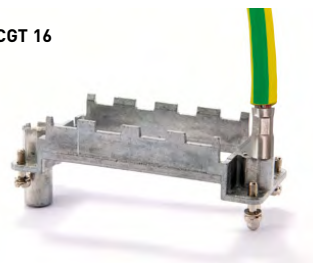
- **PE terminal adapters CGT 10 and CGT 25** made of nickel plated brass that allow to connect by crimping respectively a 10 mm² / 8 AWG or a 25 mm² / 4 AWG flexible copper conductor **to the large PE terminal** (6 mm²/10 AWG) of a MIXO frame.

CGT 10



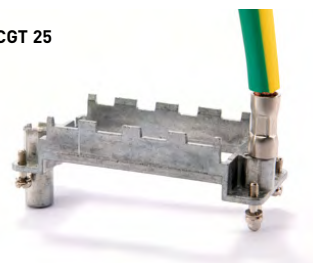
- They are offered in addition to the existing PE terminal adapter **CGT 16** for 16 mm² / 6 AWG protective earth conductor – introduced with MIXO 100A modules **CX 02 G and CX 01 G** – to give more flexibility for the combination of MIXO 100A and 70A high power modules with **multi-core cables**, that have the PE conductor of the same size of the phase conductors.

CGT 16



- Crimping is achieved by using the already available manual hydraulic crimping tool **CPPZ C** (Cembre HT 45) with hexagonal crimping dies **CGD 10 C** (for **CGT 10** with 10 mm² / 8 AWG and for **CGT 6.0** with 6 mm² / 10 AWG flexible copper conductors) and **CGD 25 C** (for **CGT 25** with 25 mm² / 4 AWG flexible copper conductors).

CGT 25

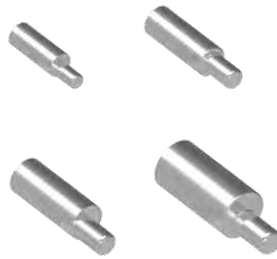


CGT 6.0 - CGT 10 - CGT 16 - CGT 25

The modular inserts must be installed in suitable frames, which are then mounted in traditional enclosures or in COB panel supports.

frames for modular units page:
316 - 317

PE terminal adapter



headless screw M4X6

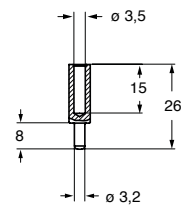


description	part No.	part No.
PE wire terminal adapter 6 mm ² (10 AWG)	CGT 6.0	
PE wire terminal adapter 10 mm ² (8 AWG)	CGT 10	
PE wire terminal adapter 16 mm ² (6 AWG)	CGT 16	
PE wire terminal adapter 25 mm ² (4 AWG)	CGT 25	
headless screw M4X6, stainless steel, kit of 10 pcs. (see point 5 below)		CR VGM4

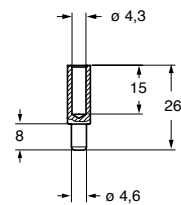
How to use the PE terminal adapter

- 1) Strip 15 mm of flexible PE wire.
- 2) Crimp the cable on the CGT adapter by using the CPPZ C pliers with the dies as follows:
 - **CGD 10 C** for 6 mm² and 10 mm²
 - **CGD 16 C** for 16 mm²
 - **CGD 25 C** for 25 mm²
- 3) Fix the adapter tip in the larger earth terminal (6 mm²) for CGT 10, CGT 16, CGT 25 or in the smaller earth terminal (2,5 mm²) for CGT 6.0 of frames CX...TM/TF.
- 4) To be used with bulkhead mounting housings or high construction hoods.
- 5) Cannot be used with T-TYPE surface mounting housings and horizontal cable outlet hoods. For the use within bulkhead housings and vertical entry hoods it is needed to replace the M4 screw of the 6 mm² PE contact of the frame with the headless screw **CR VGM4**.

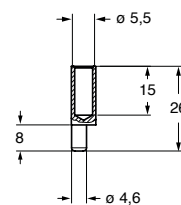
CGT 6.0



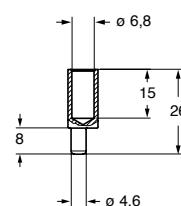
CGT 10



CGT 16



CGT 25



cURus pending

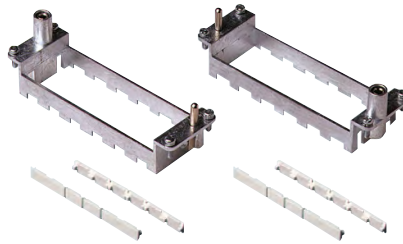
MIXO INSERTS

RX 02 TM/TF, RX 03 TM/TF, RX 04 TM/TF, RX 06 TM/TF HNM (High Number of Matings)

enclosures size:		page:
"44.27"	HNM	592 - 593
	C-TYPE IP65/IP66, single lever	387 - 392
	V-TYPE IP65/IP66, single lever	444 - 447
	E-Xtreme® corrosion proof	530-531, 542, 550-551
"57.27"	HNM	594 - 595
	C-TYPE IP65/IP66, single lever	393 - 401
	V-TYPE IP65/IP66, single lever	448 - 453
	E-Xtreme® corrosion proof	532 - 533, 543, 552 - 553
"77.27"	HNM	596 - 597
	C-TYPE IP65/IP66, single lever	402 - 411
	V-TYPE IP65/IP66, single lever	454 - 458
	E-Xtreme® corrosion proof	534 - 535, 544, 554 - 555
"104.27"	HNM	598 - 599
	C-TYPE IP65/IP66, single lever	412 - 423
	V-TYPE IP65/IP66, single lever	459 - 463
	E-Xtreme® corrosion proof	536 - 537, 545, 556 - 557
"77.62"	C-TYPE IP65/IP66, single lever	424 - 429
	E-Xtreme® corrosion proof	546
"104.62"	C-TYPE IP65/IP66, single lever	430
	E-Xtreme® corrosion proof	547

C-TYPE and V-TYPE 2-lever versions cannot be used to reach 5.000 matings.

frames for modular units with lock-in tab (included)

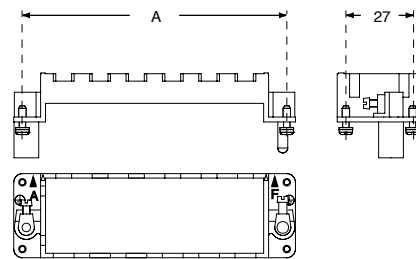


- Q 10.000 MATINGS WITH HNM FRAMES AND HNM ENCLOSURES
- Q 5.000 MATINGS WITH HNM FRAMES AND STANDARD ENCLOSURES, SINGLE LEVER

description	part No.
-frames for modular units with lock-in tab included	
for 2 modular units - for housing size 44.27	RX 02 TM
for 3 modular units - for housing size 57.27	RX 03 TM
for 4 modular units - for housing size 77.27 and 77.62	RX 04 TM
for 6 modular units - for housing size 104.27 and 104.62	RX 06 TM
	RX 02 TF
	RX 03 TF
	RX 04 TF
	RX 06 TF

- die-cast zinc alloy frames
- protective earth (PE)
- possibility of mounting female and male modular units on the same frame
- frames supplied with lock-in tab to attach units
- polarisation on frames
- coding pins **CR..CX**
- for spare lock-in tab **CX CFM** see SPARE SPARTS catalogue

RX TM / TF



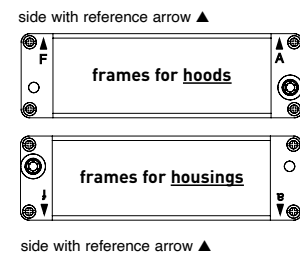
part No.	A (mm)	for housings size
RX 02 TM / TF	44	44.27
RX 03 TM / TF	57	57.27
RX 04 TM / TF	77,5	77.27 and 77.62
RX 06 TM / TF	104	104.27 and 104.62

Earth terminal

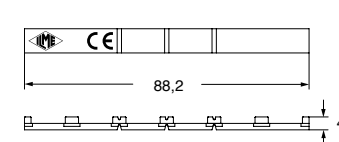
- large: for cables from 4-6 mm², AWG 12-10
- small: for cables from 1-2,5 mm², AWG 18-14

In order to accomodate larger PE conductor cross-sectional area, use CGT PE adapters, see page 319.

position of modules (contact side view)

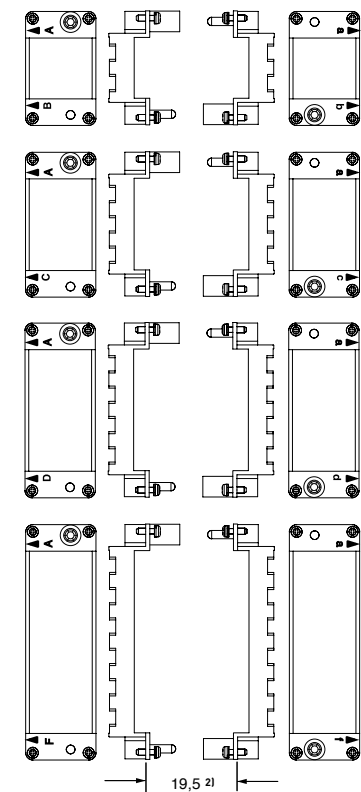


CX CFM (lock-in tab)



Polarisation of frames with relative identification letters and couplings

frame for hoods ¹⁾ frames for housings ¹⁾



1) Warning:

- The module support frames are marked:
- FOR HOODS: **upper-case A-B, A-C, A-D and A-F**
- FOR HOUSINGS: **lower-case a-b, a-c, a-d and a-f**

Positioning the modules in the frames according to the respective letters is ensuring the specular assembly of modules, for which the hood will be coupled correctly to the housing.

2) Distance for:

- electric and fibre optic contacts: max 21 mm
- pneumatic contacts: max 20,5 mm