



T-TYPE / H production lines **HYGIENIC SERIES**

inserts		page:
CDD	24 poles + ⊕	76
CDS	9 poles + ⊕	-
CDSH	9 poles + ⊕	86
CDSH NC	6 poles + ⊕	95
CNE	6 poles + ⊕	110
CSE	6 poles + ⊕	-
CSH	6 poles + ⊕	110
CSH S	6 poles + ⊕	122
CCE	6 poles + ⊕	130
CSS	6 poles + ⊕	148
CT, CTSE (16A *)	6 poles + ⊕	160
CQE	10 poles + ⊕	168
MIXO	2 modules	262 - 317

*) only for standard insulating version THIH

housings with single lever
HNBR gasket



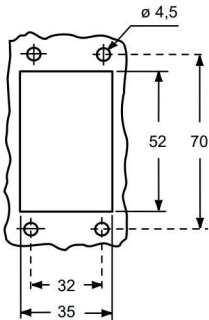
hoods with single lever, top entry
covers, HNBR gasket



description	part No.	entry M	part No.	entry M	part No. (with loop)
-------------	----------	------------	----------	------------	-------------------------

bulkhead mounting housing with thermoplastic lever	THIH 06 L				
surface mounting housing, thermoplastic lever, high construction	TAPH 06 L25	25			
surface mounting housing, thermoplastic lever, high construction	TAPH 06 L32	32			
with thermoplastic lever and gasket, high construction			TAVH 06 LG25	25	
with thermoplastic lever and gasket, high construction			TAVH 06 LG32	32	
cover with thermoplastic lever and gasket					THCH 06 LG

panel cut-out for bulkhead mounting housings



TMAO
Hoods
(page 480)

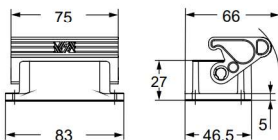


TMAV
Hoods
(page 480)

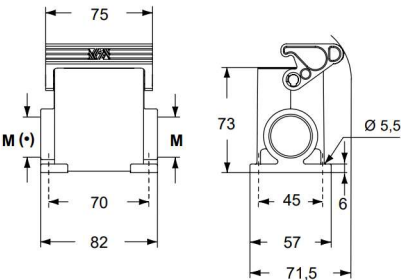
TCHC L
TCHC SL
Covers
with eyelet
(page 481)



THIH L

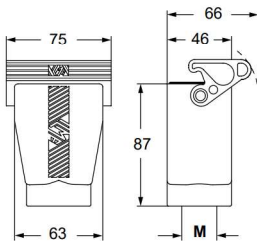


TAPH L

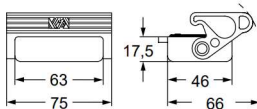


(*) The surface mounting, high construction housings are supplied with an open threaded entry (*) and diametrically opposite a closed threaded entry which can be opened by the user if required (with suitable tool).

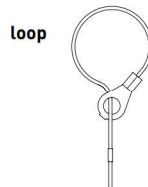
TAVH LG



THCH LG



For fixing on hoods



C[®]UL[®] US Type 12



ambient temperature limits -40 °C / +70 °C

T-TYPE / H production lines **HYGIENIC SERIES**

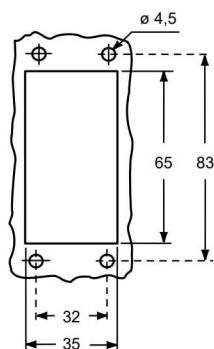
inserts		page:
CDD	42 poles + ⊕	78
CDS	18 poles + ⊕	-
CDSH	18 poles + ⊕	87
CNE	10 poles + ⊕	111
CSE	10 poles + ⊕	-
CSH	10 poles + ⊕	111
CSH S	10 poles + ⊕	123
CCE	10 poles + ⊕	131
CMSH	3+2 (aux) poles + ⊕	136
CMCE	3+2 (aux) poles + ⊕	137
CSS	10 poles + ⊕	149
CT, CTSE (16A) *)	10 poles + ⊕	161
CQE	18 poles + ⊕	169
CX	8/24 poles + ⊕	194
MIXO	3 modules	262 - 317

*) only for standard insulating version THIH

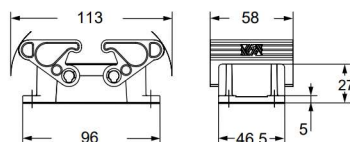
housings with double lever
HNBR gaskethoods with double lever, top entry
covers, HNBR gasket

description	part No.	entry M	part No.	entry M	part No. (with loop)
bulkhead mounting housing with thermoplastic levers	THIH 10				
surface mounting housing, thermoplastic levers, high construction	TAPH 10.25	25			
surface mounting housing, thermoplastic levers, high construction	TAPH 10.32	32			
with thermoplastic levers and gasket, high construction			TAVH 10 G25	25	
with thermoplastic levers and gasket, high construction			TAVH 10 G32	32	
with 2 thermoplastic levers and gasket					THCH 10 G

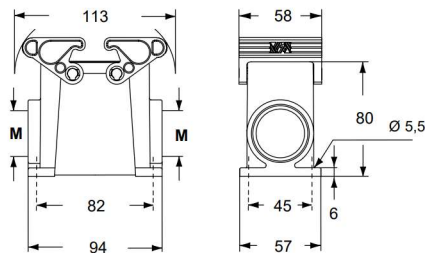
panel cut-out for bulkhead mounting housings

TMA0
Hoods
(page 482)TMAV
Hoods
(page 482)TCHC
TCHC S
Covers
with eyelet
(page 483)

THIH

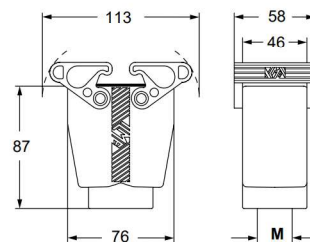


TAPH

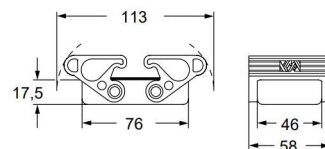


The surface mounting, high construction housings are supplied with an open threaded entry and diametrically opposite a closed threaded entry which can be opened by the user if required (with suitable tool).

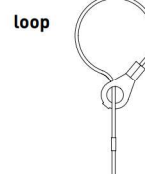
TAVH G



THCH G



For fixing on hoods

C[®]ALUS Type 12

ambient temperature limits -40 °C / +70 °C



T-TYPE / H production lines **HYGIENIC SERIES**

inserts		page:
CD	40 poles + ⊕	70
CDD	72 poles + ⊕	79
CDS	27 poles + ⊕	-
CDSH	27 poles + ⊕	88
CNE	16 poles + ⊕	112
CSE	16 poles + ⊕	-
CSH	16 poles + ⊕	112
CSH S	16 poles + ⊕	124
CCE	16 poles + ⊕	132
CMSH, CMCE	6+2 (aux) poles + ⊕	138 - 139
CSS	16 poles + ⊕	150
CT, CTSE (16A) *)	16 poles + ⊕	162
CQE	32 poles + ⊕	170
CQEE	40 poles + ⊕	176
CP	6 poles + ⊕	178
CX	6/12, 6/36 and 12/2 poles + ⊕	197 - 199
CX	4/0 and 4/2 poles + ⊕	200 - 201
MIXO	4 modules	262 - 317

*) only for standard insulating version THIH

housings with double lever
HNBR gasket



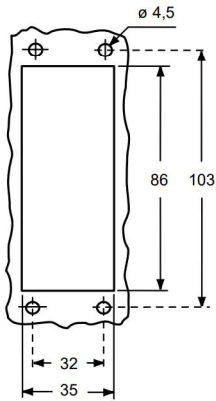
hoods with double lever, top entry
covers, HNBR gasket



description	part No.	entry M	part No.	entry M	part No. (with loop)
-------------	----------	------------	----------	------------	-------------------------

bulkhead mounting housing with thermoplastic levers	THIH 16				
surface mounting housing, thermoplastic levers, high construction	TAPH 16.32	32			
surface mounting housing, thermoplastic levers, high construction	TAPH 16.40	40			
with thermoplastic levers and gasket, high construction			TAVH 16 G32	32	
with thermoplastic levers and gasket, high construction			TAVH 16 G40	40	
cover with 2 thermoplastic levers and gasket					THCH 16 G

panel cut-out for bulkhead mounting housings



TMAO
Hoods
(page 484)

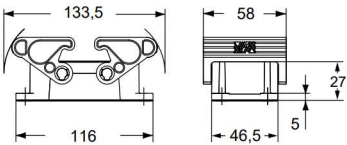


TMAV
Hoods
(page 484)

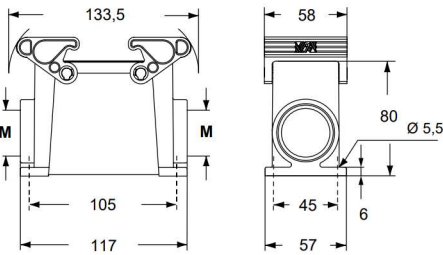
TCHC
TCHC S
Covers
with eyelet
(page 485)



THIH

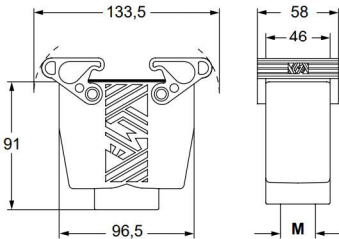


TAPH

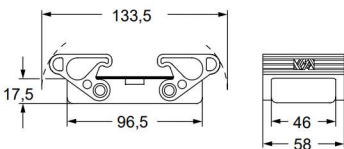


The surface mounting, high construction housings are supplied with an open threaded entry and diametrically opposite a closed threaded entry which can be opened by the user if required (with suitable tool).

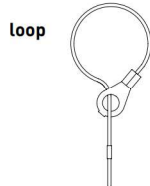
TAVH G



THCH G



For fixing on hoods



CULUS Type 12



ambient temperature limits -40 °C / +70 °C

T-TYPE / H production lines HYGIENIC SERIES

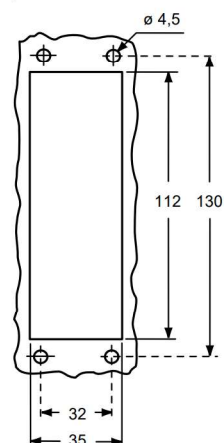
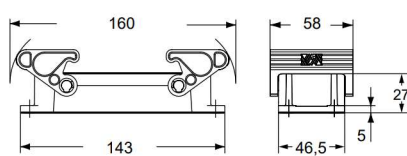
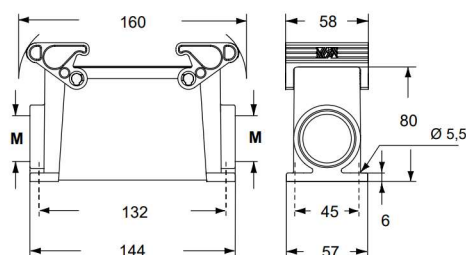
inserts		page:
CD	64 poles + ⊕	72
CDD	108 poles + ⊕	81
CDS	42 poles + ⊕	-
CDSH	42 poles + ⊕	89
CNE	24 poles + ⊕	113
CSE	24 poles + ⊕	-
CSH	24 poles + ⊕	113
CSH S	24 poles + ⊕	125
CCE	24 poles + ⊕	133
CMSH	10+2 (aux) poles + ⊕	140
CMCE	10+2 (aux) poles + ⊕	141
CSS	24 poles + ⊕	151
CT, CTSE (16A) *)	24 poles + ⊕	163
CQE	46 poles + ⊕	171
CQEE	64 poles + ⊕	177
CX	4/8 and 6/6 poles + ⊕	204, 206
MIXO	6 modules	262 - 317

*) only for standard insulating version THIH

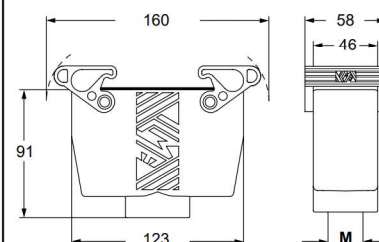
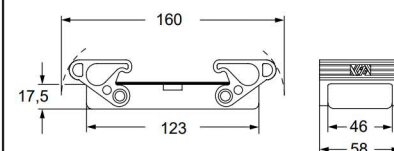
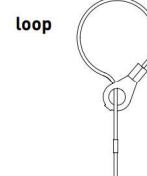
 **housings with double lever
HNBR gasket****hoods with double lever, top entry
covers, HNBR gasket**

description	part No.	entry M	part No.	entry M	part No. (with loop)
bulkhead mounting housing with thermoplastic levers	THIH 24				
surface mounting housing, thermoplastic levers, high construction	TAPH 24.32	32			
surface mounting housing, thermoplastic levers, high construction	TAPH 24.40	40			
with thermoplastic levers and gasket, high construction			TAVH 24 G32	32	
with thermoplastic levers and gasket, high construction			TAVH 24 G40	40	
cover with 2 thermoplastic levers and gasket					THCH 24 G

panel cut-out for bulkhead mounting housings

**TMA0**
Hoods
(page 486)**TMAV**
Hoods
(page 486)**TCHC**
TCHC S
Covers
with eyelet
(page 487)**THIH****TAPH**

The surface mounting, high construction housings are supplied with an open threaded entry and diametrically opposite a closed threaded entry which can be opened by the user if required (with suitable tool).

TAVH G**THCH G****For fixing on hoods****CAUS** Type 12

ambient temperature limits -40 °C / +70 °C

AH M25IF(L) - AH M32IF(L)
 cable glands
 HYGIENIC SERIES

enclosures:
HYGIENIC T-TYPE / H IP66/IP69
(only M25 or M32)

page:
501 - 504

HYGIENIC M25 cable gland

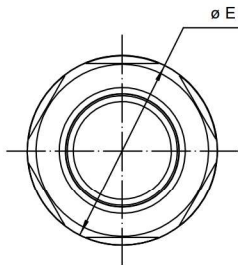
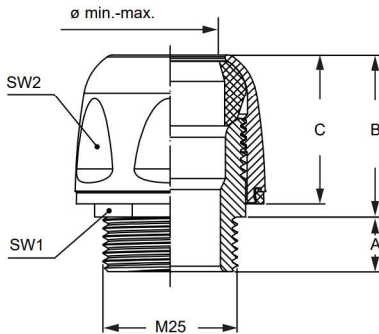
HYGIENIC M32 cable gland



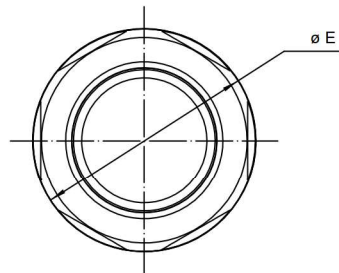
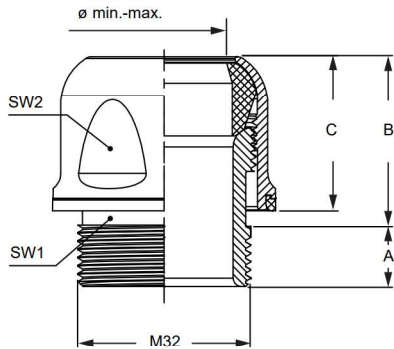
description	part No.	M threading	part No.	M threading
cable glands M25X1,5 for cable \varnothing 12,0-15,0 for cable \varnothing 15,0-18,0	AH M25IF AH M25IFL	M25 M25	AH M32IF AH M32IFL	M32 M32

- NOTE: For details about their installation refer to the instruction sheet accompanying the product:
- ECOLAB compliant
 - EHEDG compliant
 - IP68, IP69 degree of protection
 - ambient temperature limit: -20 °C ... +85 °C
 - us (UL Recognized Component for USA and Canada), us (UL Listed Product for USA and Canada), certified

Designed
 and
 certified in
 accordance
 with the
 EHEDG
 guidelines



part No.	A	B	C	SW1	SW2	Ø E	Ø min.-max.
AH M25IF	10	30	27	24	32	34,9	12,0-15,0
AH M25IFL	10	30	27	24	32	34,9	15,0-18,0



part No.	A	B	C	SW1	SW2	Ø E	Ø min.-max.
AH M32IF	11	32	28	30	38	40,9	18,0-21,0
AH M32IFL	11	32	28	30	38	40,9	20,0-23,0

T-TYPE / C low-temperature HYGIENIC SERIES

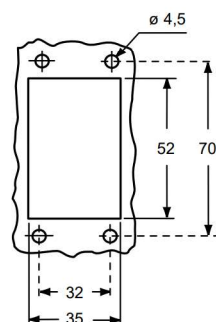
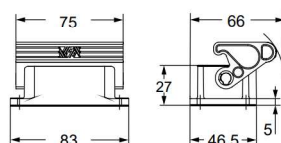
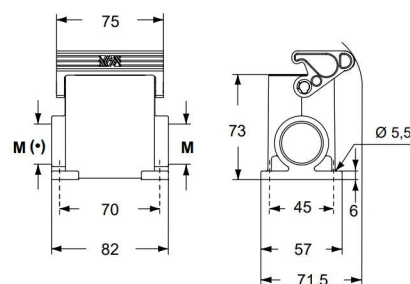
inserts		page:
CDD	24 poles + ⊕	76
CDS	9 poles + ⊕	-
CDSH	9 poles + ⊕	86
CDSH NC	6 poles + ⊕	95
CNE	6 poles + ⊕	110
CSE	6 poles + ⊕	-
CSH	6 poles + ⊕	110
CSH S	6 poles + ⊕	122
CCE	6 poles + ⊕	130
CSS	6 poles + ⊕	148
CT, CTSE (16A) *)	6 poles + ⊕	160
CQE	10 poles + ⊕	168
MIXO	2 modules	262 - 317

*) only for standard insulating version THIC

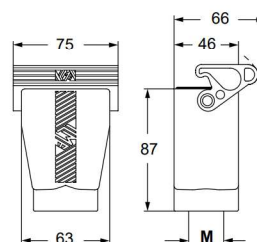
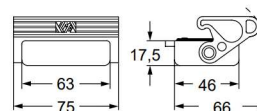
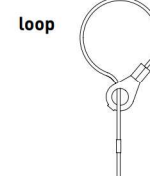
 **housings with single lever
SILICONE gasket****hoods with single lever, top entry
covers, SILICONE gasket**

description	part No.	entry M	part No.	entry M	part No. (with loop)
bulkhead mounting housing with thermoplastic lever	THIC 06 L				
surface mounting housing, thermoplastic lever, high construction	TAPC 06 L25	25			
surface mounting housing, thermoplastic lever, high construction	TAPC 06 L32	32			
with thermoplastic lever and gasket, high construction			TAVC 06 LG25	25	
with thermoplastic lever and gasket, high construction			TAVC 06 LG32	32	
cover with thermoplastic lever and gasket					THCC 06 LG

panel cut-out for bulkhead mounting housings

**TMA0
Hoods
(page 480)****TMAV
Hoods
(page 480)****TCHC L
TCHC SL
Covers
with eyelet
(page 481)****THIC L****TAPC L**

(+) The surface mounting, high construction housings are supplied with an open threaded entry (+) and diametrically opposite a closed threaded entry which can be opened by the user if required (with suitable tool).

TAVC LG**THCC LG****For fixing on hoods****CAUS** Type 12

ambient temperature limits -50 °C / +70 °C



T-TYPE / C low-temperature HYGIENIC SERIES

inserts		page:
CDD	42 poles + ⊕	78
CDS	18 poles + ⊕	-
CDSH	18 poles + ⊕	87
CNE	10 poles + ⊕	111
CSE	10 poles + ⊕	-
CSH	10 poles + ⊕	111
CSH S	10 poles + ⊕	123
CCE	10 poles + ⊕	131
CMSH	3+2 (aux) poles + ⊕	136
CMCE	3+2 (aux) poles + ⊕	137
CSS	10 poles + ⊕	149
CT, CTSE (16A) *)	10 poles + ⊕	161
CQE	18 poles + ⊕	169
CX	8/24 poles + ⊕	194
MIXO	3 modules	262 - 317

*) only for standard insulating version THIC

housings with double lever
SILICONE gasket

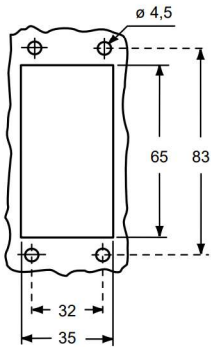


hoods with double lever, top entry
covers, SILICONE gasket



description	part No.	entry M	part No.	entry M	part No. (with loop)
bulkhead mounting housing with thermoplastic levers	THIC 10				
surface mounting housing, thermoplastic levers, high construction	TAPC 10.25	25			
surface mounting housing, thermoplastic levers, high construction	TAPC 10.32	32			
with thermoplastic levers and gasket, high construction			TAVC 10 G25	25	
with thermoplastic levers and gasket, high construction			TAVC 10 G32	32	
cover with 2 thermoplastic levers and gasket					THCC 10 G

panel cut-out for bulkhead mounting housings



TMAO
Hoods
(page 482)

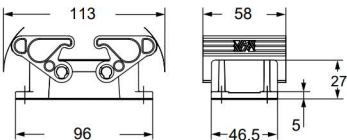


TMAV
Hoods
(page 482)

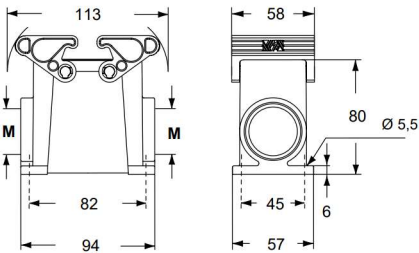
TCHC
TCHC S
Covers
with eyelet
(page 483)



THIC

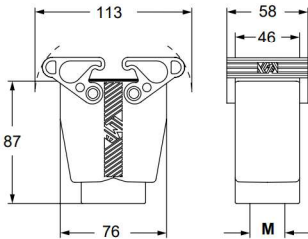


TAPC

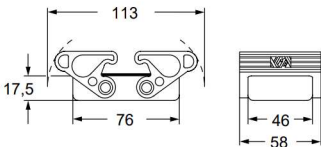


The surface mounting, high construction housings are supplied with an open threaded entry and diametrically opposite a closed threaded entry which can be opened by the user if required (with suitable tool).

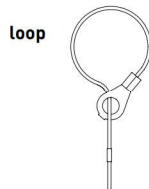
TAVC G



THCC G



For fixing on hoods



C[®]UL[®] US Type 12



ambient temperature limits -50 °C / +70 °C

T-TYPE / C low-temperature HYGIENIC SERIES

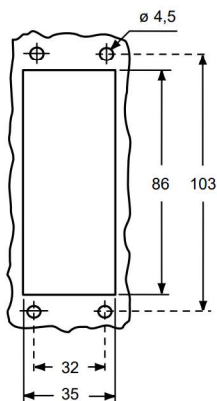
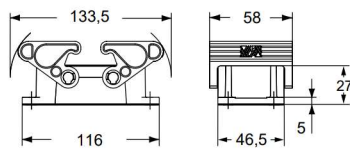
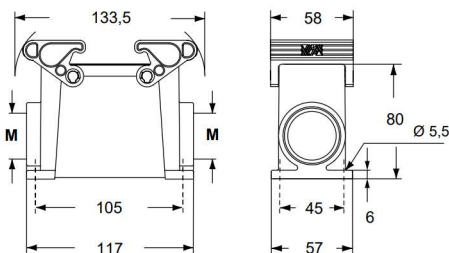
inserts		page:
CD	40 poles + ⊕	70
CDD	72 poles + ⊕	79
CDS	27 poles + ⊕	-
CDSH	27 poles + ⊕	88
CNE	16 poles + ⊕	112
CSE	16 poles + ⊕	-
CSH	16 poles + ⊕	112
CSH S	16 poles + ⊕	124
CCE	16 poles + ⊕	132
CMSH, CMCE	6+2 (aux) poles + ⊕	138 - 139
CSS	16 poles + ⊕	150
CT, CTSE (16A) *)	16 poles + ⊕	162
CQE	32 poles + ⊕	170
CQEE	40 poles + ⊕	176
CP	6 poles + ⊕	178
CX	6/12, 6/36 and 12/2 poles + ⊕	197 - 199
CX	4/0 and 4/2 poles + ⊕	200 - 201
MIXO	4 modules	262 - 317

*) only for standard insulating version THIC

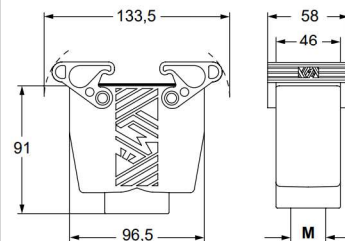
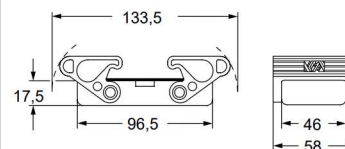
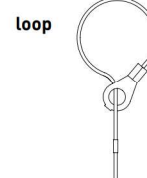
**housings with double lever
SILICONE gasket****hoods with double lever, top entry
covers, SILICONE gasket**

description	part No.	entry M	part No.	entry M	part No. (with loop)
bulkhead mounting housing with thermoplastic levers	THIC 16				
surface mounting housing, thermoplastic levers, high construction	TAPC 16.32	32			
surface mounting housing, thermoplastic levers, high construction	TAPC 16.40	40			
with thermoplastic levers and gasket, high construction			TAVC 16 G32	32	
with thermoplastic levers and gasket, high construction			TAVC 16 G40	40	
cover with 2 thermoplastic levers and gasket					THCC 16 G

panel cut-out for bulkhead mounting housings

**TMAO
Hoods
(page 484)****TMAV
Hoods
(page 484)****TCHC
TCHC S
Covers
with eyelet
(page 485)****THIC****TAPC**

The surface mounting, high construction housings are supplied with an open threaded entry and diametrically opposite a closed threaded entry which can be opened by the user if required (with suitable tool).

TAVC G**THCC G****For fixing on hoods****CAUS** Type 12

ambient temperature limits -50 °C / +70 °C



T-TYPE / C low-temperature HYGIENIC SERIES

inserts		page:
CD	64 poles + ⊕	72
CDD	108 poles + ⊕	81
CDS	42 poles + ⊕	-
CDSH	42 poles + ⊕	89
CNE	24 poles + ⊕	113
CSE	24 poles + ⊕	-
CSH	24 poles + ⊕	113
CSH S	24 poles + ⊕	125
CCE	24 poles + ⊕	133
CMSH	10+2 (aux) poles + ⊕	140
CMCE	10+2 (aux) poles + ⊕	141
CSS	24 poles + ⊕	151
CT, CTSE (16A) *)	24 poles + ⊕	163
CQE	46 poles + ⊕	171
CQEE	64 poles + ⊕	177
CX	4/8 and 6/6 poles + ⊕	204, 206
MIXO	6 modules	262 - 317

*) only for standard insulating version THIC

housings with double lever
SILICONE gasket

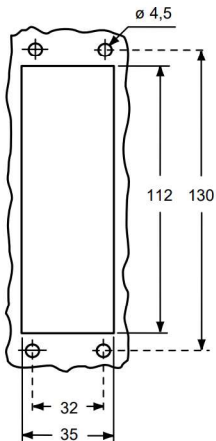


hoods with double lever, top entry
covers, SILICONE gasket



description	part No.	entry M	part No.	entry M	part No. (with loop)
bulkhead mounting housing with thermoplastic levers	THIC 24				
surface mounting housing, thermoplastic levers, high construction	TAPC 24.32	32			
surface mounting housing, thermoplastic levers, high construction	TAPC 24.40	40			
with thermoplastic levers and gasket, high construction			TAVC 24 G32	32	
with thermoplastic levers and gasket, high construction			TAVC 24 G40	40	
cover with 2 thermoplastic levers and gasket					THCC 24 G

panel cut-out for bulkhead mounting housings



TMAO
Hoods
(page 486)

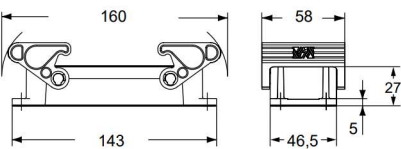


TMAV
Hoods
(page 486)

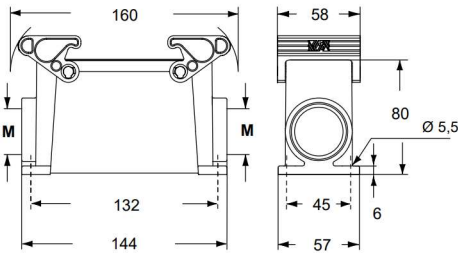
TCHC
TCHC S
Covers
with eyelet
(page 487)



THIC

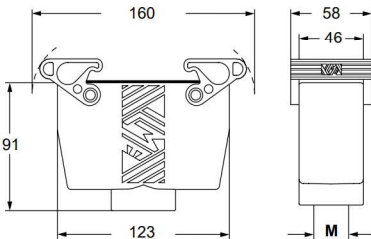


TAPC

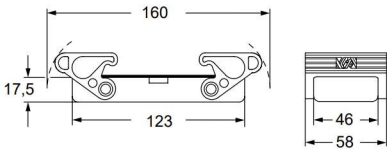


The surface mounting, high construction housings are supplied with an open threaded entry and diametrically opposite a closed threaded entry which can be opened by the user if required (with suitable tool).

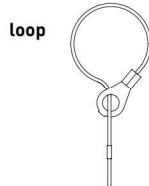
TAVC G



THCC G



For fixing on hoods



C[®]UL[®] US Type 12



ambient temperature limits -50 °C / +70 °C