

T-TYPE insulating STANDARD APPLICATIONS

inserts

CDD	24 poles + ⊕	76
CDS	9 poles + ⊕	-
CDSH	9 poles + ⊕	86
CDSH NC	6 poles + ⊕	95
CNE	6 poles + ⊕	110
CSE	6 poles + ⊕	-
CSH	6 poles + ⊕	110
CSH S	6 poles + ⊕	122
CCE	6 poles + ⊕	130
CSS	6 poles + ⊕	148
CT, CTSE (16A) *)	6 poles + ⊕	160
CQE	10 poles + ⊕	168
MIXO	2 modules	262 - 317

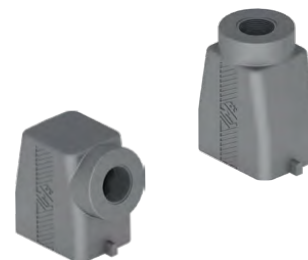
*) only for standard insulating version TCHI

page:

housings with single lever



hoods with 2 pegs



description

part No.

entry
M

part No.

entry
M

bulkhead mounting housing with thermoplastic lever

TCHI 06 L

surface mounting housing with thermoplastic lever, high construction

TMAP 06 L25

25

surface mounting housing with thermoplastic lever, high construction

TMAP 06 L32

32

with pegs, side entry, high construction

TMAO 06 L25

25

with pegs, side entry, high construction

TMAO 06 L32

32

with pegs, top entry, high construction

TMAV 06 L25

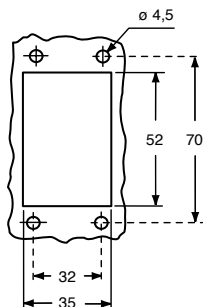
25

with pegs, top entry, high construction

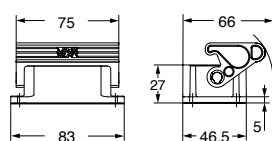
TMAV 06 L32

32

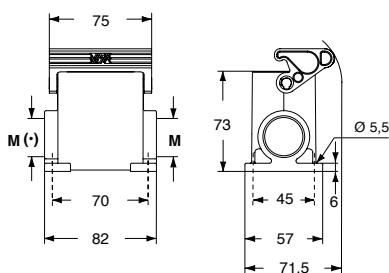
panel cut-out for bulkhead mounting housings



TCHI L

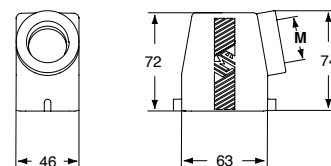


TMAP L

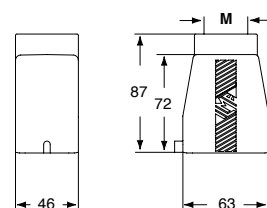


(-) The surface mounting, high construction housings are supplied with an open threaded entry (-) and diametrically opposite a closed threaded entry which can be opened by the user if required (with suitable tool).

TMAO L



TMAV L



Type 12


ambient temperature limits -40 °C / +90 °C

T-TYPE insulating STANDARD APPLICATIONS

inserts		page:
CDD	24 poles + ⊕	76
CDS	9 poles + ⊕	-
CDSH	9 poles + ⊕	86
CDSH NC	6 poles + ⊕	95
CNE	6 poles + ⊕	110
CSE	6 poles + ⊕	-
CSH	6 poles + ⊕	110
CSH S	6 poles + ⊕	122
CCE	6 poles + ⊕	130
CSS	6 poles + ⊕	148
CT, CTSE (16A) *)	6 poles + ⊕	160
CQE	10 poles + ⊕	168
MIXO	2 modules	262 - 317

*) only for standard insulating version TCHI

hoods with single lever
top entry

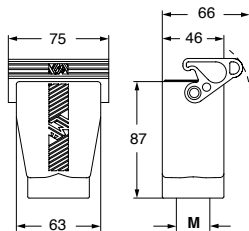


covers

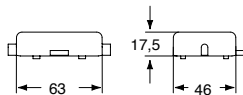


description	part No.	entry M	part No. (with eyelet)	part No. (with loop)
with thermoplastic lever and gasket, high construction	TMAV 06 LG25	25		
with thermoplastic lever and gasket, high construction	TMAV 06 LG32	32		
with pegs			TCHC 06 L	TCHC 06 SL
with thermoplastic lever and gasket				TCHC 06 LG

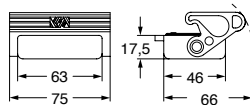
TMAV LG



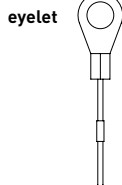
TCHC L (SL)



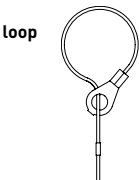
TCHC LG



For fixing
on housings



For fixing
on hoods



CUUS® Type 12



ambient temperature limits -40 °C / +90 °C

T-TYPE insulating STANDARD APPLICATIONS

inserts

CDD	42 poles + ⊕	78
CDS	18 poles + ⊕	-
CDSH	18 poles + ⊕	87
CNE	10 poles + ⊕	111
CSE	10 poles + ⊕	-
CSH	10 poles + ⊕	111
CSH S	10 poles + ⊕	123
CCE	10 poles + ⊕	131
CMSH	3+2 (aux) poles + ⊕	136
CMCE	3+2 (aux) poles + ⊕	137
CSS	10 poles + ⊕	149
CT, CTSE (16A) *)	10 poles + ⊕	161
CQE	18 poles + ⊕	169
CX	8/24 poles + ⊕	194
MIXO	3 modules	262 - 317

page:

housings with double lever



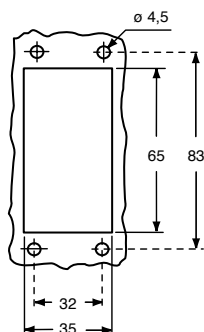
hoods with 4 pegs



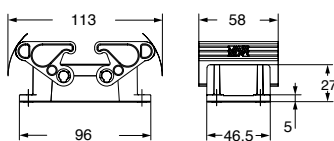
*) only for standard insulating version TCHI

description	part No.	entry M	part No.	entry M
bulkhead mounting housing with thermoplastic levers	TCHI 10			
surface mounting housing, thermoplastic levers, high construction	TMAP 10.25	25		
surface mounting housing, thermoplastic levers, high construction	TMAP 10.32	32		
with pegs, side entry, high construction			TMAO 10.25	25
with pegs, side entry, high construction			TMAO 10.32	32
with pegs, top entry, high construction			TMAV 10.25	25
with pegs, top entry, high construction			TMAV 10.32	32

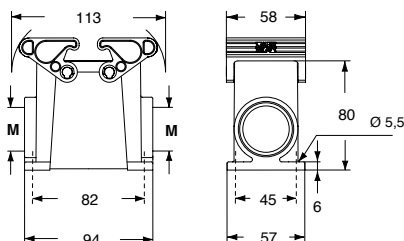
panel cut-out for bulkhead mounting housings



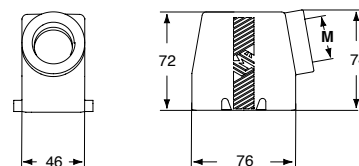
TCHI



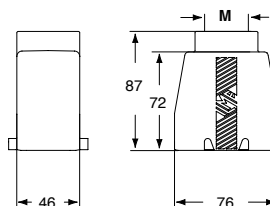
TMAP



TMAO



TMAV



The surface mounting, high construction housings are supplied with an open threaded entry and diametrically opposite a closed threaded entry which can be opened by the user if required (with suitable tool).

CAUS Type 12



ambient temperature limits -40 °C / +90 °C



T-TYPE insulating STANDARD APPLICATIONS

inserts		page:
CDD	42 poles + ⊕	78
CDS	18 poles + ⊕	-
CDSH	18 poles + ⊕	87
CNE	10 poles + ⊕	111
CSE	10 poles + ⊕	-
CSH	10 poles + ⊕	111
CSH S	10 poles + ⊕	123
CCE	10 poles + ⊕	131
CMSH	3+2 (aux) poles + ⊕	136
CMCE	3+2 (aux) poles + ⊕	137
CSS	10 poles + ⊕	149
CT, CTSE (16A *)	10 poles + ⊕	161
CQE	18 poles + ⊕	169
CX	8/24 poles + ⊕	194
MIXO	3 modules	262 - 317

*) only for standard insulating version TCHI

hoods with double lever
top entry

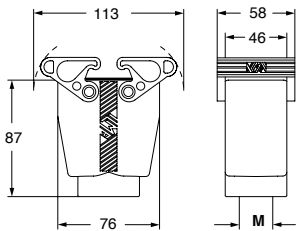


covers

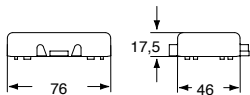


description	part No.	entry M	part No. (with eyelet)	part No. (with loop)
with thermoplastic levers and gasket, high construction	TMAV 10 G25	25		
with thermoplastic levers and gasket, high construction	TMAV 10 G32	32		
with 4 pegs			TCHC 10	TCHC 10 S
with 2 thermoplastic levers and gasket				TCHC 10 G

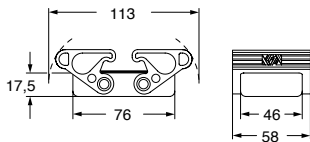
TMAV G



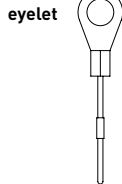
TCHC (S)



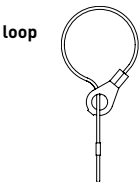
TCHC G



For fixing
on housings



For fixing
on hoods



CAUS Type 12



ambient temperature limits -40 °C / +90 °C

T-TYPE STANDARD

T-TYPE insulating STANDARD APPLICATIONS

inserts

CD	40 poles + ⊕	70
CDD	72 poles + ⊕	79
CDS	27 poles + ⊕	-
CDSH	27 poles + ⊕	88
CNE	16 poles + ⊕	112
CSE	16 poles + ⊕	-
CSH	16 poles + ⊕	112
CSH S	16 poles + ⊕	124
CCE	16 poles + ⊕	132
CMSH, CMCE	6+2 (aux) poles + ⊕	138 - 139
CSS	16 poles + ⊕	150
CT, CTSE (16A) *)	16 poles + ⊕	162
CQE	32 poles + ⊕	170
CQEE	40 poles + ⊕	176
CP	6 poles + ⊕	178
CX	6/12, 6/36 and 12/2 poles + ⊕	197 - 199
CX	4/0 and 4/2 poles + ⊕	200 - 201
MIXO	4 modules	262 - 317

page:

housings with double lever



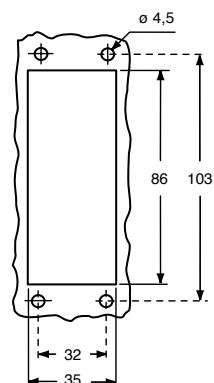
hoods with 4 pegs



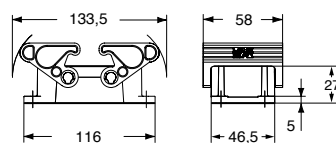
*) only for standard insulating version TCHI

description	part No.	entry M	part No.	entry M
bulkhead mounting housing with thermoplastic levers	TCHI 16			
surface mounting housing, thermoplastic levers, high construction	TMAP 16.32	32		
surface mounting housing, thermoplastic levers, high construction	TMAP 16.40	40		
with pegs, side entry, high construction			TMAO 16.32	32
with pegs, side entry, high construction			TMAO 16.40	40
with pegs, top entry, high construction			TMAV 16.32	32
with pegs, top entry, high construction			TMAV 16.40	40

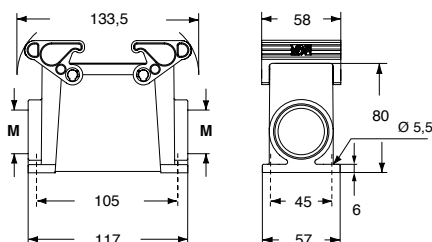
panel cut-out for bulkhead mounting housings



TCHI

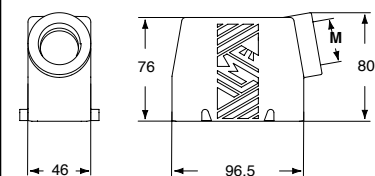


TMAP

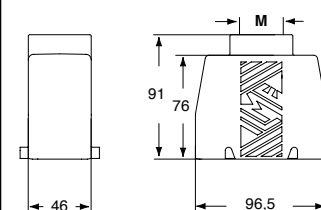


The surface mounting, high construction housings are supplied with an open threaded entry and diametrically opposite a closed threaded entry which can be opened by the user if required (with suitable tool).

TMAO



TMAV



T-TYPE insulating STANDARD APPLICATIONS

inserts		page:
CD	40 poles + ⊕	70
CDD	72 poles + ⊕	79
CDS	27 poles + ⊕	-
CDSH	27 poles + ⊕	88
CNE	16 poles + ⊕	112
CSE	16 poles + ⊕	-
CSH	16 poles + ⊕	112
CSH S	16 poles + ⊕	124
CCE	16 poles + ⊕	132
CMSH, CMCE	6+2 (aux) poles + ⊕	138 - 139
CSS	16 poles + ⊕	150
CT, CTSE (16A *)	16 poles + ⊕	162
CQE	32 poles + ⊕	170
CQEE	40 poles + ⊕	176
CP	6 poles + ⊕	178
CX	6/12, 6/36 and 12/2 poles + ⊕	197 - 199
CX	4/0 and 4/2 poles + ⊕	200 - 201
MIXO	4 modules	262 - 317

*) only for standard insulating version TCHI

hoods with double lever
top entry

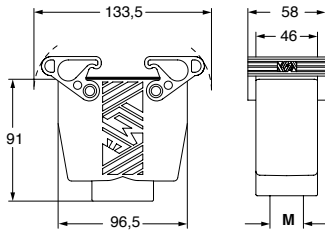


covers

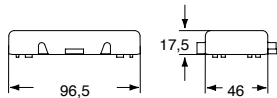


description	part No.	entry M	part No. (with eyelet)	part No. (with loop)
with thermoplastic levers and gasket, high construction	TMAV 16 G32	32		
with thermoplastic levers and gasket, high construction	TMAV 16 G40	40		
with 4 pegs			TCHC 16	TCHC 16 S
with 2 thermoplastic levers and gasket				TCHC 16 G

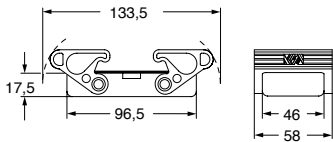
TMAV G



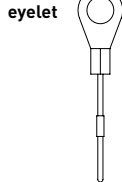
TCHC (S)



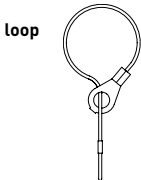
TCHC G



For fixing
on housings



For fixing
on hoods



CAUS Type 12



ambient temperature limits -40 °C / +90 °C

T-TYPE insulating STANDARD APPLICATIONS

inserts

CD	64 poles + ⊕	72
CDD	108 poles + ⊕	81
CDS	42 poles + ⊕	-
CDSH	42 poles + ⊕	89
CNE	24 poles + ⊕	113
CSE	24 poles + ⊕	-
CSH	24 poles + ⊕	113
CSH S	24 poles + ⊕	125
CCE	24 poles + ⊕	133
CMSH	10+2 (aux) poles + ⊕	140
CMCE	10+2 (aux) poles + ⊕	141
CSS	24 poles + ⊕	151
CT, CTSE (16A) *)	24 poles + ⊕	163
CQE	46 poles + ⊕	171
CQEE	64 poles + ⊕	177
CX	4/8 and 6/6 poles + ⊕	204, 206
MIXO	6 modules	262 - 317

*) only for standard insulating version TCHI

page:

housings with double lever



hoods with 4 pegs



description

part No.

entry
M

part No.

entry
M

bulkhead mounting housing with thermoplastic levers

TCHI 24

surface mounting housing, thermoplastic levers, high construction

TMAP 24.32

32

surface mounting housing, thermoplastic levers, high construction

TMAP 24.40

40

with pegs, side entry, high construction

TMAO 24.32

32

with pegs, side entry, high construction

TMAO 24.40

40

with pegs, top entry, high construction

TMAV 24.32

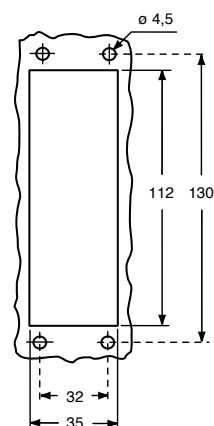
32

with pegs, top entry, high construction

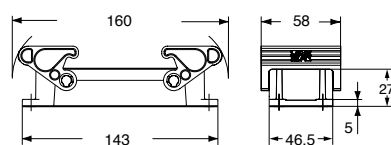
TMAV 24.40

40

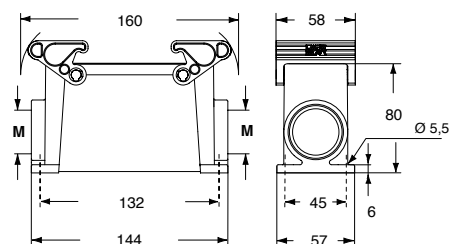
panel cut-out for bulkhead mounting housings



TCHI

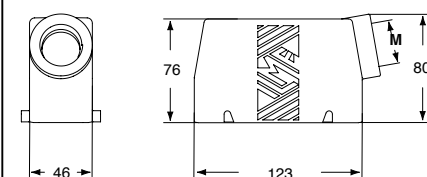


TMAP

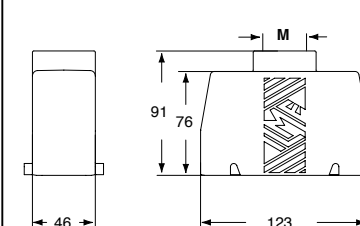


The surface mounting, high construction housings are supplied with an open threaded entry and diametrically opposite a closed threaded entry which can be opened by the user if required (with suitable tool).

TMAO



TMAV



 Type 12


ambient temperature limits -40 °C / +90 °C

T-TYPE insulating STANDARD APPLICATIONS

inserts

		page:
CD	64 poles + ⊕	72
CDD	108 poles + ⊕	81
CDS	42 poles + ⊕	-
CDSH	42 poles + ⊕	89
CNE	24 poles + ⊕	113
CSE	24 poles + ⊕	-
CSH	24 poles + ⊕	113
CSH S	24 poles + ⊕	125
CCE	24 poles + ⊕	133
CMSH	10+2 (aux) poles + ⊕	140
CMCE	10+2 (aux) poles + ⊕	141
CSS	24 poles + ⊕	151
CT, CTSE (16A) *)	24 poles + ⊕	163
CQE	46 poles + ⊕	171
CQEE	64 poles + ⊕	177
CX	4/8 and 6/6 poles + ⊕	204, 206
MIXO	6 modules	262 - 317

*) only for standard insulating version TCHI

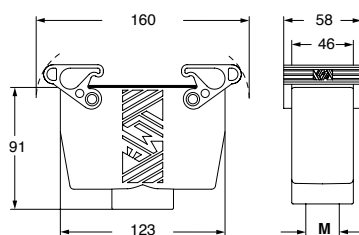
hoods with double lever
top entry

covers

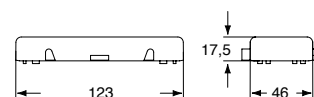


description	part No.	entry M	part No. (with eyelet)	part No. (with loop)
with thermoplastic levers and gasket, high construction	TMAV 24 G32	32		
with thermoplastic levers and gasket, high construction	TMAV 24 G40	40		
with 4 pegs			TCHC 24	TCHC 24 S
with 2 thermoplastic levers and gasket				TCHC 24 G

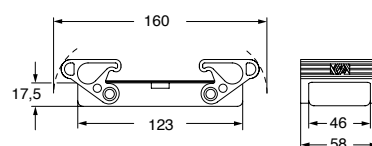
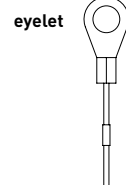
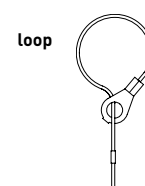
TMAV G



TCHC (S)



TCHC G

For fixing
on housingsFor fixing
on hoodscUL[®] Type 12

ambient temperature limits -40 °C / +90 °C

T-TYPE/W

Aggressive environments

AGGRESSIVE ENVIRONMENTS

SUM-UP

- ☑ Enclosures in thermoplastic material, dark grey RAL 7012 colour, with high thicknesses providing structural solidity and durability
- ☑ Built-in FKM fluoroelastomer sealing gaskets
- ☑ Locking levers in thermoplastic material colour grey RAL 7001
- ☑ M25, M32 and M40 threaded cable entries
- ☑ IP66/IP69 degree of protection according to EN 60529
- ☑ UL TYPE 12 degree of protection according to ANSI/UL50
- ☑ Each enclosure carries its own part number, thread size and conformity markings and UL type rating
- ☑ Ambient temperature range: -40 °C / +90 °C

Q NOTE: As the characterizing element of the T-TYPE/W series is the different sealing gasket material, hoods and covers without sealing gaskets for this series are the same of T-TYPE Standard.



T-TYPE / W insulating AGGRESSIVE ENVIRONMENTS

inserts

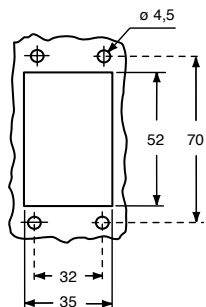
		page:
CDD	24 poles + ⊕	76
CDS	9 poles + ⊕	-
CDSH	9 poles + ⊕	86
CDSH NC	6 poles + ⊕	95
CNE	6 poles + ⊕	110
CSE	6 poles + ⊕	-
CSH	6 poles + ⊕	110
CSH S	6 poles + ⊕	122
CCE	6 poles + ⊕	130
CSS	6 poles + ⊕	148
CT, CTSE (16A) *)	6 poles + ⊕	160
CQE	10 poles + ⊕	168
MIXO	2 modules	262 - 317

*) only for standard insulating version THIW

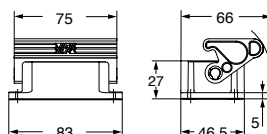
 housings with single lever
FKM gasket hoods with single lever, top entry
covers, FKM gasket

description	part No.	entry M	part No.	entry M	part No. (with loop)
bulkhead mounting housing with thermoplastic lever	THIW 06 L				
surface mounting housing, thermoplastic lever, high construction	TAPW 06 L25	25			
surface mounting housing, thermoplastic lever, high construction	TAPW 06 L32	32			
with thermoplastic lever and gasket, high construction			TAVW 06 LG25	25	
with thermoplastic lever and gasket, high construction			TAVW 06 LG32	32	
cover with thermoplastic lever and gasket					THCW 06 LG

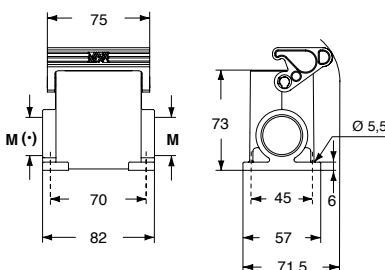
panel cut-out for bulkhead mounting housings

TMA0
Hoods
(page 480)TMAV
Hoods
(page 480)TCHC L
TCHC SL
Covers
with eyelet
(page 481)

THIW L

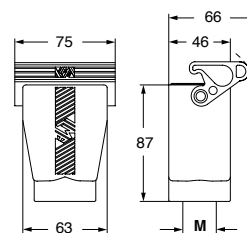


TAPW L

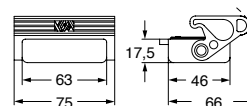


(-) The surface mounting, high construction housings are supplied with an open threaded entry (-) and diametrically opposite a closed threaded entry which can be opened by the user if required (with suitable tool).

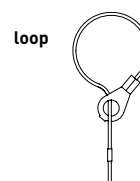
TAVW LG



THCW LG



For fixing on hoods



cRUS® Type 12



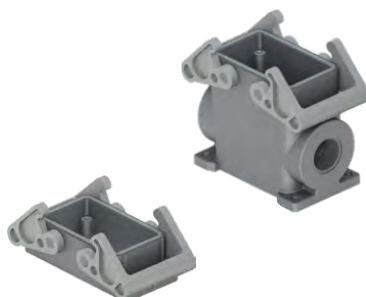
ambient temperature limits -40 °C / +90 °C

T-TYPE / W insulating AGGRESSIVE ENVIRONMENTS

inserts

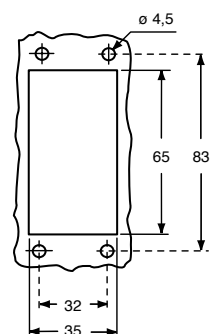
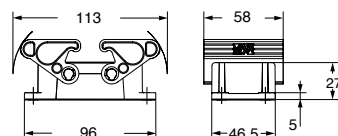
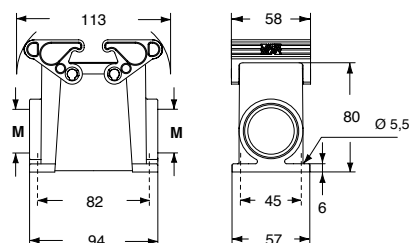
		page:
CDD	42 poles + ⊕	78
CDS	18 poles + ⊕	-
CDSH	18 poles + ⊕	87
CNE	10 poles + ⊕	111
CSE	10 poles + ⊕	-
CSH	10 poles + ⊕	111
CSH S	10 poles + ⊕	123
CCE	10 poles + ⊕	131
CMSH	3+2 (aux) poles + ⊕	136
CMCE	3+2 (aux) poles + ⊕	137
CSS	10 poles + ⊕	149
CT, CTSE (16A) *)	10 poles + ⊕	161
CQE	18 poles + ⊕	169
CX	8/24 poles + ⊕	194
MIXO	3 modules	262 - 317

*) only for standard insulating version THIW

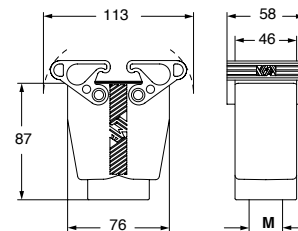
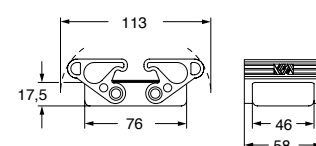
housings with double lever
FKM gaskethoods with double lever, top entry
covers, FKM gasket

description	part No.	entry M	part No.	entry M	part No. (with loop)
bulkhead mounting housing with thermoplastic levers	THIW 10				
surface mounting housing, thermoplastic levers, high construction	TAPW 10.25	25			
surface mounting housing, thermoplastic levers, high construction	TAPW 10.32	32			
with thermoplastic levers and gasket, high construction			TAVW 10 G25	25	
with thermoplastic levers and gasket, high construction			TAVW 10 G32	32	
cover with 2 thermoplastic levers and gasket					THCW 10 G

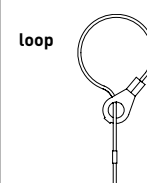
panel cut-out for bulkhead mounting housings

**TMA0**
Hoods
(page 482)**TMAV**
Hoods
(page 482)**TCHC**
TCHC S
Covers
with eyelet
(page 483)**THIW****TAPW**

The surface mounting, high construction housings are supplied with an open threaded entry and diametrically opposite a closed threaded entry which can be opened by the user if required (with suitable tool).

TAVW G**THCW G**

For fixing on hoods

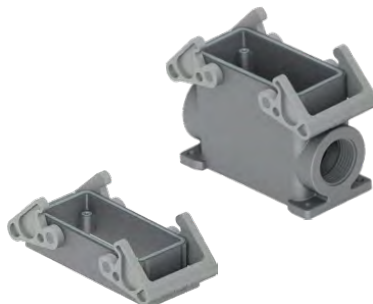
**CAUS** Type 12

ambient temperature limits -40 °C / +90 °C

T-TYPE / W insulating AGGRESSIVE ENVIRONMENTS

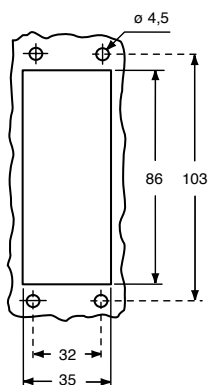
inserts		page:
CD	40 poles + ⊕	70
CDD	72 poles + ⊕	79
CDS	27 poles + ⊕	-
CDSH	27 poles + ⊕	88
CNE	16 poles + ⊕	112
CSE	16 poles + ⊕	-
CSH	16 poles + ⊕	112
CSH S	16 poles + ⊕	124
CCE	16 poles + ⊕	132
CMSH, CMCE	6+2 (aux) poles + ⊕	138 - 139
CSS	16 poles + ⊕	150
CT, CTSE (16A) *)	16 poles + ⊕	162
CQE	32 poles + ⊕	170
CQEE	40 poles + ⊕	176
CP	6 poles + ⊕	178
CX	6/12, 6/36 and 12/2 poles + ⊕	197 - 199
CX	4/0 and 4/2 poles + ⊕	200 - 201
MIXO	4 modules	262 - 317

*) only for standard insulating version THIW

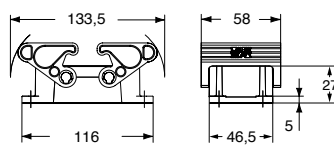
housings with double lever
FKM gaskethoods with double lever, top entry
covers, FKM gasket

description	part No.	entry M	part No.	entry M	part No. (with loop)
bulkhead mounting housing with thermoplastic levers	THIW 16				
surface mounting housing, thermoplastic levers, high construction	TAPW 16.32	32			
surface mounting housing, thermoplastic levers, high construction	TAPW 16.40	40			
with thermoplastic levers and gasket, high construction			TAVW 16 G32	32	
with thermoplastic levers and gasket, high construction			TAVW 16 G40	40	
cover with 2 thermoplastic levers and gasket					THCW 16 G

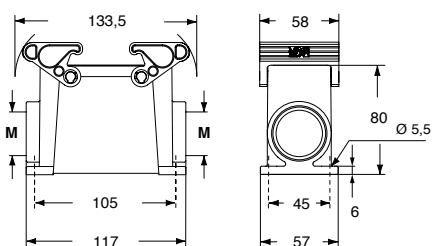
panel cut-out for bulkhead mounting housings

TMA0
Hoods
(page 484)TMAV
Hoods
(page 484)TCHC
TCHC S
Covers
with eyelet
(page 485)

THIW

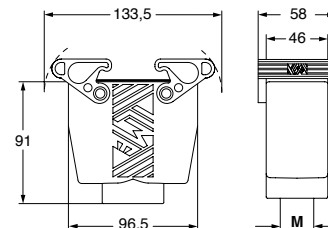


TAPW

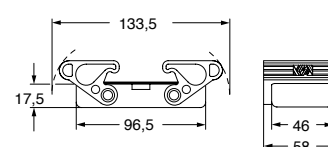


The surface mounting, high construction housings are supplied with an open threaded entry and diametrically opposite a closed threaded entry which can be opened by the user if required (with suitable tool).

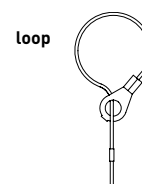
TAVW G



THCW G



For fixing on hoods



cRUS® Type 12



ambient temperature limits -40 °C / +90 °C

T-TYPE / W insulating AGGRESSIVE ENVIRONMENTS

inserts		page:
CD	64 poles + ⊕	72
CDD	108 poles + ⊕	81
CDS	42 poles + ⊕	-
CDSH	42 poles + ⊕	89
CNE	24 poles + ⊕	113
CSE	24 poles + ⊕	-
CSH	24 poles + ⊕	113
CSH S	24 poles + ⊕	125
CCE	24 poles + ⊕	133
CMSH	10+2 (aux) poles + ⊕	140
CMCE	10+2 (aux) poles + ⊕	141
CSS	24 poles + ⊕	151
CT, CTSE (16A) *)	24 poles + ⊕	163
CQE	46 poles + ⊕	171
CQEE	64 poles + ⊕	177
CX	4/8 and 6/6 poles + ⊕	204, 206
MIXO	6 modules	262 - 317

*) only for standard insulating version THIW

**housings with double lever
FKM gasket**

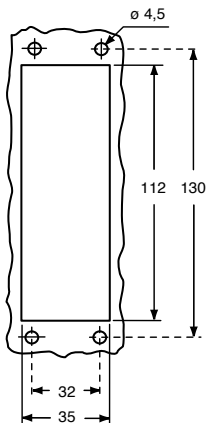


hoods with double lever, top entry covers, FKM gasket



description	part No.	entry M	part No.	entry M	part No. (with loop)
bulkhead mounting housing with thermoplastic levers	THIW 24				
surface mounting housing, thermoplastic levers, high construction	TAPW 24.32	32			
surface mounting housing, thermoplastic levers, high construction	TAPW 24.40	40			
with thermoplastic levers and gasket, high construction			TAVW 24 G32	32	
with thermoplastic levers and gasket, high construction			TAVW 24 G40	40	
cover with 2 thermoplastic levers and gasket					THCW 24 G

panel cut-out for bulkhead mounting housings



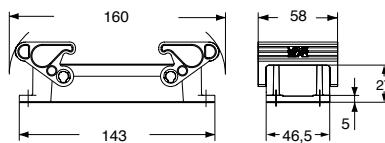
**TMAO
Hoods
(page 486)**

TMAV
Hoods
(page 486)

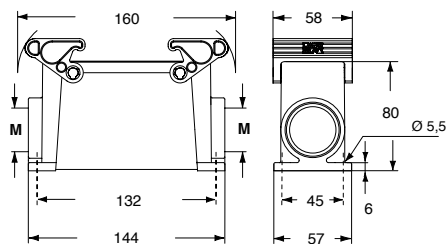
TCHC
TCHC S
Covers
with eyelet
(page 487)



ambient temperature limits -40 °C / +90 °C

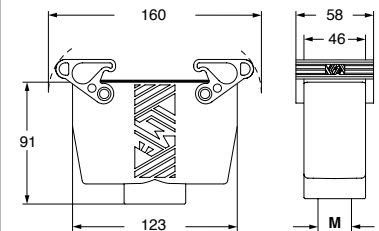
THIW

TAPW

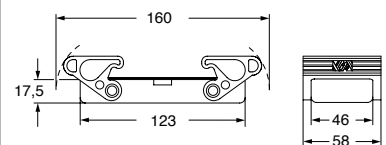


The surface mounting, high construction housings are supplied with an open threaded entry and diametrically opposite a closed threaded entry which can be opened by the user if required (with suitable tool).

TAVW G



THCW G



For fixing on hoods

