

CX 8 poles (16A – 230/400V) + 24 poles (10A – 160V) + ⚡

enclosures: size "57.27"	page:
C-TYPE IP65/IP66	393 - 401
C7 IP67, two levers	438
V-TYPE IP65/IP66, single lever	448 - 453
BIG hoods	468 - 469
T-TYPE IP65 insulating	482 - 483
T-TYPE / W IP66/IP69 insulating	490
HYGIENIC T-TYPE / H IP66/IP69	502
HYGIENIC T-TYPE / C IP66/IP69, -50 °C	507
W-TYPE for aggressive environments	522
E-Xtreme® corrosion proof	532 - 533, 543, 552 - 553
EMC	579
Central lever	606 - 608
LS-TYPE	620 - 621
IP68	636 - 639
panel supports:	page:
COB	652 - 653

inserts, crimp connections

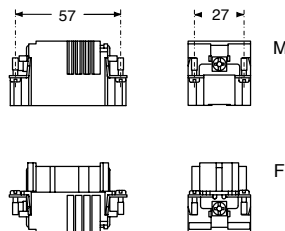


description	part No.
-------------	----------

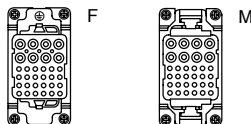
without contacts (to be ordered separately)
female inserts for female contacts
male inserts for male contacts

CXF 8/24
CXM 8/24

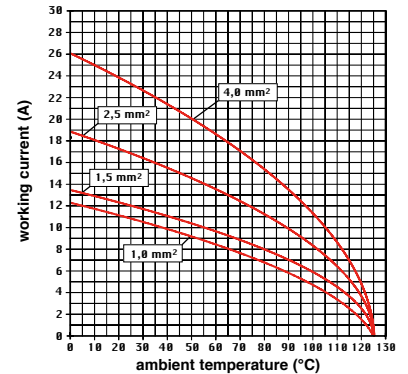
- characteristics according to EN 61984:
16A 230/400V 4kV 3
16A 400V 4kV 2
10A 160V 2,5kV 3
10A 250V 4kV 2
- certified
- rated voltage according to UL/CSA: 600V
- insulation resistance: ≥ 10 GΩ
- ambient temperature limit: -40 °C ... +125 °C
- made of self-extinguishing thermoplastic resin UL 94V-0
- mechanical life: ≥ 500 cycles
- contact resistance:
≤ 1 mΩ (8 poles)
≤ 3 mΩ (24 poles)
- **it is recommended to crimp the contacts with crimping tools homologated by ILME**
(please see the crimping tool section 16A contacts, CCF, CCM, CC...AN series and 10A contacts CDF, CDM series on pages 708 - 741)
- PCBs interface, see article CIF 2.4 (10A contacts)
- for max. current load see the connector inserts derating diagrams below; for more information see page 28



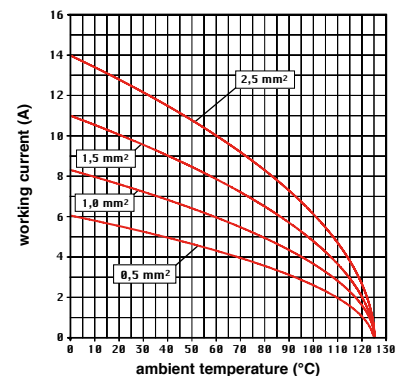
contacts side (front view)



CX 8/24 power poles connector inserts
Maximum current load derating diagram



CX 8/24 auxiliary poles connector inserts
Maximum current load derating diagram

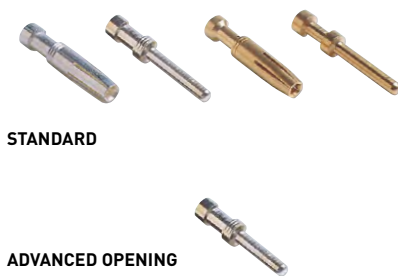


Note: for connector with power poles and auxiliary poles simultaneously loaded in the combinations

power poles	auxiliary poles
4,0 mm ²	2,5 mm ²
2,5 mm ²	1,5 mm ²
1,5 mm ²	1,0 mm ²
1,0 mm ²	0,5 mm ²

with power / auxiliary current ratios = 1,6 / 1

**16A crimp contacts
standard or for advanced opening
silver and gold plated**



**10A crimp contacts
silver and gold plated**



CX 8/24

description			part No.		part No.
16A female contacts					
0,14-0,37 mm ²	AWG 26-22	one groove	CCFA 0.3	silver plated	CCFD 0.3
0,5 mm ²	AWG 20	with no grooves	CCFA 0.5		CCFD 0.5
0,75 mm ²	AWG 18	one groove (back side)	CCFA 0.7		CCFD 0.7
1 mm ²	AWG 18	one groove	CCFA 1.0		CCFD 1.0
1,5 mm ²	AWG 16	two grooves	CCFA 1.5		CCFD 1.5
2,5 mm ²	AWG 14	three grooves	CCFA 2.5		CCFD 2.5
3 mm ²	AWG 12	one wide groove	CCFA 3.0		CCFD 3.0
4 mm ²	AWG 12	with no grooves	CCFA 4.0		CCFD 4.0
16A male contacts					
0,14-0,37 mm ²	AWG 26-22	one groove	CCMA 0.3	gold plated+	CCMD 0.3
0,5 mm ²	AWG 20	with no grooves	CCMA 0.5		CCMD 0.5
0,75 mm ²	AWG 18	one groove (back side)	CCMA 0.7		CCMD 0.7
1 mm ²	AWG 18	one groove	CCMA 1.0		CCMD 1.0
1,5 mm ²	AWG 16	two grooves	CCMA 1.5		CCMD 1.5
2,5 mm ²	AWG 14	three grooves	CCMA 2.5		CCMD 2.5
3 mm ²	AWG 12	one wide groove	CCMA 3.0		CCMD 3.0
4 mm ²	AWG 12	with no grooves	CCMA 4.0		CCMD 4.0
16A male crimp contacts for advanced opening					
0,5 mm ²	AWG 20	with no grooves	CC 0.5 AN		
0,75 mm ²	AWG 18	one groove (back side)	CC 0.7 AN		
1 mm ²	AWG 18	one groove	CC 1.0 AN		
1,5 mm ²	AWG 16	two grooves	CC 1.5 AN		
2,5 mm ²	AWG 14	three grooves	CC 2.5 AN		
10A female contacts					
0,14-0,37 mm ²	AWG 26-22	identification No. 1		silver plated	C DFA 0.3
0,5 mm ²	AWG 20	identification No. 2			C DFA 0.5
0,75 mm ²	AWG 18	identification No. ②			C DFA 0.7
1 mm ²	AWG 18	identification No. 3			C DFA 1.0
1,5 mm ²	AWG 16	identification No. 4			C DFA 1.5
2,5 mm ²	AWG 14	identification No. 5		C DFA 2.5	
10A male contacts					
0,14-0,37 mm ²	AWG 26-22	identification No. 1		gold plated+	C DMA 0.3
0,5 mm ²	AWG 20	identification No. 2			C DMA 0.5
0,75 mm ²	AWG 18	identification No. ②			C DMA 0.7
1 mm ²	AWG 18	identification No. 3			C DMA 1.0
1,5 mm ²	AWG 16	identification No. 4			C DMA 1.5
2,5 mm ²	AWG 14	identification No. 5			C DMA 2.5

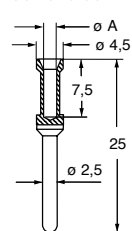
CCF, CCM and CC...AN contacts

conductor section mm ²	conductor slot ø A (mm)	conductors stripping length (mm)
0,14-0,37	0,9	7,5
0,5	1,1	7,5
0,75	1,3	7,5
1,0	1,45	7,5
1,5	1,8	7,5
2,5	2,2	7,5
3	2,55	7,5
4	2,85	7,5

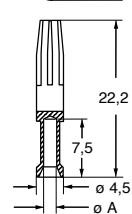
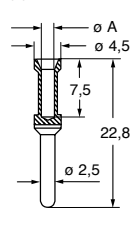
CDF and CDM contacts

conductor section mm ²	conductor slot ø A (mm)	conductors stripping length B (mm)
0,14-0,37	0,9	8
0,5	1,1	8
0,75	1,3	8
1,0	1,45	8
1,5	1,8	8
2,5	2,2	6

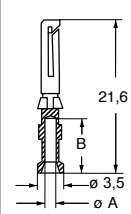
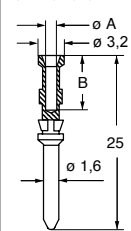
CCF and CCM



CC...AN



CDF and CDM



+ for basic or high thickness gold plating, please refer to page 675

+ for basic or high thickness gold plating, please refer to page 674

Inserts with a retainer device on crimp contacts

CX 6/12 insert has been developed **with a retainer device on crimp contacts**.

This layout enables the wires to be connected to the socket and plug insert removable contacts by crimping them with a crimp tool and its locating turret.

The crimp connection is insured and is **extremely resistant even to the most insidious strains**, such as vibrations.



SUM-UP

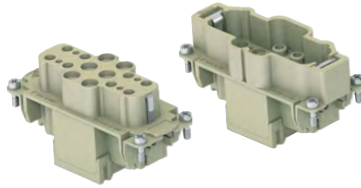
- ☑ **Crimp connection**
- ☑ **Great resistance to strong vibrations**
- ☑ **For wires: up to 10 mm² (AWG 8)**
- ☑ **Auxiliary crimp contacts: silver or gold plated**

Inserts series		CX 6/12	
No. of poles	main contact	6 + ⊕ (40A)	
	auxiliary contacts	12 (10A)	
rated current		40A	10A
EN 61984 pollution degree 3	rated voltage	690V	230V/400V
	rated impulse withstand voltage	8kV	4kV
	pollution degree	3	3
contact resistance		≤ 0,3 mΩ (40A) ≤ 1 mΩ (16A)	
insulation resistance		≥ 10 GΩ	
ambient temperature limit (°C)	min	-40 °C	
	max	+125 °C	
degree of protection	with enclosures (according to version)	IP65, IP66/IP69, IP66/IP67/IP69, IP66/IP68/IP69	
	without enclosures (in mated condition)	IP20 (IPXXB)	
conductor connections		crimp	
conductor cross-section	mm ²	1,5 10	
	AWG	16 - 8	
conductor cross-section (CC contact series)	mm ²	0,14 2,5	
	AWG	26 - 14	
CX/CC stripping length	mm	8 / 9 / 15	
mechanical endurance (mating cycles)		≥ 500	

CX 6 poles (40A - 690V) + 12 poles (10A - 230/400V) + ⊕

enclosures: size "77.27"	page:
C-TYPE IP65/IP66	402 - 411
C7 IP67, two levers	439 - 440
V-TYPE IP65/IP66, single lever	454 - 458
BIG hoods	470 - 471
T-TYPE IP65 insulating	484 - 485
T-TYPE / W IP66/IP69 insulating	491
HYGIENIC T-TYPE / H IP66/IP69	503
HYGIENIC T-TYPE / C IP66/IP69, -50 °C	508
W-TYPE for aggressive environments	523
E-Xtreme® corrosion proof	534 - 535, 544, 554 - 555
EMC	580
Central lever	609 - 611
LS-TYPE	622 - 623
IP68	640 - 643
panel supports: COB	page: 652 - 653

inserts, crimp connections



40A and 10A crimp contacts silver and gold plated



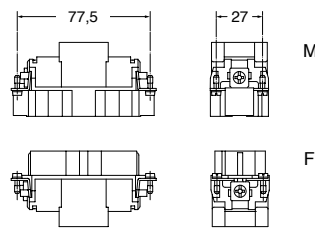
description	part No.	part No
-------------	----------	---------

without contacts (to be ordered separately)
female inserts for female contacts
male inserts for male contacts

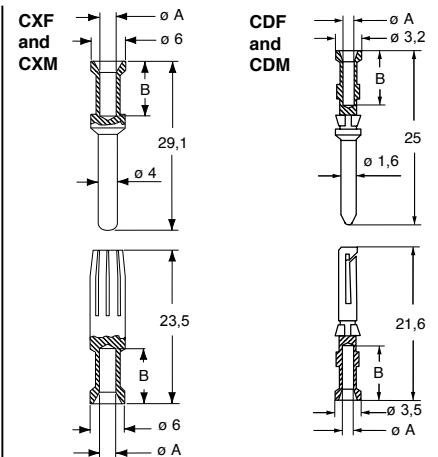
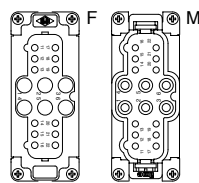
CXF 6/12
CXM 6/12

<p>40A female crimp contacts</p> <table border="0"> <tr><td>1,5 mm²</td><td>AWG 16</td></tr> <tr><td>2,5 mm²</td><td>AWG 14</td></tr> <tr><td>4 mm²</td><td>AWG 12</td></tr> <tr><td>6 mm²</td><td>AWG 10</td></tr> <tr><td>10 mm²</td><td>AWG 8</td></tr> </table> <p>40A male crimp contacts</p> <table border="0"> <tr><td>1,5 mm²</td><td>AWG 16</td></tr> <tr><td>2,5 mm²</td><td>AWG 14</td></tr> <tr><td>4 mm²</td><td>AWG 12</td></tr> <tr><td>6 mm²</td><td>AWG 10</td></tr> <tr><td>10 mm²</td><td>AWG 8</td></tr> </table> <p>10A female contacts</p> <table border="0"> <tr><td>0,14-0,37 mm²</td><td>AWG 26-22</td><td>identification No. 1</td></tr> <tr><td>0,5 mm²</td><td>AWG 20</td><td>identification No. 2</td></tr> <tr><td>0,75 mm²</td><td>AWG 18</td><td>identification No. ②</td></tr> <tr><td>1 mm²</td><td>AWG 18</td><td>identification No. 3</td></tr> <tr><td>1,5 mm²</td><td>AWG 16</td><td>identification No. 4</td></tr> <tr><td>2,5 mm²</td><td>AWG 14</td><td>identification No. 5</td></tr> </table> <p>10A male contacts</p> <table border="0"> <tr><td>0,14-0,37 mm²</td><td>AWG 26-22</td><td>identification No. 1</td></tr> <tr><td>0,5 mm²</td><td>AWG 20</td><td>identification No. 2</td></tr> <tr><td>0,75 mm²</td><td>AWG 18</td><td>identification No. ②</td></tr> <tr><td>1 mm²</td><td>AWG 18</td><td>identification No. 3</td></tr> <tr><td>1,5 mm²</td><td>AWG 16</td><td>identification No. 4</td></tr> <tr><td>2,5 mm²</td><td>AWG 14</td><td>identification No. 5</td></tr> </table>	1,5 mm ²	AWG 16	2,5 mm ²	AWG 14	4 mm ²	AWG 12	6 mm ²	AWG 10	10 mm ²	AWG 8	1,5 mm ²	AWG 16	2,5 mm ²	AWG 14	4 mm ²	AWG 12	6 mm ²	AWG 10	10 mm ²	AWG 8	0,14-0,37 mm ²	AWG 26-22	identification No. 1	0,5 mm ²	AWG 20	identification No. 2	0,75 mm ²	AWG 18	identification No. ②	1 mm ²	AWG 18	identification No. 3	1,5 mm ²	AWG 16	identification No. 4	2,5 mm ²	AWG 14	identification No. 5	0,14-0,37 mm ²	AWG 26-22	identification No. 1	0,5 mm ²	AWG 20	identification No. 2	0,75 mm ²	AWG 18	identification No. ②	1 mm ²	AWG 18	identification No. 3	1,5 mm ²	AWG 16	identification No. 4	2,5 mm ²	AWG 14	identification No. 5	<p>CXFA 1.5 CXFA 2.5 CXFA 4.0 CXFA 6.0 CXFA 10</p> <p>CXMA 1.5 CXMA 2.5 CXMA 4.0 CXMA 6.0 CXMA 10</p> <p>CDFA 0.3 CDFA 0.5 CDFA 0.7 CDFA 1.0 CDFA 1.5 CDFA 2.5</p> <p>CDMA 0.3 CDMA 0.5 CDMA 0.7 CDMA 1.0 CDMA 1.5 CDMA 2.5</p>	<p>silver plated</p> <p>* for basic or high thickness gold plating, please refer to page 674</p> <p>gold plated+</p> <p>CDFD 0.3 CDFD 0.5 CDFD 0.7 CDFD 1.0 CDFD 1.5 CDFD 2.5</p> <p>CDMD 0.3 CDMD 0.5 CDMD 0.7 CDMD 1.0 CDMD 1.5 CDMD 2.5</p>
1,5 mm ²	AWG 16																																																									
2,5 mm ²	AWG 14																																																									
4 mm ²	AWG 12																																																									
6 mm ²	AWG 10																																																									
10 mm ²	AWG 8																																																									
1,5 mm ²	AWG 16																																																									
2,5 mm ²	AWG 14																																																									
4 mm ²	AWG 12																																																									
6 mm ²	AWG 10																																																									
10 mm ²	AWG 8																																																									
0,14-0,37 mm ²	AWG 26-22	identification No. 1																																																								
0,5 mm ²	AWG 20	identification No. 2																																																								
0,75 mm ²	AWG 18	identification No. ②																																																								
1 mm ²	AWG 18	identification No. 3																																																								
1,5 mm ²	AWG 16	identification No. 4																																																								
2,5 mm ²	AWG 14	identification No. 5																																																								
0,14-0,37 mm ²	AWG 26-22	identification No. 1																																																								
0,5 mm ²	AWG 20	identification No. 2																																																								
0,75 mm ²	AWG 18	identification No. ②																																																								
1 mm ²	AWG 18	identification No. 3																																																								
1,5 mm ²	AWG 16	identification No. 4																																																								
2,5 mm ²	AWG 14	identification No. 5																																																								

- characteristics according to EN 61984:
40A 690V 8kV 3
10A 230/400V 4kV 3
- **certified**
- insulation resistance: $\geq 10 \text{ G}\Omega$
- ambient temperature limit: $-40 \text{ }^\circ\text{C} \dots +125 \text{ }^\circ\text{C}$
- made of self-extinguishing thermoplastic resin UL 94V-0
- mechanical life: ≥ 500 cycles
- contact resistance:
 $\leq 0,3 \text{ m}\Omega$ (6 poles)
 $\leq 1 \text{ m}\Omega$ (12 poles)
- cable diameter: up to 7,5 mm
- contact section: up to 10 mm²
- **it is recommended to crimp the contacts with crimping tools homologated by ILME** (please see the crimping tool section 40A contacts, CXF, CXM series and 10A contacts CDF, CDM series on pages 708 - 741
- for max. current load see the connector inserts derating diagram below; for more information see page 28

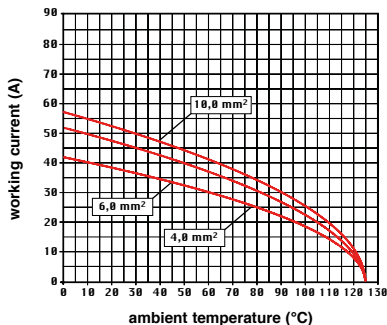


contacts side (front view)



CXF and CXM contacts		
conductor section mm ²	conductor slot ø A (mm)	conductors stripping length B (mm)
1,5	1,8	9
2,5	2,2	9
4	2,85	9,6
6	3,5	9,6
10	4,3	15
CDF and CDM contacts		
conductor section mm ²	conductor slot ø A (mm)	conductors stripping length B (mm)
0,14-0,37	0,9	8
0,5	1,1	8
0,75	1,3	8
1,0	1,45	8
1,5	1,8	8
2,5	2,2	6

CX 6/12 power poles connector inserts
Maximum current load derating diagram



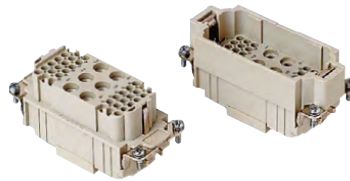
CX 6 poles (40A - 690V) + 36 poles (10A - 160V) + ⊕

enclosures: size "77.27"	page:
C-TYPE IP65/IP66	402 - 411
C7 IP67, two levers	439 - 440
V-TYPE IP65/IP66, single lever	454 - 458
BIG hoods	470 - 471
T-TYPE IP65 insulating	484 - 485
T-TYPE / W IP66/IP69 insulating	491
HYGIENIC T-TYPE / H IP66/IP69	503
HYGIENIC T-TYPE / C IP66/IP69, -50 °C	508
W-TYPE for aggressive environments	523
E-Xtreme® corrosion proof	534 - 535, 544, 554 - 555
EMC	580
Central lever	609 - 611
LS-TYPE	622 - 623
IP68	640 - 643

panel supports:	page:
COB	652 - 653

- PCBs interface, see article CIF 2.4 (10A contacts)

inserts, crimp connections



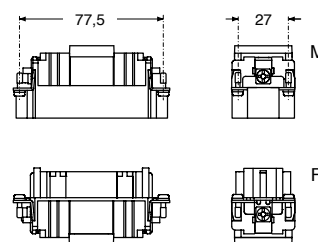
40A and 10A crimp contacts silver and gold plated



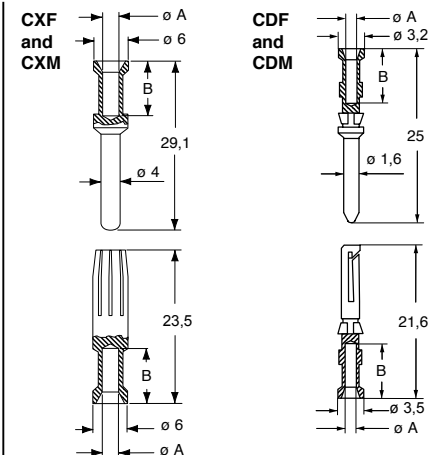
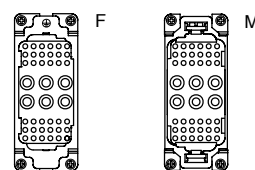
description	part No.	part No
without contacts (to be ordered separately)		
female inserts for female contacts	CXF 6/36	
male inserts for male contacts	CXM 6/36	
40A female crimp contacts		CXFA 1.5 CXFA 2.5 CXFA 4.0 CXFA 6.0
1,5 mm ² AWG 16		silver plated
2,5 mm ² AWG 14		
4 mm ² AWG 12		
6 mm ² AWG 10		
40A male crimp contacts		CXMA 1.5 CXMA 2.5 CXMA 4.0 CXMA 6.0
1,5 mm ² AWG 16		gold plated+
2,5 mm ² AWG 14		
4 mm ² AWG 12		
6 mm ² AWG 10		
10A female contacts		C DFA 0.3 C DFA 0.5 C DFA 0.7 C DFA 1.0 C DFA 1.5 C DFA 2.5
0,14-0,37 mm ² AWG 26-22 identification No. 1		gold plated+
0,5 mm ² AWG 20 identification No. 2		
0,75 mm ² AWG 18 identification No. ②		
1 mm ² AWG 18 identification No. 3		
1,5 mm ² AWG 16 identification No. 4		
2,5 mm ² AWG 14 identification No. 5		
10A male contacts		C DMA 0.3 C DMA 0.5 C DMA 0.7 C DMA 1.0 C DMA 1.5 C DMA 2.5
0,14-0,37 mm ² AWG 26-22 identification No. 1		gold plated+
0,5 mm ² AWG 20 identification No. 2		
0,75 mm ² AWG 18 identification No. ②		
1 mm ² AWG 18 identification No. 3		
1,5 mm ² AWG 16 identification No. 4		
2,5 mm ² AWG 14 identification No. 5		

* for basic or high thickness gold plating, please refer to page 674

- characteristics according to EN 61984:
- 40A 690V 8kV 3**
- 10A 160V 2,5kV 3**
- 10A 250V 4kV 2**
- certified
- rated voltage according to UL/CSA: 600V
- insulation resistance: ≥ 10 GΩ
- ambient temperature limit: -40 °C ... +125 °C
- made of self-extinguishing thermoplastic resin UL 94V-0
- mechanical life: ≥ 500 cycles
- contact resistance: ≤ 0,3 mΩ (6 poles), ≤ 1 mΩ (36 poles)
- for max. current load see the connector inserts derating diagram below; for more information see page 28



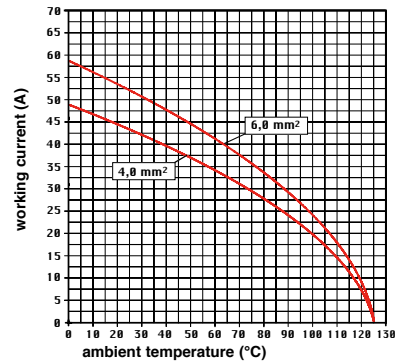
contacts side (front view)



CXF and CXM contacts		
conductor section mm ²	conductor slot ø A (mm)	conductors stripping length B (mm)
1,5	1,8	9
2,5	2,2	9
4	2,85	9,6
6	3,5	9,6

CDF and CDM contacts		
conductor section mm ²	conductor slot ø A (mm)	conductors stripping length B (mm)
0,14-0,37	0,9	8
0,5	1,1	8
0,75	1,3	8
1,0	1,45	8
1,5	1,8	8
2,5	2,2	6

CX 6/36 power poles connector inserts
Maximum current load derating diagram



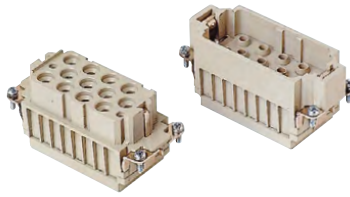
- it is recommended to crimp the contacts with crimping tools homologated by ILME (please see the crimping tool section 40A contacts, CXF, CXM series and 10A contacts CDF, CDM series on pages 708 - 741

CX 6/36

CX 12 poles (40A - 690V) + 2 poles (10A - 250V) + ⊕

enclosures: size "77.27"	page:
C-TYPE IP65/IP66	402 - 411
C7 IP67, two levers	439 - 440
V-TYPE IP65/IP66, single lever	454 - 458
BIG hoods	470 - 471
T-TYPE IP65 insulating	484 - 485
T-TYPE / W IP66/IP69 insulating	491
HYGIENIC T-TYPE / H IP66/IP69	503
HYGIENIC T-TYPE / C IP66/IP69, -50 °C	508
W-TYPE for aggressive environments	523
E-Xtreme® corrosion proof	534 - 535, 544, 554 - 555
EMC	580
Central lever	609 - 611
LS-TYPE	622 - 623
IP68	640 - 643
panel supports: COB	page: 652 - 653

inserts, crimp connections



40A and 10A crimp contacts silver and gold plated



description	part No.	part No
-------------	----------	---------

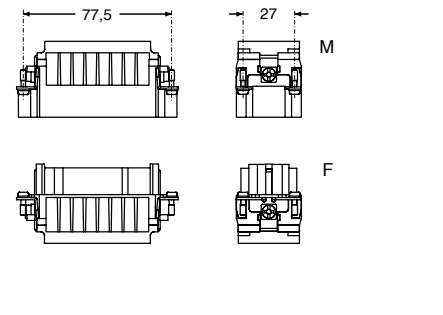
without contacts (to be ordered separately)
female inserts for female contacts
male inserts for male contacts

CXF 12/2
CXM 12/2

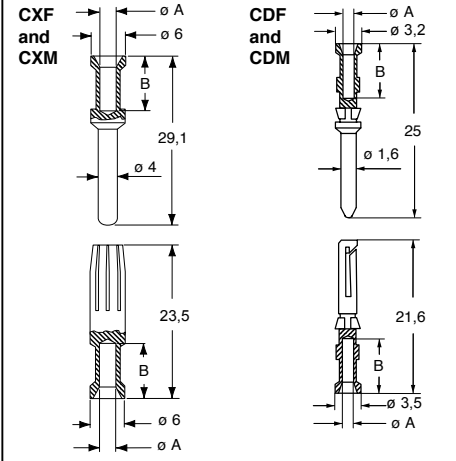
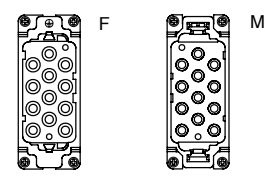
<p>40A female crimp contacts</p> <p>1,5 mm² AWG 16</p> <p>2,5 mm² AWG 14</p> <p>4 mm² AWG 12</p> <p>6 mm² AWG 10</p>		
<p>40A male crimp contacts</p> <p>1,5 mm² AWG 16</p> <p>2,5 mm² AWG 14</p> <p>4 mm² AWG 12</p> <p>6 mm² AWG 10</p>	<p>CXFA 1.5</p> <p>CXFA 2.5</p> <p>CXFA 4.0</p> <p>CXFA 6.0</p>	silver plated
<p>10A female contacts</p> <p>0,14-0,37 mm² AWG 26-22 identification No. 1</p> <p>0,5 mm² AWG 20 identification No. 2</p> <p>0,75 mm² AWG 18 identification No. ②</p> <p>1 mm² AWG 18 identification No. 3</p> <p>1,5 mm² AWG 16 identification No. 4</p> <p>2,5 mm² AWG 14 identification No. 5</p>	<p>CDFA 0.3</p> <p>CDFA 0.5</p> <p>CDFA 0.7</p> <p>CDFA 1.0</p> <p>CDFA 1.5</p> <p>CDFA 2.5</p>	gold plated+*
<p>10A male contacts</p> <p>0,14-0,37 mm² AWG 26-22 identification No. 1</p> <p>0,5 mm² AWG 20 identification No. 2</p> <p>0,75 mm² AWG 18 identification No. ②</p> <p>1 mm² AWG 18 identification No. 3</p> <p>1,5 mm² AWG 16 identification No. 4</p> <p>2,5 mm² AWG 14 identification No. 5</p>	<p>CDMA 0.3</p> <p>CDMA 0.5</p> <p>CDMA 0.7</p> <p>CDMA 1.0</p> <p>CDMA 1.5</p> <p>CDMA 2.5</p>	<p>CDMD 0.3</p> <p>CDMD 0.5</p> <p>CDMD 0.7</p> <p>CDMD 1.0</p> <p>CDMD 1.5</p> <p>CDMD 2.5</p>

* for basic or high thickness gold plating, please refer to page 674

- characteristics according to EN 61984:
- 40A 690V 8kV 3**
- 10A 250V 4kV 3**
- certified
- rated voltage according to UL/CSA: 600V
- insulation resistance: ≥ 10 GΩ
- ambient temperature limit: -40 °C ... +125 °C
- made of self-extinguishing thermoplastic resin UL 94V-0
- mechanical life: ≥ 500 cycles
- contact resistance: ≤ 0,3 mΩ (12 poles), ≤ 1 mΩ (2 poles)
- for max. current load see the connector inserts derating diagram below; for more information see page 28



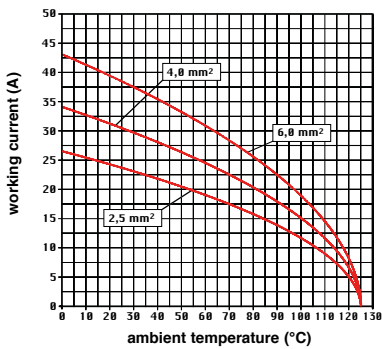
contacts side (front view)



CXF and CXM contacts		
conductor section mm ²	conductor slot ø A (mm)	conductors stripping length B (mm)
1,5	1,8	9
2,5	2,2	9
4	2,85	9,6
6	3,5	9,6

CDF and CDM contacts		
conductor section mm ²	conductor slot ø A (mm)	conductors stripping length B (mm)
0,14-0,37	0,9	8
0,5	1,1	8
0,75	1,3	8
1,0	1,45	8
1,5	1,8	8
2,5	2,2	6

CX 12/2 power poles connector inserts
Maximum current load derating diagram



- it is recommended to crimp the contacts with crimping tools homologated by ILME (please see the crimping tool section 40A contacts, CXF, CXM series and 10A contacts CDF, CDM series on pages 708 - 741

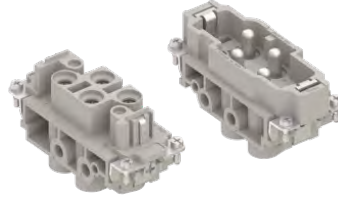
CX 12/2

Inserts

CX 4 poles (80A - 830V) + ⊕

enclosures: size "77.27"	page:
C-TYPE IP65/IP66	402 - 411
C7 IP67, two levers	439 - 440
V-TYPE IP65/IP66, single lever	454 - 458
BIG hoods	470 - 471
T-TYPE IP65 insulating	484 - 485
T-TYPE / W IP66/IP69 insulating	491
HYGIENIC T-TYPE / H IP66/IP69	503
HYGIENIC T-TYPE / C IP66/IP69, -50 °C	508
W-TYPE for aggressive environments	523
E-Xtreme® corrosion proof	534 - 535, 544, 554 - 555
EMC	580
Central lever	609 - 611
LS-TYPE	622 - 623
IP68	640 - 643
panel supports:	page:
COB	652 - 653

inserts,
screw terminal connection

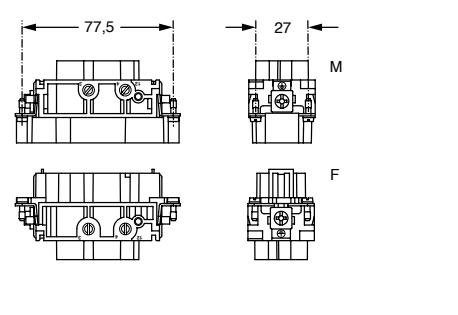


Q RATING 830V
Q SILVER PLATED CONTACTS

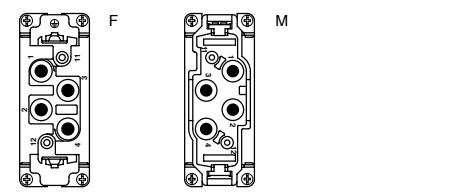
CX 4/0

description	part No.
female inserts with female contacts	CXF 4/0
male inserts with male contacts	CXM 4/0

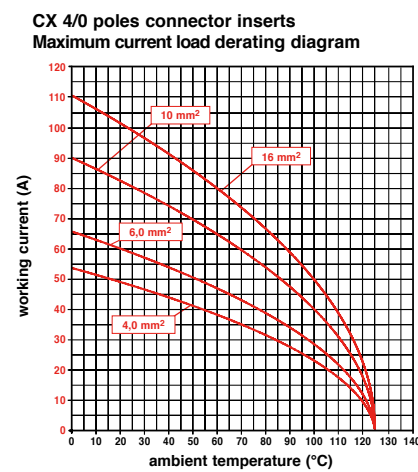
- characteristics according to EN 61984:
- 80A 830V 8kV 3**
- certified
- rated voltage according to UL/CSA: 600V
- insulation resistance: ≥ 10 GΩ
- ambient temperature limit: -40 °C ... +125 °C
- made of self-extinguishing thermoplastic resin
UL 94V-0
- mechanical life: ≥ 500 cycles
- contact resistance: ≤ 0,3 mΩ
- for max. current load see the connector inserts derating diagram below; for more information see page 28



contacts side (front view)



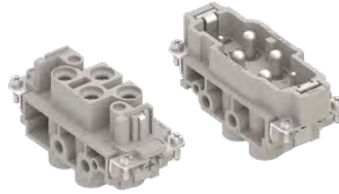
- 80A contacts**
- without plate for section conductors:
4 - 16 mm² - AWG 12 - 6
 - conductors stripping length: 14 mm
 - terminal screw torque: 2,5 Nm (22.1 lb.in),
for more information see page 20 and 21



CX 4 poles (80A - 830V) + 2 poles (16A - 400V) + ⊕

enclosures: size "77.27"	page:
C-TYPE IP65/IP66	402 - 411
C7 IP67, two levers	439 - 440
V-TYPE IP65/IP66, single lever	454 - 458
BIG hoods	470 - 471
T-TYPE IP65 insulating	484 - 485
T-TYPE / W IP66/IP69 insulating	491
HYGIENIC T-TYPE / H IP66/IP69	503
HYGIENIC T-TYPE / C IP66/IP69, -50 °C	508
W-TYPE for aggressive environments	523
E-Xtreme® corrosion proof	534 - 535, 544, 554 - 555
EMC	580
Central lever	609 - 611
LS-TYPE	622 - 623
IP68	640 - 643
panel supports: COB	page: 652 - 653

inserts,
screw terminal connection



RATING 830V
Q SILVER PLATED CONTACTS

description	part No.
female inserts with female contacts	CXF 4/2
male inserts with male contacts	CXM 4/2

- characteristics according to EN 61984:

80A 830V 8kV 3
16A 400V 6kV 3
16A 400/690V 6kV 2

- certified

- rated voltage according to UL/CSA: 600V

- insulation resistance: $\geq 10 \text{ G}\Omega$

- ambient temperature limit: $-40 \text{ }^\circ\text{C} \dots +125 \text{ }^\circ\text{C}$

- made of self-extinguishing thermoplastic resin UL 94V-0

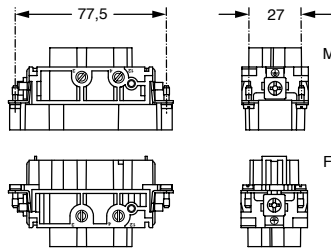
- mechanical life: ≥ 500 cycles

- contact resistance:

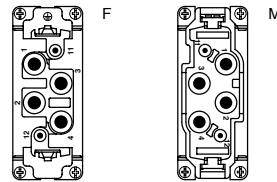
$\leq 0,3 \text{ m}\Omega$ (4 poles)

$\leq 1 \text{ m}\Omega$ (2 poles)

- for max. current load see the connector inserts derating diagrams below; for more information see page 28



contacts side (front view)



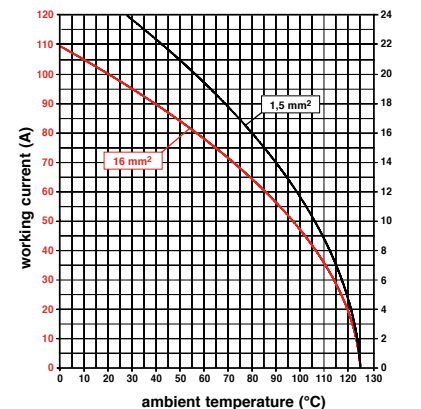
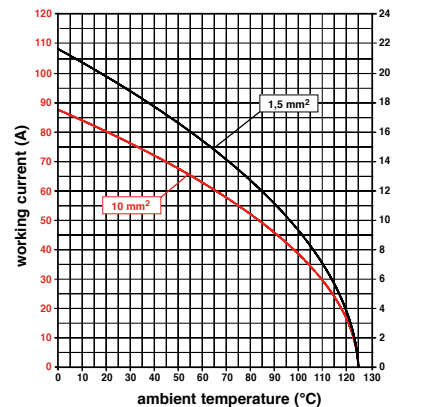
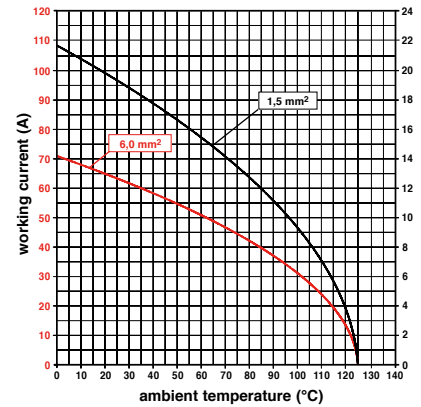
80A contacts

- without plate for section conductors: 4 - 16 mm² - AWG 12 - 6
- conductors stripping length: 14 mm
- terminal screw torque: 2,5 Nm (22.1 lb.in), for more information see page 20 and 21

16A contacts

- without plate for section conductors: 0,25 - 2,5 mm² - AWG 24 - 14
- conductors stripping length: 7 mm
- terminal screw torque: 0,5 Nm (4.4 lb.in), for more information see page 20 and 21

CX 4/2 poles connector inserts
Maximum current load derating diagram

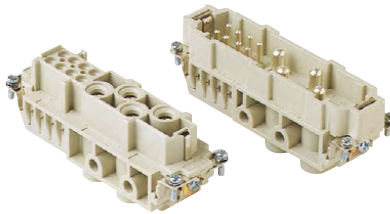


NOTE

Any cross-sectional area on the signal side higher than that combined to the relevant cross-sectional area on the power side may be used, but with the derating curve for the cross-sectional area given as combined to that on the power side.

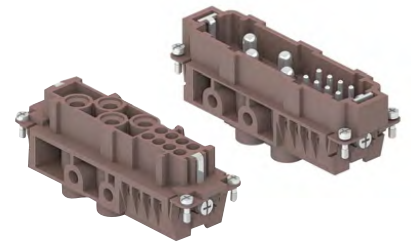
enclosures: size "104.27"	page:
CX 4/8:	
C-TYPE IP65/IP66	412 - 423
C7 IP67, two levers	441 - 442
V-TYPE IP65/IP66, single lever	459 - 463
BIG hoods	472 - 473
T-TYPE IP65 insulating	486 - 487
T-TYPE / W IP66/IP69 insulating	492
HYGIENIC T-TYPE / H IP66/IP69	504
HYGIENIC T-TYPE / C IP66/IP69, -50 °C	509
W-TYPE for aggressive environments	524
E-Xtreme® corrosion proof	536 - 537, 545, 556 - 557
EMC	581
Central lever	612 - 614
LS-TYPE	624 - 625
IP68	644 - 647
panel supports: COB	652 - 653
CX 4/8 RY: For 180 °C	589

inserts,
screw terminal connection



Q SILVER PLATED CONTACTS

inserts,
screw terminal connection



180 °C

Q SILVER PLATED CONTACTS

description	part No.	part No
-------------	----------	---------

female inserts with female contacts
male inserts with male contacts

CXF 4/8
CXM 4/8

use in temperatures up to 180 °C
female inserts with female contacts
male inserts with male contacts

CXF 4/8 RY
CXM 4/8 RY

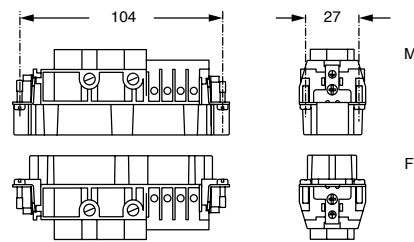
- characteristics according to EN 61984:

- 80A 400V 6kV 3**
- 80A 400/690V 6kV 2**
- 16A 230/400V 4kV 3**
- 16A 400V 4kV 2**

- certified

- rated voltage according to UL/CSA: 600V
- insulation resistance: ≥ 10 G Ω
- ambient temperature limit: -40 °C ... +125 °C (CX)
- ambient temperature limit: -40 °C ... +180 °C (CX...RY)
- made of self-extinguishing thermoplastic resin UL 94V-0
- mechanical life: ≥ 500 cycles
- contact resistance: $\leq 0,3$ m Ω (4 poles)
 ≤ 1 m Ω (8 poles)
- for max. current load see the connector inserts derating diagrams below; for more information see page 28

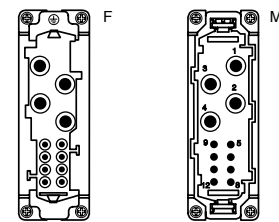
CX - CX..RY



80A contacts

- without plate for section conductors: 4 - 16 mm² - AWG 12 - 6
- conductors stripping length: 14 mm
- terminal screw torque: 2,5 Nm (22.1 lb.in), for more information see page 20 and 21

contacts side (front view)



16A contacts

- with plate for section conductors: 0,75 - 2,5 mm² - AWG 18 - 14
- conductors stripping length: 7 mm
- terminal screw torque: 0,5 Nm (4.4 lb.in), for more information see page 20 and 21

The derating curves for the connector's **power** (red) and **signal** (black) portions provided in the diagram are valid for the following combinations of cross-sectional area on the power side and on the signal side:

- power 4 mm² with signal 1 mm²;
- power 6 mm² with signal 1 mm²;
- power 10 mm² or 6 mm² with signal 1,5 mm²;
- power 16 mm² with signal 2,5 mm²;

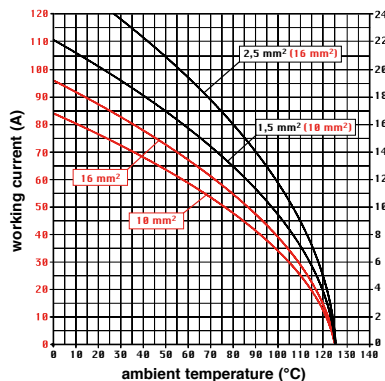
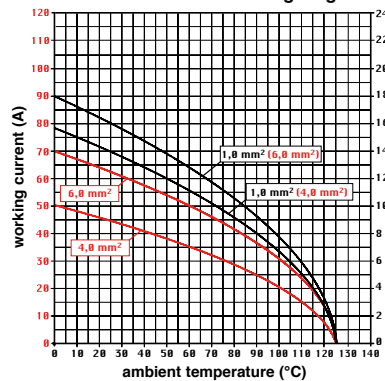
NOTE 1

Any cross-sectional area on the signal side higher than that combined to the relevant cross-sectional area on the power side may be used, but with the derating curve for the cross-sectional area given as combined to that on the power side;

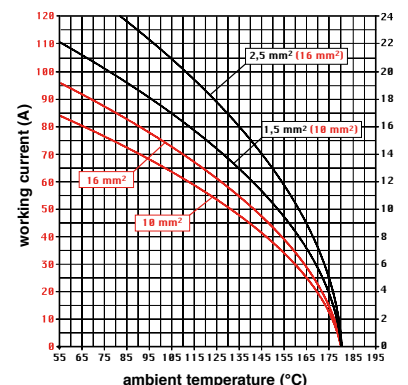
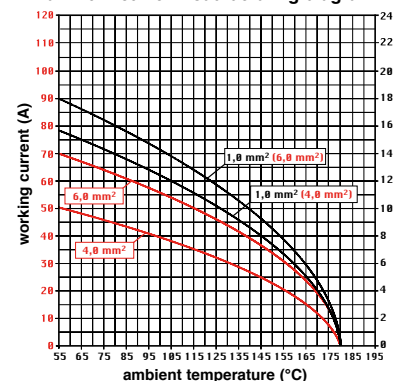
NOTE 2

Any cross-sectional area on the signal side lower than that combined to the relevant cross-sectional area on the power side (e.g. 1 mm² signal with 16 mm² power) may be used at the current indicated for the signal cross-sectional area belonging to the closest lower cross-sectional area on the power side (i.e. the 1 mm² curve combined to the 6 mm² power section)

CX 4/8 poles connector inserts
Maximum current load derating diagrams



CX..RY 4/8 poles connector inserts
Maximum current load derating diagram



CX - CX...RY 4/8