

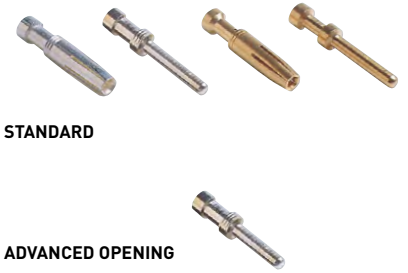
CCE 6 poles + ⊕ 16A - 500V

enclosures: size "44.27"	page:
C-TYPE IP65/IP66	387 - 392
C7 IP67, single lever	436 - 437
V-TYPE IP65/IP66, single lever	444 - 447
BIG hoods	466 - 467
T-TYPE IP65 insulating	480 - 481
T-TYPE / W IP66/IP69 insulating	489
HYGIENIC T-TYPE / H IP66/IP69	501
HYGIENIC T-TYPE / C IP66/IP69, -50 °C	506
W-TYPE for aggressive environments	521
E-Xtreme® corrosion proof	530 - 531, 542, 550 - 551
EMC	578
Central lever	603 - 605
LS-TYPE	618 - 619
IP68	632 - 635
panel supports:	page:
COB	652 - 653

inserts, crimp connections



16A crimp contacts
standard or for advanced opening
silver and gold plated



description	part No.	part No.
-------------	----------	----------

without contacts (to be ordered separately)
female inserts for female contacts
male inserts for male contacts

CCEF 06
CCEM 06

16A female contacts

0,14-0,37 mm ²	AWG 26-22	one groove
0,5 mm ²	AWG 20	with no grooves
0,75 mm ²	AWG 18	one groove (back side)
1 mm ²	AWG 18	one groove
1,5 mm ²	AWG 16	two grooves
2,5 mm ²	AWG 14	three grooves
3 mm ²	AWG 12	one wide groove
4 mm ²	AWG 12	with no grooves

CCFA 0.3
CCFA 0.5
CCFA 0.7
CCFA 1.0
CCFA 1.5
CCFA 2.5
CCFA 3.0
CCFA 4.0

silver plated

CCFD 0.3
CCFD 0.5
CCFD 0.7
CCFD 1.0
CCFD 1.5
CCFD 2.5
CCFD 3.0
CCFD 4.0

gold plated+

16A male contacts

0,14-0,37 mm ²	AWG 26-22	one groove
0,5 mm ²	AWG 20	with no grooves
0,75 mm ²	AWG 18	one groove (back side)
1 mm ²	AWG 18	one groove
1,5 mm ²	AWG 16	two grooves
2,5 mm ²	AWG 14	three grooves
3 mm ²	AWG 12	one wide groove
4 mm ²	AWG 12	with no grooves

CCMA 0.3
CCMA 0.5
CCMA 0.7
CCMA 1.0
CCMA 1.5
CCMA 2.5
CCMA 3.0
CCMA 4.0

CCMD 0.3
CCMD 0.5
CCMD 0.7
CCMD 1.0
CCMD 1.5
CCMD 2.5
CCMD 3.0
CCMD 4.0

16A male crimp contacts for advanced opening

0,5 mm ²	AWG 20	with no grooves
0,75 mm ²	AWG 18	one groove (back side)
1 mm ²	AWG 18	one groove
1,5 mm ²	AWG 16	two grooves
2,5 mm ²	AWG 14	three grooves

CC 0.5 AN
CC 0.7 AN
CC 1.0 AN
CC 1.5 AN
CC 2.5 AN

* for basic or high thickness gold plating, please refer to page 675

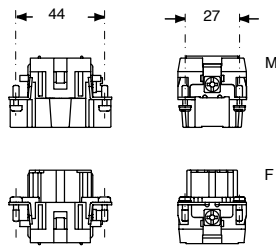
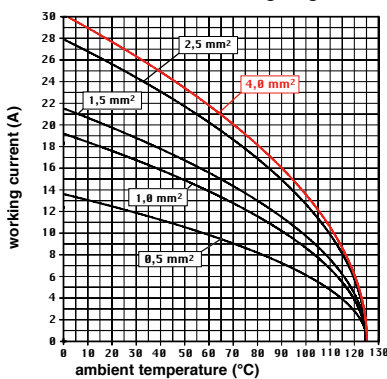
- characteristics according to EN 61984:

16A 500V 6kV 3
16A 400/690V 6kV 2

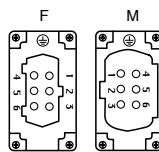
- certified

- rated voltage according to UL/CSA: 600V
- insulation resistance: ≥ 10 GΩ
- ambient temperature limit: -40 °C ... +125 °C
- made of self-extinguishing thermoplastic resin UL 94V-0
- mechanical life: ≥ 500 cycles
- contact resistance: ≤ 1 mΩ
- for max. current load see the connector inserts derating diagram below; for more information see page 28

CCE 06 poles connector inserts
Maximum current load derating diagram

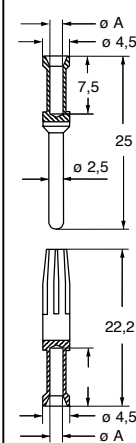


contacts side (front view)

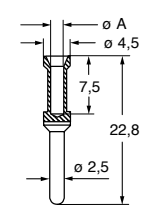


- it is recommended to crimp the contacts with crimping tools homologated by ILME (please see the crimping tool section 16A contacts, CCF, CCM and CC...AN series on pages 708 - 741)

CCF and CCM



CC...AN



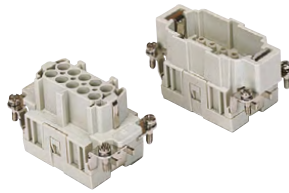
CCF, CCM and CC...AN contacts

conductor section mm ²	conductor slot ø A (mm)	conductors stripping length (mm)
0,14-0,37	0,9	7,5
0,5	1,1	7,5
0,75	1,3	7,5
1,0	1,45	7,5
1,5	1,8	7,5
2,5	2,2	7,5
3	2,55	7,5
4	2,85	7,5

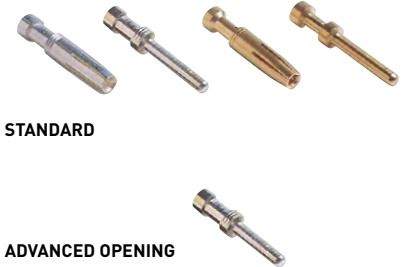
CCE 10 poles + \oplus 16A - 500V

enclosures: size "57.27"	page:
C-TYPE IP65/IP66	393 - 401
C7 IP67, two levers	438
V-TYPE IP65/IP66, single lever	448 - 453
BIG hoods	468 - 469
T-TYPE IP65 insulating	482 - 483
T-TYPE / W IP66/IP69 insulating	490
HYGIENIC T-TYPE / H IP66/IP69	502
HYGIENIC T-TYPE / C IP66/IP69, -50 °C	507
W-TYPE for aggressive environments	522
E-Xtreme® corrosion proof	532 - 533, 543, 552 - 553
EMC	579
Central lever	606 - 608
LS-TYPE	620 - 621
IP68	636 - 639
panel supports: COB	page: 652 - 653

inserts, crimp connections



16A crimp contacts
standard or for advanced opening
silver and gold plated

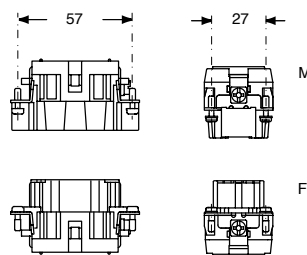


description	part No.	part No.
-------------	----------	----------

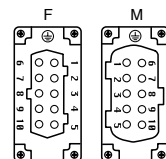
without contacts (to be ordered separately)
female inserts for female contacts **CCEF 10**
male inserts for male contacts **CCEM 10**

<p>16A female contacts</p> <table border="0"> <tr><td>0,14-0,37 mm²</td><td>AWG 26-22</td><td>one groove</td><td>CCFA 0.3</td><td>CCFD 0.3</td></tr> <tr><td>0,5 mm²</td><td>AWG 20</td><td>with no grooves</td><td>CCFA 0.5</td><td>CCFD 0.5</td></tr> <tr><td>0,75 mm²</td><td>AWG 18</td><td>one groove (back side)</td><td>CCFA 0.7</td><td>CCFD 0.7</td></tr> <tr><td>1 mm²</td><td>AWG 18</td><td>one groove</td><td>CCFA 1.0</td><td>CCFD 1.0</td></tr> <tr><td>1,5 mm²</td><td>AWG 16</td><td>two grooves</td><td>CCFA 1.5</td><td>CCFD 1.5</td></tr> <tr><td>2,5 mm²</td><td>AWG 14</td><td>three grooves</td><td>CCFA 2.5</td><td>CCFD 2.5</td></tr> <tr><td>3 mm²</td><td>AWG 12</td><td>one wide groove</td><td>CCFA 3.0</td><td>CCFD 3.0</td></tr> <tr><td>4 mm²</td><td>AWG 12</td><td>with no grooves</td><td>CCFA 4.0</td><td>CCFD 4.0</td></tr> </table> <p>16A male contacts</p> <table border="0"> <tr><td>0,14-0,37 mm²</td><td>AWG 26-22</td><td>one groove</td><td>CCMA 0.3</td><td>CCMD 0.3</td></tr> <tr><td>0,5 mm²</td><td>AWG 20</td><td>with no grooves</td><td>CCMA 0.5</td><td>CCMD 0.5</td></tr> <tr><td>0,75 mm²</td><td>AWG 18</td><td>one groove (back side)</td><td>CCMA 0.7</td><td>CCMD 0.7</td></tr> <tr><td>1 mm²</td><td>AWG 18</td><td>one groove</td><td>CCMA 1.0</td><td>CCMD 1.0</td></tr> <tr><td>1,5 mm²</td><td>AWG 16</td><td>two grooves</td><td>CCMA 1.5</td><td>CCMD 1.5</td></tr> <tr><td>2,5 mm²</td><td>AWG 14</td><td>three grooves</td><td>CCMA 2.5</td><td>CCMD 2.5</td></tr> <tr><td>3 mm²</td><td>AWG 12</td><td>one wide groove</td><td>CCMA 3.0</td><td>CCMD 3.0</td></tr> <tr><td>4 mm²</td><td>AWG 12</td><td>with no grooves</td><td>CCMA 4.0</td><td>CCMD 4.0</td></tr> </table> <p>16A male crimp contacts for advanced opening</p> <table border="0"> <tr><td>0,5 mm²</td><td>AWG 20</td><td>with no grooves</td><td>CC 0.5 AN</td><td></td></tr> <tr><td>0,75 mm²</td><td>AWG 18</td><td>one groove (back side)</td><td>CC 0.7 AN</td><td></td></tr> <tr><td>1 mm²</td><td>AWG 18</td><td>one groove</td><td>CC 1.0 AN</td><td></td></tr> <tr><td>1,5 mm²</td><td>AWG 16</td><td>two grooves</td><td>CC 1.5 AN</td><td></td></tr> <tr><td>2,5 mm²</td><td>AWG 14</td><td>three grooves</td><td>CC 2.5 AN</td><td></td></tr> </table>	0,14-0,37 mm ²	AWG 26-22	one groove	CCFA 0.3	CCFD 0.3	0,5 mm ²	AWG 20	with no grooves	CCFA 0.5	CCFD 0.5	0,75 mm ²	AWG 18	one groove (back side)	CCFA 0.7	CCFD 0.7	1 mm ²	AWG 18	one groove	CCFA 1.0	CCFD 1.0	1,5 mm ²	AWG 16	two grooves	CCFA 1.5	CCFD 1.5	2,5 mm ²	AWG 14	three grooves	CCFA 2.5	CCFD 2.5	3 mm ²	AWG 12	one wide groove	CCFA 3.0	CCFD 3.0	4 mm ²	AWG 12	with no grooves	CCFA 4.0	CCFD 4.0	0,14-0,37 mm ²	AWG 26-22	one groove	CCMA 0.3	CCMD 0.3	0,5 mm ²	AWG 20	with no grooves	CCMA 0.5	CCMD 0.5	0,75 mm ²	AWG 18	one groove (back side)	CCMA 0.7	CCMD 0.7	1 mm ²	AWG 18	one groove	CCMA 1.0	CCMD 1.0	1,5 mm ²	AWG 16	two grooves	CCMA 1.5	CCMD 1.5	2,5 mm ²	AWG 14	three grooves	CCMA 2.5	CCMD 2.5	3 mm ²	AWG 12	one wide groove	CCMA 3.0	CCMD 3.0	4 mm ²	AWG 12	with no grooves	CCMA 4.0	CCMD 4.0	0,5 mm ²	AWG 20	with no grooves	CC 0.5 AN		0,75 mm ²	AWG 18	one groove (back side)	CC 0.7 AN		1 mm ²	AWG 18	one groove	CC 1.0 AN		1,5 mm ²	AWG 16	two grooves	CC 1.5 AN		2,5 mm ²	AWG 14	three grooves	CC 2.5 AN		<p>silver plated</p> <p>gold plated+</p>	<p>+ for basic or high thickness gold plating, please refer to page 675</p>
0,14-0,37 mm ²	AWG 26-22	one groove	CCFA 0.3	CCFD 0.3																																																																																																							
0,5 mm ²	AWG 20	with no grooves	CCFA 0.5	CCFD 0.5																																																																																																							
0,75 mm ²	AWG 18	one groove (back side)	CCFA 0.7	CCFD 0.7																																																																																																							
1 mm ²	AWG 18	one groove	CCFA 1.0	CCFD 1.0																																																																																																							
1,5 mm ²	AWG 16	two grooves	CCFA 1.5	CCFD 1.5																																																																																																							
2,5 mm ²	AWG 14	three grooves	CCFA 2.5	CCFD 2.5																																																																																																							
3 mm ²	AWG 12	one wide groove	CCFA 3.0	CCFD 3.0																																																																																																							
4 mm ²	AWG 12	with no grooves	CCFA 4.0	CCFD 4.0																																																																																																							
0,14-0,37 mm ²	AWG 26-22	one groove	CCMA 0.3	CCMD 0.3																																																																																																							
0,5 mm ²	AWG 20	with no grooves	CCMA 0.5	CCMD 0.5																																																																																																							
0,75 mm ²	AWG 18	one groove (back side)	CCMA 0.7	CCMD 0.7																																																																																																							
1 mm ²	AWG 18	one groove	CCMA 1.0	CCMD 1.0																																																																																																							
1,5 mm ²	AWG 16	two grooves	CCMA 1.5	CCMD 1.5																																																																																																							
2,5 mm ²	AWG 14	three grooves	CCMA 2.5	CCMD 2.5																																																																																																							
3 mm ²	AWG 12	one wide groove	CCMA 3.0	CCMD 3.0																																																																																																							
4 mm ²	AWG 12	with no grooves	CCMA 4.0	CCMD 4.0																																																																																																							
0,5 mm ²	AWG 20	with no grooves	CC 0.5 AN																																																																																																								
0,75 mm ²	AWG 18	one groove (back side)	CC 0.7 AN																																																																																																								
1 mm ²	AWG 18	one groove	CC 1.0 AN																																																																																																								
1,5 mm ²	AWG 16	two grooves	CC 1.5 AN																																																																																																								
2,5 mm ²	AWG 14	three grooves	CC 2.5 AN																																																																																																								

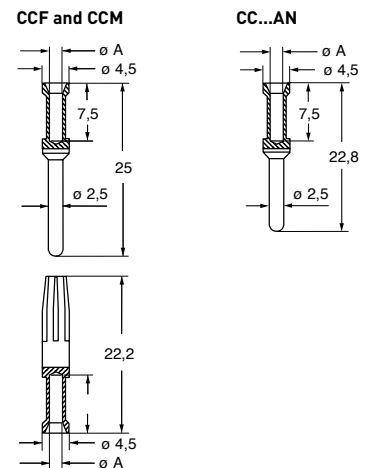
- characteristics according to EN 61984:
16A 500V 6kV 3
16A 400/690V 6kV 2
- certified
- rated voltage according to UL/CSA: 600V
- insulation resistance: $\geq 10 \text{ G}\Omega$
- ambient temperature limit: -40 °C ... +125 °C
- made of self-extinguishing thermoplastic resin UL 94V-0
- mechanical life: ≥ 500 cycles
- contact resistance: $\leq 1 \text{ m}\Omega$
- for max. current load see the connector inserts derating diagram below; for more information see page 28



contacts side (front view)

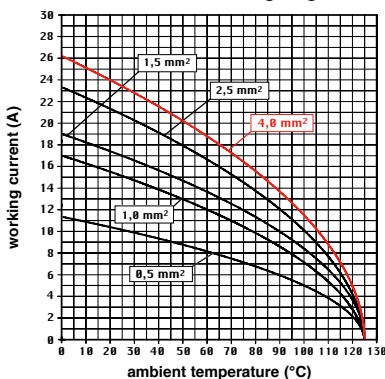


- it is recommended to crimp the contacts with crimping tools homologated by ILME (please see the crimping tool section 16A contacts, CCF, CCM and CC...AN series on pages 708 - 741)



CCF, CCM and CC...AN contacts		
conductor section mm ²	conductor slot ϕ A (mm)	conductors stripping length (mm)
0,14-0,37	0,9	7,5
0,5	1,1	7,5
0,75	1,3	7,5
1,0	1,45	7,5
1,5	1,8	7,5
2,5	2,2	7,5
3	2,55	7,5
4	2,85	7,5

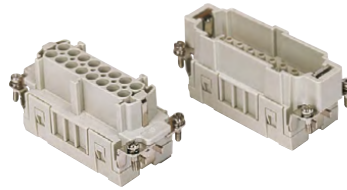
CCE 10 poles connector inserts
Maximum current load derating diagram



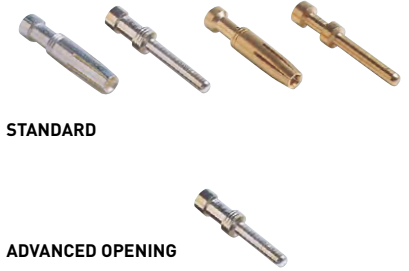
CCE 16 poles + ⊕ 16A - 500V

enclosures: size "77.27"	page:
C-TYPE IP65/IP66	402 - 411
C7 IP67, two levers	439 - 440
V-TYPE IP65/IP66, single lever	454 - 458
BIG hoods	470 - 471
T-TYPE IP65 insulating	484 - 485
T-TYPE / W IP66/IP69 insulating	491
HYGIENIC T-TYPE / H IP66/IP69	503
HYGIENIC T-TYPE / C IP66/IP69, -50 °C	508
W-TYPE for aggressive environments	523
E-Xtreme® corrosion proof	534 - 535, 544, 554 - 555
EMC	580
Central lever	609 - 611
LS-TYPE	622 - 623
IP68	640 - 643
panel supports:	page:
COB	652 - 653

inserts, crimp connections



16A crimp contacts
standard or for advanced opening
silver and gold plated



description	part No.	part No.
-------------	----------	----------

without contacts (to be ordered separately)
female inserts for female contacts
male inserts for male contacts

CCEF 16
CCEM 16

16A female contacts

0,14-0,37 mm ²	AWG 26-22	one groove
0,5 mm ²	AWG 20	with no grooves
0,75 mm ²	AWG 18	one groove (back side)
1 mm ²	AWG 18	one groove
1,5 mm ²	AWG 16	two grooves
2,5 mm ²	AWG 14	three grooves
3 mm ²	AWG 12	one wide groove
4 mm ²	AWG 12	with no grooves

CCFA 0.3
CCFA 0.5
CCFA 0.7
CCFA 1.0
CCFA 1.5
CCFA 2.5
CCFA 3.0
CCFA 4.0

silver plated

CCFD 0.3
CCFD 0.5
CCFD 0.7
CCFD 1.0
CCFD 1.5
CCFD 2.5
CCFD 3.0
CCFD 4.0

gold plated+

16A male contacts

0,14-0,37 mm ²	AWG 26-22	one groove
0,5 mm ²	AWG 20	with no grooves
0,75 mm ²	AWG 18	one groove (back side)
1 mm ²	AWG 18	one groove
1,5 mm ²	AWG 16	two grooves
2,5 mm ²	AWG 14	three grooves
3 mm ²	AWG 12	one wide groove
4 mm ²	AWG 12	with no grooves

CCMA 0.3
CCMA 0.5
CCMA 0.7
CCMA 1.0
CCMA 1.5
CCMA 2.5
CCMA 3.0
CCMA 4.0

CCMD 0.3
CCMD 0.5
CCMD 0.7
CCMD 1.0
CCMD 1.5
CCMD 2.5
CCMD 3.0
CCMD 4.0

16A male crimp contacts for advanced opening

0,5 mm ²	AWG 20	with no grooves
0,75 mm ²	AWG 18	one groove (back side)
1 mm ²	AWG 18	one groove
1,5 mm ²	AWG 16	two grooves
2,5 mm ²	AWG 14	three grooves

CC 0.5 AN
CC 0.7 AN
CC 1.0 AN
CC 1.5 AN
CC 2.5 AN

* for basic or high thickness gold plating, please refer to page 675

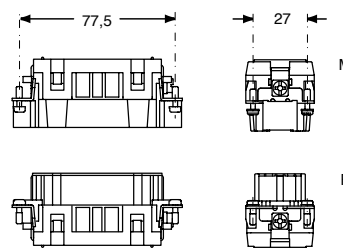
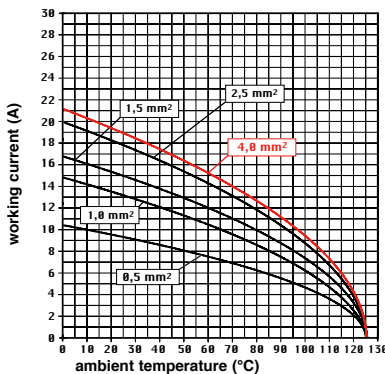
- characteristics according to EN 61984:

16A 500V 6kV 3
16A 400/690V 6kV 2

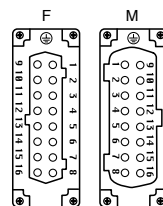
- certified

- rated voltage according to UL/CSA: 600V
- insulation resistance: ≥ 10 GΩ
- ambient temperature limit: -40 °C ... +125 °C
- made of self-extinguishing thermoplastic resin UL 94V-0
- mechanical life: ≥ 500 cycles
- contact resistance: ≤ 1 mΩ
- for max. current load see the connector inserts derating diagram below; for more information see page 28

CCE 16 poles connector inserts
Maximum current load derating diagram

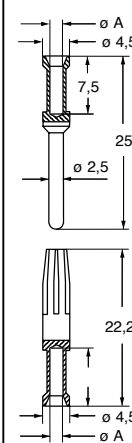


contacts side (front view)

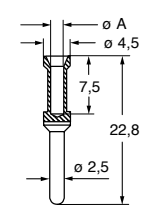


- it is recommended to crimp the contacts with crimping tools homologated by ILME (please see the crimping tool section 16A contacts, CCF, CCM and CC...AN series on pages 708 - 741)

CCF and CCM



CC...AN



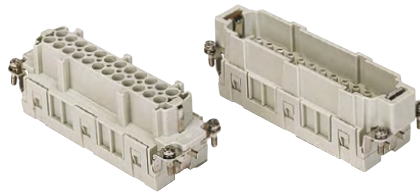
CCF, CCM and CC...AN contacts

conductor section mm ²	conductor slot ø A (mm)	conductors stripping length (mm)
0,14-0,37	0,9	7,5
0,5	1,1	7,5
0,75	1,3	7,5
1,0	1,45	7,5
1,5	1,8	7,5
2,5	2,2	7,5
3	2,55	7,5
4	2,85	7,5

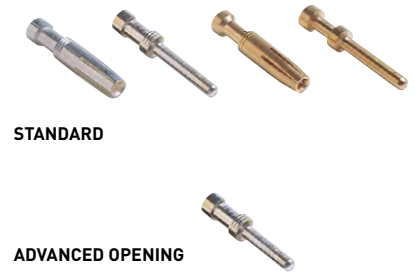
CCE 24 poles + ⊕ 16A - 500V

enclosures: size "104.27"	page:
C-TYPE IP65/IP66	412 - 423
C7 IP67, two levers	441 - 442
V-TYPE IP65/IP66, single lever	459 - 463
BIG hoods	472 - 473
T-TYPE IP65 insulating	486 - 487
T-TYPE / W IP66/IP69 insulating	492
HYGIENIC T-TYPE / H IP66/IP69	504
HYGIENIC T-TYPE / C IP66/IP69, -50 °C	509
W-TYPE for aggressive environments	524
E-Xtreme® corrosion proof	536 - 537, 545, 556 - 557
EMC	581
Central lever	612 - 614
LS-TYPE	624 - 625
IP68	644 - 647
panel supports: COB	page: 652 - 653

inserts, crimp connections



16A crimp contacts
standard or for advanced opening
silver and gold plated



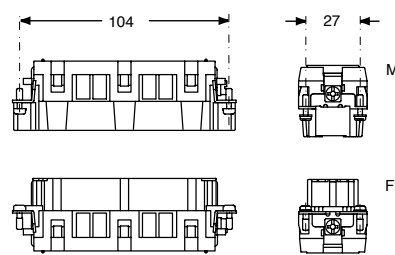
description	part No.	part No.
-------------	----------	----------

without contacts (to be ordered separately)
female inserts for female contacts **CCEF 24**
male inserts for male contacts **CCEM 24**

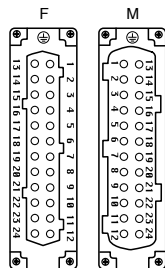
<p>16A female contacts</p> <table border="0"> <tr><td>0,14-0,37 mm²</td><td>AWG 26-22</td><td>one groove</td><td>CCFA 0.3</td><td>CCFD 0.3</td></tr> <tr><td>0,5 mm²</td><td>AWG 20</td><td>with no grooves</td><td>CCFA 0.5</td><td>CCFD 0.5</td></tr> <tr><td>0,75 mm²</td><td>AWG 18</td><td>one groove (back side)</td><td>CCFA 0.7</td><td>CCFD 0.7</td></tr> <tr><td>1 mm²</td><td>AWG 18</td><td>one groove</td><td>CCFA 1.0</td><td>CCFD 1.0</td></tr> <tr><td>1,5 mm²</td><td>AWG 16</td><td>two grooves</td><td>CCFA 1.5</td><td>CCFD 1.5</td></tr> <tr><td>2,5 mm²</td><td>AWG 14</td><td>three grooves</td><td>CCFA 2.5</td><td>CCFD 2.5</td></tr> <tr><td>3 mm²</td><td>AWG 12</td><td>one wide groove</td><td>CCFA 3.0</td><td>CCFD 3.0</td></tr> <tr><td>4 mm²</td><td>AWG 12</td><td>with no grooves</td><td>CCFA 4.0</td><td>CCFD 4.0</td></tr> </table> <p>16A male contacts</p> <table border="0"> <tr><td>0,14-0,37 mm²</td><td>AWG 26-22</td><td>one groove</td><td>CCMA 0.3</td><td>CCMD 0.3</td></tr> <tr><td>0,5 mm²</td><td>AWG 20</td><td>with no grooves</td><td>CCMA 0.5</td><td>CCMD 0.5</td></tr> <tr><td>0,75 mm²</td><td>AWG 18</td><td>one groove (back side)</td><td>CCMA 0.7</td><td>CCMD 0.7</td></tr> <tr><td>1 mm²</td><td>AWG 18</td><td>one groove</td><td>CCMA 1.0</td><td>CCMD 1.0</td></tr> <tr><td>1,5 mm²</td><td>AWG 16</td><td>two grooves</td><td>CCMA 1.5</td><td>CCMD 1.5</td></tr> <tr><td>2,5 mm²</td><td>AWG 14</td><td>three grooves</td><td>CCMA 2.5</td><td>CCMD 2.5</td></tr> <tr><td>3 mm²</td><td>AWG 12</td><td>one wide groove</td><td>CCMA 3.0</td><td>CCMD 3.0</td></tr> <tr><td>4 mm²</td><td>AWG 12</td><td>with no grooves</td><td>CCMA 4.0</td><td>CCMD 4.0</td></tr> </table> <p>16A male crimp contacts for advanced opening</p> <table border="0"> <tr><td>0,5 mm²</td><td>AWG 20</td><td>with no grooves</td><td>CC 0.5 AN</td><td></td></tr> <tr><td>0,75 mm²</td><td>AWG 18</td><td>one groove (back side)</td><td>CC 0.7 AN</td><td></td></tr> <tr><td>1 mm²</td><td>AWG 18</td><td>one groove</td><td>CC 1.0 AN</td><td></td></tr> <tr><td>1,5 mm²</td><td>AWG 16</td><td>two grooves</td><td>CC 1.5 AN</td><td></td></tr> <tr><td>2,5 mm²</td><td>AWG 14</td><td>three grooves</td><td>CC 2.5 AN</td><td></td></tr> </table>	0,14-0,37 mm ²	AWG 26-22	one groove	CCFA 0.3	CCFD 0.3	0,5 mm ²	AWG 20	with no grooves	CCFA 0.5	CCFD 0.5	0,75 mm ²	AWG 18	one groove (back side)	CCFA 0.7	CCFD 0.7	1 mm ²	AWG 18	one groove	CCFA 1.0	CCFD 1.0	1,5 mm ²	AWG 16	two grooves	CCFA 1.5	CCFD 1.5	2,5 mm ²	AWG 14	three grooves	CCFA 2.5	CCFD 2.5	3 mm ²	AWG 12	one wide groove	CCFA 3.0	CCFD 3.0	4 mm ²	AWG 12	with no grooves	CCFA 4.0	CCFD 4.0	0,14-0,37 mm ²	AWG 26-22	one groove	CCMA 0.3	CCMD 0.3	0,5 mm ²	AWG 20	with no grooves	CCMA 0.5	CCMD 0.5	0,75 mm ²	AWG 18	one groove (back side)	CCMA 0.7	CCMD 0.7	1 mm ²	AWG 18	one groove	CCMA 1.0	CCMD 1.0	1,5 mm ²	AWG 16	two grooves	CCMA 1.5	CCMD 1.5	2,5 mm ²	AWG 14	three grooves	CCMA 2.5	CCMD 2.5	3 mm ²	AWG 12	one wide groove	CCMA 3.0	CCMD 3.0	4 mm ²	AWG 12	with no grooves	CCMA 4.0	CCMD 4.0	0,5 mm ²	AWG 20	with no grooves	CC 0.5 AN		0,75 mm ²	AWG 18	one groove (back side)	CC 0.7 AN		1 mm ²	AWG 18	one groove	CC 1.0 AN		1,5 mm ²	AWG 16	two grooves	CC 1.5 AN		2,5 mm ²	AWG 14	three grooves	CC 2.5 AN		<p>silver plated</p>	<p>gold plated+</p>
0,14-0,37 mm ²	AWG 26-22	one groove	CCFA 0.3	CCFD 0.3																																																																																																							
0,5 mm ²	AWG 20	with no grooves	CCFA 0.5	CCFD 0.5																																																																																																							
0,75 mm ²	AWG 18	one groove (back side)	CCFA 0.7	CCFD 0.7																																																																																																							
1 mm ²	AWG 18	one groove	CCFA 1.0	CCFD 1.0																																																																																																							
1,5 mm ²	AWG 16	two grooves	CCFA 1.5	CCFD 1.5																																																																																																							
2,5 mm ²	AWG 14	three grooves	CCFA 2.5	CCFD 2.5																																																																																																							
3 mm ²	AWG 12	one wide groove	CCFA 3.0	CCFD 3.0																																																																																																							
4 mm ²	AWG 12	with no grooves	CCFA 4.0	CCFD 4.0																																																																																																							
0,14-0,37 mm ²	AWG 26-22	one groove	CCMA 0.3	CCMD 0.3																																																																																																							
0,5 mm ²	AWG 20	with no grooves	CCMA 0.5	CCMD 0.5																																																																																																							
0,75 mm ²	AWG 18	one groove (back side)	CCMA 0.7	CCMD 0.7																																																																																																							
1 mm ²	AWG 18	one groove	CCMA 1.0	CCMD 1.0																																																																																																							
1,5 mm ²	AWG 16	two grooves	CCMA 1.5	CCMD 1.5																																																																																																							
2,5 mm ²	AWG 14	three grooves	CCMA 2.5	CCMD 2.5																																																																																																							
3 mm ²	AWG 12	one wide groove	CCMA 3.0	CCMD 3.0																																																																																																							
4 mm ²	AWG 12	with no grooves	CCMA 4.0	CCMD 4.0																																																																																																							
0,5 mm ²	AWG 20	with no grooves	CC 0.5 AN																																																																																																								
0,75 mm ²	AWG 18	one groove (back side)	CC 0.7 AN																																																																																																								
1 mm ²	AWG 18	one groove	CC 1.0 AN																																																																																																								
1,5 mm ²	AWG 16	two grooves	CC 1.5 AN																																																																																																								
2,5 mm ²	AWG 14	three grooves	CC 2.5 AN																																																																																																								

* for basic or high thickness gold plating, please refer to page 675

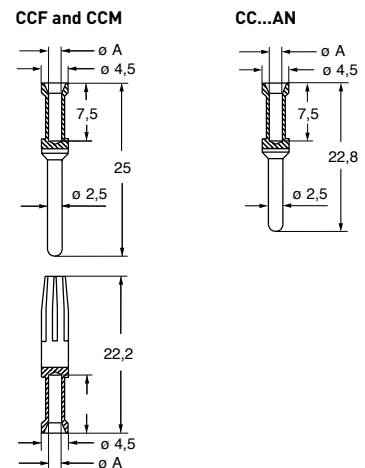
- characteristics according to EN 61984:
16A 500V 6kV 3
16A 400/690V 6kV 2
- certified
- rated voltage according to UL/CSA: 600V
- insulation resistance: ≥ 10 GΩ
- ambient temperature limit: -40 °C ... +125 °C
- made of self-extinguishing thermoplastic resin UL 94V-0
- mechanical life: ≥ 500 cycles
- contact resistance: ≤ 1 mΩ
- for max. current load see the connector inserts derating diagram below; for more information see page 28



contacts side (front view)

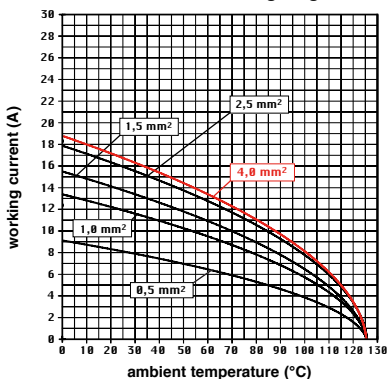


- it is recommended to crimp the contacts with crimping tools homologated by ILME (please see the crimping tool section 16A contacts, CCF, CCM and CC...AN series on pages 708 - 741)



CCF, CCM and CC...AN contacts		
conductor section mm ²	conductor slot ϕA (mm)	conductors stripping length (mm)
0,14-0,37	0,9	7,5
0,5	1,1	7,5
0,75	1,3	7,5
1,0	1,45	7,5
1,5	1,8	7,5
2,5	2,2	7,5
3	2,55	7,5
4	2,85	7,5

CCE 24 poles connector inserts
Maximum current load derating diagram



CCE 32 poles + ⊕ 16A - 500V

enclosures:
size "77.62"

page:

C-TYPE IP65/IP66

424 - 429

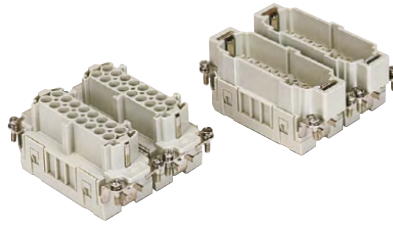
W-TYPE for aggressive environments

525

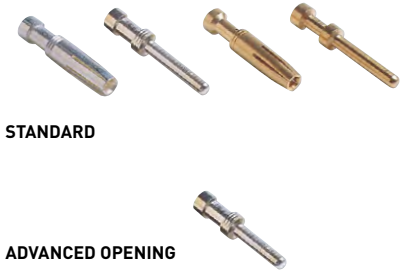
E-Xtreme® corrosion proof

546

inserts, crimp connections



16A crimp contacts
standard or for advanced opening
silver and gold plated



STANDARD

ADVANCED OPENING

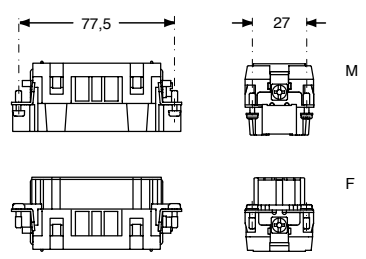
description	part No.	part No.	part No.
without contacts (to be ordered separately)			
female inserts for female contacts, No. (1-16) and (17-32)	CCEF 16	CCEM 16	CCE 16 N
male inserts for male contacts, No. (1-16) and (17-32)			CCEM 16 N
16A female contacts			
0,14-0,37 mm ² AWG 26-22 one groove			CCFA 0.3
0,5 mm ² AWG 20 with no grooves			CCFA 0.5
0,75 mm ² AWG 18 one groove (back side)			CCFA 0.7
1 mm ² AWG 18 one groove			CCFA 1.0
1,5 mm ² AWG 16 two grooves			CCFA 1.5
2,5 mm ² AWG 14 three grooves			CCFA 2.5
3 mm ² AWG 12 one wide groove			CCFA 3.0
4 mm ² AWG 12 with no grooves			CCFA 4.0
16A male contacts			
0,14-0,37 mm ² AWG 26-22 one groove			CCMA 0.3
0,5 mm ² AWG 20 with no grooves			CCMA 0.5
0,75 mm ² AWG 18 one groove (back side)			CCMA 0.7
1 mm ² AWG 18 one groove			CCMA 1.0
1,5 mm ² AWG 16 two grooves			CCMA 1.5
2,5 mm ² AWG 14 three grooves			CCMA 2.5
3 mm ² AWG 12 one wide groove			CCMA 3.0
4 mm ² AWG 12 with no grooves			CCMA 4.0
16A male crimp contacts for advanced opening			
0,5 mm ² AWG 20 with no grooves			CC 0.5 AN
0,75 mm ² AWG 18 one groove (back side)			CC 0.7 AN
1 mm ² AWG 18 one groove			CC 1.0 AN
1,5 mm ² AWG 16 two grooves			CC 1.5 AN
2,5 mm ² AWG 14 three grooves			CC 2.5 AN

silver plated

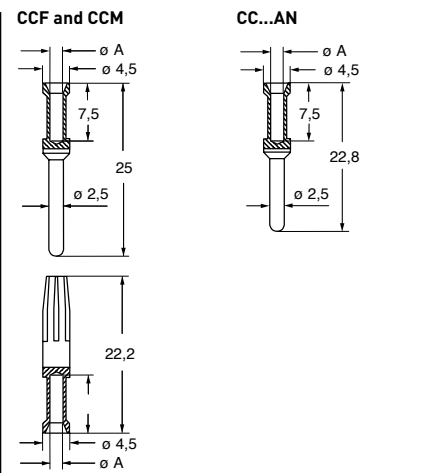
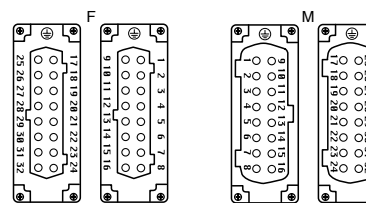
gold plated+

* for basic or high thickness gold plating, please refer to page 675

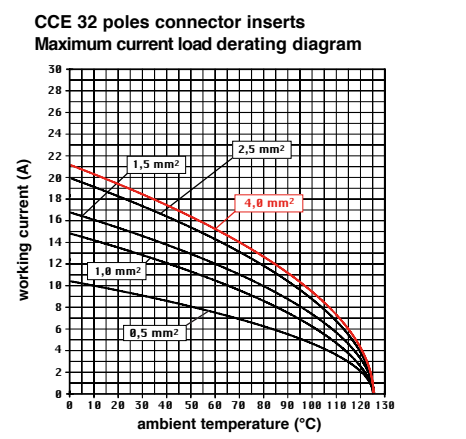
- characteristics according to EN 61984:
- 16A 500V 6kV 3**
- 16A 400/690V 6kV 2**
- certified
- rated voltage according to UL/CSA: 600V
- insulation resistance: ≥ 10 GΩ
- ambient temperature limit: -40 °C ... +125 °C
- made of self-extinguishing thermoplastic resin UL 94V-0
- mechanical life: ≥ 500 cycles
- contact resistance: ≤ 1 mΩ
- for max. current load see the connector inserts derating diagram below; for more information see page 28



contacts side (front view)



CCF, CCM and CC...AN contacts		
conductor section mm ²	conductor slot ø A (mm)	conductors stripping length (mm)
0,14-0,37	0,9	7,5
0,5	1,1	7,5
0,75	1,3	7,5
1,0	1,45	7,5
1,5	1,8	7,5
2,5	2,2	7,5
3	2,55	7,5
4	2,85	7,5



- it is recommended to crimp the contacts with crimping tools homologated by ILME (please see the crimping tool section 16A contacts, CCF, CCM and CC...AN series on pages 708 - 741)

CCE

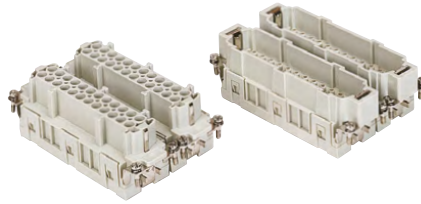
CCE 48 poles + ⊕ 16A - 500V

enclosures:
size "104.62"

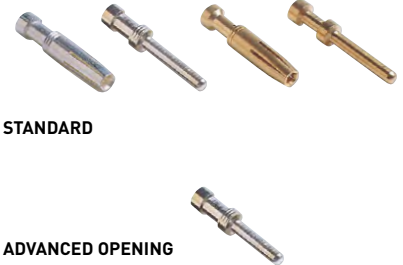
page:

C-TYPE IP65/IP66	430
W-TYPE for aggressive environments	526
E-Xtreme® corrosion proof	547

inserts, crimp connections



16A crimp contacts standard or for advanced opening silver and gold plated



STANDARD

ADVANCED OPENING

description	part No.	part No.	part No.
-------------	----------	----------	----------

without contacts (to be ordered separately)
female inserts for female contacts, No. (1-24) and (25-48)
male inserts for male contacts, No. (1-24) and (25-48)

CCEF 24	CCEM 24	CCEF 24 N	CCEM 24 N
----------------	----------------	------------------	------------------

16A female contacts

0,14-0,37 mm ²	AWG 26-22	one groove
0,5 mm ²	AWG 20	with no grooves
0,75 mm ²	AWG 18	one groove (back side)
1 mm ²	AWG 18	one groove
1,5 mm ²	AWG 16	two grooves
2,5 mm ²	AWG 14	three grooves
3 mm ²	AWG 12	one wide groove
4 mm ²	AWG 12	with no grooves

CCFA 0.3
CCFA 0.5
CCFA 0.7
CCFA 1.0
CCFA 1.5
CCFA 2.5
CCFA 3.0
CCFA 4.0

silver plated

CCFD 0.3
CCFD 0.5
CCFD 0.7
CCFD 1.0
CCFD 1.5
CCFD 2.5
CCFD 3.0
CCFD 4.0

gold plated

16A male contacts

0,14-0,37 mm ²	AWG 26-22	one groove
0,5 mm ²	AWG 20	with no grooves
0,75 mm ²	AWG 18	one groove (back side)
1 mm ²	AWG 18	one groove
1,5 mm ²	AWG 16	two grooves
2,5 mm ²	AWG 14	three grooves
3 mm ²	AWG 12	one wide groove
4 mm ²	AWG 12	with no grooves

CCMA 0.3
CCMA 0.5
CCMA 0.7
CCMA 1.0
CCMA 1.5
CCMA 2.5
CCMA 3.0
CCMA 4.0

CCMD 0.3
CCMD 0.5
CCMD 0.7
CCMD 1.0
CCMD 1.5
CCMD 2.5
CCMD 3.0
CCMD 4.0

16A male crimp contacts for advanced opening

0,5 mm ²	AWG 20	with no grooves
0,75 mm ²	AWG 18	one groove (back side)
1 mm ²	AWG 18	one groove
1,5 mm ²	AWG 16	two grooves
2,5 mm ²	AWG 14	three grooves

CC 0.5 AN
CC 0.7 AN
CC 1.0 AN
CC 1.5 AN
CC 2.5 AN

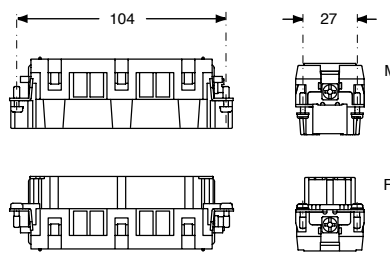
* for basic or high thickness gold plating, please refer to page 675

- characteristics according to EN 61984:

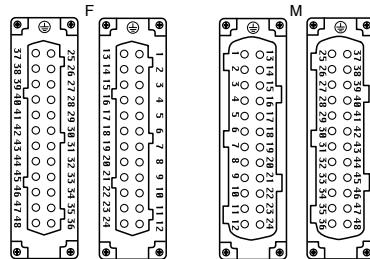
16A 500V 6kV 3
16A 400/690V 6kV 2

- certified

- rated voltage according to UL/CSA: 600V
- insulation resistance: ≥ 10 GΩ
- ambient temperature limit: -40 °C ... +125 °C
- made of self-extinguishing thermoplastic resin UL 94V-0
- mechanical life: ≥ 500 cycles
- contact resistance: ≤ 1 mΩ
- for max. current load see the connector inserts derating diagram below; for more information see page 28

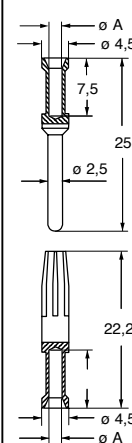


contacts side (front view)

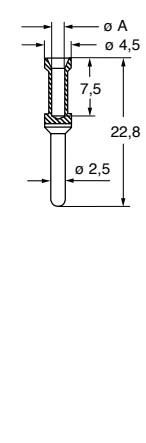


- it is recommended to crimp the contacts with crimping tools homologated by ILME (please see the crimping tool section 16A contacts, CCF, CCM and CC...AN series on pages 708 - 741)

CCF and CCM



CC...AN



CCF, CCM and CC...AN contacts

conductor section mm ²	conductor slot ø A (mm)	conductors stripping length (mm)
0,14-0,37	0,9	7,5
0,5	1,1	7,5
0,75	1,3	7,5
1,0	1,45	7,5
1,5	1,8	7,5
2,5	2,2	7,5
3	2,55	7,5
4	2,85	7,5

CCE 48 poles connector inserts
Maximum current load derating diagram

