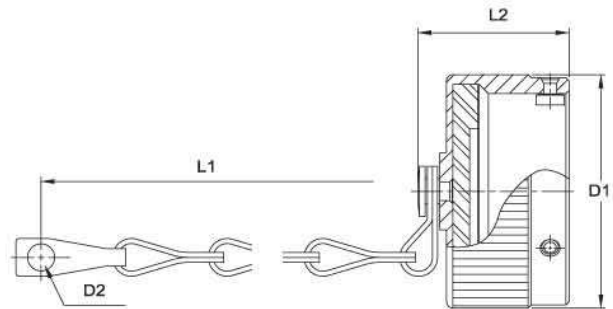
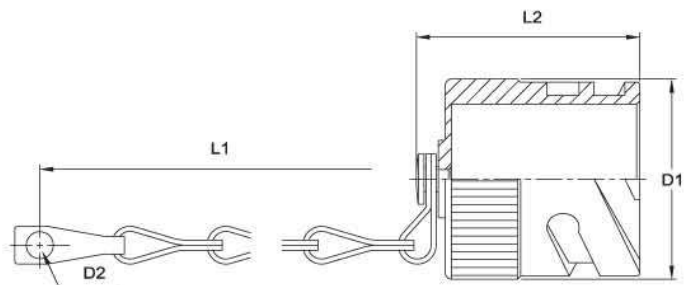


VG 25043 Protective Cover for Receptacles



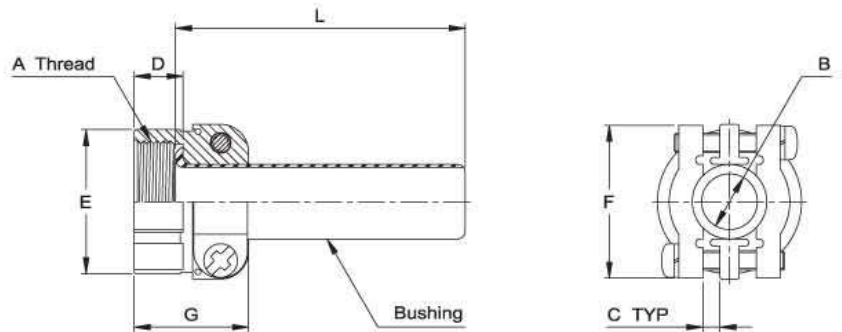
INC Part No.	VG95234 Part No.	Shell Size Connector	D1 dia. max.	D2 dia. +0.6 -0.0	L1 min.	L2 max.
INB25043 - 10SL	VG95234KR10SL	10SL	23.5	4.3	90.0	30.3
INB25043 - 14S	VG95234KR14S	14S	30.5	4.3	90.0	30.0
INB25043 - 16S	VG95234KR16S	16S	33.0	4.3	90.0	30.3
INB25043 - 16	VG95234KR16	16	33.0	4.3	100.0	35.0
INB25043 - 18	VG95234KR18	18	37.5	4.3	100.0	35.0
INB25043 - 20	VG95234KR20	20	41.0	4.3	115.0	35.0
INB25043 - 22	VG95234KR22	22	44.0	4.3	115.0	35.0
INB25043 - 24	VG95234KR24	24	47.5	4.3	115.0	35.0
INB25043 - 28	VG95234KR28	28	54.5	4.3	160.0	35.0
INB25043 - 32	VG95234KR32	32	61.0	4.3	160.0	35.0
INB25043 - 36	VG95234KR36	36	67.5	4.3	160.0	35.0

VG 25042 Protective Cover for Plugs



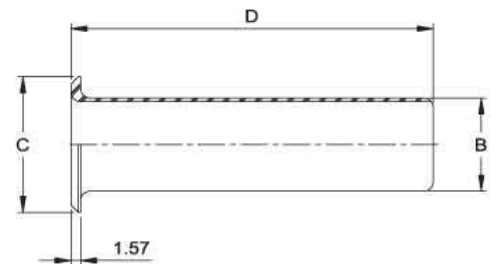
INC Part No.	VG95234 Part No.	Shell Size Connector	D1 dia. max.	D2 dia. +0.6 -0.0	L1 min.	L2 max.
INB25042 - 10SL	VG95234KB10SL	10SL	21.0	4.3	90.0	34.0
INB25042 - 14S	VG95234KB14S	14S	27.5	4.3	100.0	34.0
INB25042 - 16S	VG95234KB16S	16S	30.0	4.3	100.0	34.0
INB25042 - 16	VG95234KB16	16	30.0	4.3	115.0	42.0
INB25042 - 18	VG95234KB18	18	33.5	4.3	115.0	42.0
INB25042 - 20	VG95234KB20	20	37.0	4.7	130.0	42.0
INB25042 - 22	VG95234KB22	22	40.0	4.7	130.0	42.0
INB25042 - 24	VG95234KB24	24	43.5	4.7	130.0	42.0
INB25042 - 28	VG95234KB28	28	49.5	4.7	190.0	42.0
INB25042 - 32	VG95234KB32	32	56.0	4.7	190.0	42.0
INB25042 - 36	VG95234KB36	36	62.5	4.7	190.0	42.0

MS3057-■ ■ A Cable Clamp



Part No.	Connector Shell Size	A Thread Class 2B	B dia. ± 0.41	C TYP	D	E dia. ± 0.79	F ± 0.79	G ± 0.79	L Ref.	Bushing Ref.
I/MS3057 - 4A	10SL, 12S & 12	5/8-24 UNEF	5.59	1.57	10.31	20.62	22.23	20.62	69.9	MS3420 - 4
I/MS3057 - 6A	14S & 14	3/4-20 UNEF	7.92	1.98	10.31	24.61	26.97	22.22	66.7	MS3420 - 6
I/MS3057 - 8A	16S & 16	7/8-20 UNEF	11.10	2.77	10.31	27.79	29.36	23.82	63.5	MS3420 - 8
I/MS3057 - 10A	18	1-20 UNEF	14.27	3.18	10.31	30.18	31.75	23.82	60.3	MS3420 - 10
I/MS3057 - 12A	20, 22	1 3/16-18 UNEF	15.88	3.96	10.31	34.93	37.31	23.82	57.2	MS3420 - 12
I/MS3057 - 16A	24, 28	1 7/16-18 UNEF	19.05	4.78	10.31	42.06	42.88	26.18	54.0	MS3420 - 16
I/MS3057 - 20A	32	1 3/4-18 UNS	23.80	6.35	11.91	51.59	51.59	27.78	50.8	MS3420 - 20
I/MS3057 - 24A	36	2-18 UNS	31.75	7.54	13.49	56.36	57.94	29.36	47.6	MS3420 - 24

MS3420 Telescoping Bushing



Part No.	Connector Shell Size	A dia. ± 0.41	B dia. ± 0.41	C dia. ± 0.41	D ± 0.41	Cable Clamp Ref.
I/MS3420 - 4	10SL, 12S & 12	5.59	7.67	12.83	69.85	MS3057 - 4A
I/MS3420 - 6	14S & 14	7.92	10.85	15.72	66.68	MS3057 - 6A
I/MS3420 - 8	16S & 16	11.10	14.02	18.90	63.50	MS3057 - 8A
I/MS3420 - 10	18	14.27	15.62	22.58	60.33	MS3057 - 10A
I/MS3420 - 12	20, 22	15.88	18.80	27.53	57.15	MS3057 - 12A
I/MS3420 - 16	24, 28	19.05	23.55	33.38	53.98	MS3057 - 16A
I/MS3420 - 20	32	23.80	31.50	40.59	50.80	MS3057 - 20A
I/MS3420 - 24	36	31.75	34.67	46.91	47.63	MS3057 - 24A