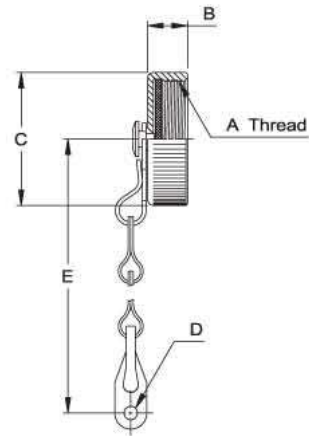
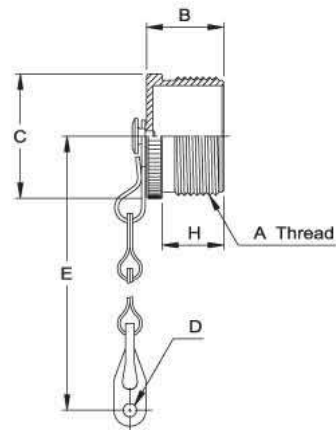


## MS25043 Protective Cover for Receptacle



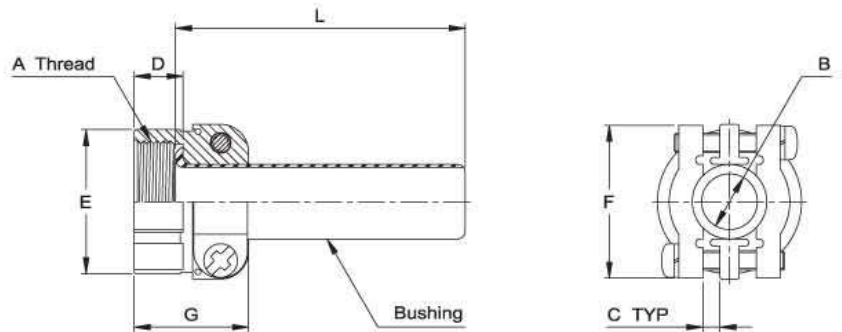
Part No.	Connector Shell Size	A Thread Class 2B	B max.	C dia. max.	D dia. +0.25 -0.13	E ±21.0
I/MS25043 - 10D	10S, 10SL	5/8-24 UNEF	11.91	20.70	3.56	101.6
I/MS25043 - 12D	12S, 12	3/4-20 UNEF	11.91	25.40	3.56	114.3
I/MS25043 - 14D	14S, 14	7/8-20 UNEF	11.91	28.58	3.56	114.3
I/MS25043 - 16D	16S, 16	1-20 UNEF	11.91	30.18	3.56	114.3
I/MS25043 - 18D	18	1 1/8-18 UNEF	11.91	34.14	3.56	114.3
I/MS25043 - 20D	20	1 1/4-18 UNEF	11.91	37.31	3.56	127.0
I/MS25043 - 22D	22	1 3/8-18 UNEF	11.91	40.49	3.56	127.0
I/MS25043 - 24D	24	1 1/2-18 UNEF	11.91	43.66	4.34	139.7
I/MS25043 - 28D	28	1 3/4-18 UNS	13.49	50.01	4.34	196.8
I/MS25043 - 32D	32	2-18 UNS	13.49	56.36	4.75	196.8
I/MS25043 - 36D	36	2 1/4-16 UN	13.49	62.71	4.75	196.8

## MS25042 Protective Cover for Plug



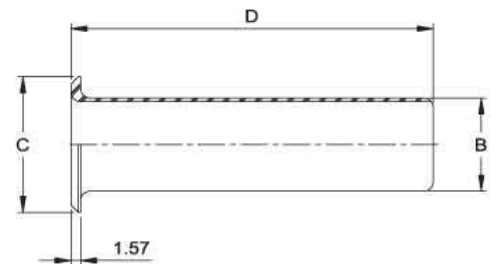
Part No.	Connector Shell Size	A Thread Class 2A	B max.	C dia. max.	D dia. +0.25 -0.13	E ±21.0	H min.
I/MS25042 - 10D	10S, 10SL	5/8-24 UNEF	16.66	17.45	3.96	101.6	9.65
I/MS25042 - 12D	12S, 12	3/4-20 UNEF	21.44	20.62	3.96	114.3	16.00
I/MS25042 - 14D	14S, 14	7/8-20 UNEF	21.44	23.80	3.96	114.3	16.00
I/MS25042 - 16D	16S, 16	1-20 UNEF	21.44	26.97	3.96	114.3	16.00
I/MS25042 - 18D	18	1 1/8-18 UNEF	21.44	30.15	3.96	114.3	16.00
I/MS25042 - 20D	20	1 1/4-18 UNEF	21.44	33.32	4.75	127.0	16.00
I/MS25042 - 22D	22	1 3/8-18 UNEF	21.44	36.50	4.75	127.0	16.00
I/MS25042 - 24D	24	1 1/2-18 UNEF	21.44	39.67	4.75	139.7	16.00
I/MS25042 - 28D	28	1 3/4-18 UNS	21.44	46.02	4.75	196.8	16.00
I/MS25042 - 32D	32	2-18 UNS	21.44	52.37	5.54	196.8	16.00
I/MS25042 - 36D	36	2 1/4-16 UN	21.44	58.72	5.54	196.8	16.00

## MS3057-■ ■ A Cable Clamp



Part No.	Connector Shell Size	A Thread Class 2B	B dia. $\pm 0.41$	C TYP	D	E dia. $\pm 0.79$	F $\pm 0.79$	G $\pm 0.79$	L Ref.	Bushing Ref.
I/MS3057 - 4A	10SL, 12S & 12	5/8-24 UNEF	5.59	1.57	10.31	20.62	22.23	20.62	69.9	MS3420 - 4
I/MS3057 - 6A	14S & 14	3/4-20 UNEF	7.92	1.98	10.31	24.61	26.97	22.22	66.7	MS3420 - 6
I/MS3057 - 8A	16S & 16	7/8-20 UNEF	11.10	2.77	10.31	27.79	29.36	23.82	63.5	MS3420 - 8
I/MS3057 - 10A	18	1-20 UNEF	14.27	3.18	10.31	30.18	31.75	23.82	60.3	MS3420 - 10
I/MS3057 - 12A	20, 22	1 3/16-18 UNEF	15.88	3.96	10.31	34.93	37.31	23.82	57.2	MS3420 - 12
I/MS3057 - 16A	24, 28	1 7/16-18 UNEF	19.05	4.78	10.31	42.06	42.88	26.18	54.0	MS3420 - 16
I/MS3057 - 20A	32	1 3/4-18 UNS	23.80	6.35	11.91	51.59	51.59	27.78	50.8	MS3420 - 20
I/MS3057 - 24A	36	2-18 UNS	31.75	7.54	13.49	56.36	57.94	29.36	47.6	MS3420 - 24

## MS3420 Telescoping Bushing



Part No.	Connector Shell Size	A dia. $\pm 0.41$	B dia. $\pm 0.41$	C dia. $\pm 0.41$	D $\pm 0.41$	Cable Clamp Ref.
I/MS3420 - 4	10SL, 12S & 12	5.59	7.67	12.83	69.85	MS3057 - 4A
I/MS3420 - 6	14S & 14	7.92	10.85	15.72	66.68	MS3057 - 6A
I/MS3420 - 8	16S & 16	11.10	14.02	18.90	63.50	MS3057 - 8A
I/MS3420 - 10	18	14.27	15.62	22.58	60.33	MS3057 - 10A
I/MS3420 - 12	20, 22	15.88	18.80	27.53	57.15	MS3057 - 12A
I/MS3420 - 16	24, 28	19.05	23.55	33.38	53.98	MS3057 - 16A
I/MS3420 - 20	32	23.80	31.50	40.59	50.80	MS3057 - 20A
I/MS3420 - 24	36	31.75	34.67	46.91	47.63	MS3057 - 24A