

SR IP67 Series

Part Numbering / Specifications



Features

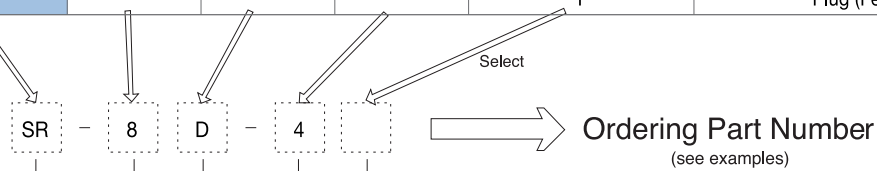
- Protection rating of IP67 with over molding
- M12 threaded locking

Applications

- Factory Automation and Sensors
- Process control
- Industrial instrumentation
- Commercial electronics

■ Part Numbering

Series	Size	Mating Part Type	No. of Contacts	Suffix (Contact Type)	Notes
SR	8	D	4	J	Jack (Male contact)
				P	Plug (Female contact)



Connector Series

SR Series

Size

8

Mating Part Type

D : DC Type

No. of Contacts

4

Body Type

J : Jack

P : Plug

Examples


SR - 8D - 4J
SR series - Size 8 Jack - 4 Male Contact

SR - 8D - 4P
SR series - Size 8 Plug - 4 Female Contact

■ Material Used / Finish

	Material	Finish
Cap	Brass	Ni Plating
Insulator	PBT	Black
Outer sheath	PVC	—
Contacts	Male	Brass Gold or Silver Plating
	Female	Phosphor bronze Gold or Silver Plating

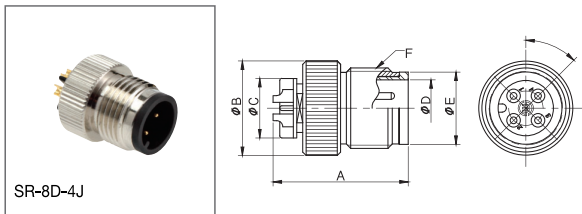
Major Performances / Contact Arrangements

Size/No of Contacts	Size 8	
Performance	4	
Withstanding Voltage (per min)	AC 1500V	
Rated Current	3A	
Rated Voltage	DC 125V	
Insulation Resistance (Minimum)	100M Ω or more at DC500V	
Contact Resistance (Maximum)	$\leq 10m \Omega$	
IP Protection Rating	IP 67	
Contact Arrangement	Male	Female
	DC type	

Note : Figure Male No.

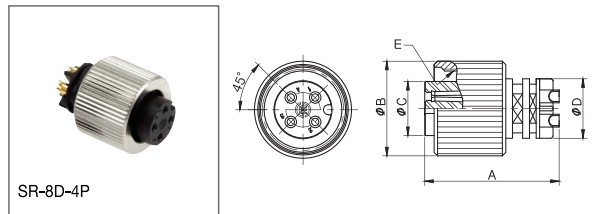
- ¹ Withstanding voltage is the tested voltage value in this table.
- ² Insulation resistance is measured at DC 100V.
- ³ Contact resistance is measured at DC 1A.
- Values are from tested items and may not apply to all connectors.
- Specifications subject to change without notice.
- Consult Sam Woo Electronics for the latest specifications.
- ⁴ Connector contact arrangement is from mating surface.

SR-8D-4J



Product Number	A	ϕB	ϕC	ϕD	ϕE	F
SR-8D-4J	20,1	14	8,9	8,3	10,7	M12 \times 1,0P

SR-8D-4P



Product Number	A	ϕB	ϕC	ϕD	E
SR-8D-4P	20,2	14	8	9	M12 \times 1,0P

SR Series Mini-map

