

# LP-24-HDMI Series



## Product parameter

Part NO.	LP-24-C/HDMI2/115/PE-41-001 LP-24-J/HDMI2/213/SX-43-401
Wire specification	0.15Mm <sup>2</sup> ~ 0.2Mm <sup>2</sup> /26-24AWG
Line diameter range	Φ5.0mm~Φ6.5mm
Diameter×number	10
Rated current(A)	0.5A
Operation voltage(AC.V.RMS)	/
Contact resistance	<30mΩ
Temperature rise	/
Withstand voltage (AC.V)1minute	30V
Insulation resistance	/
Protection level	IP67
Mating cycle	≥500times
Working temperature	-40℃ ~ 80℃
Connection mode	Quick bayonet connection
Wiring mode	Welding / Crimping

## Material

Insulation components	High-performance engineering plastics
Hardware	Zinc alloy ( Nickel Plating )
HDMI inner core	Copper alloy   gold plating
Waterproof circle	Silica gel
Flame retardant grade	UL94-V0

## Core tables

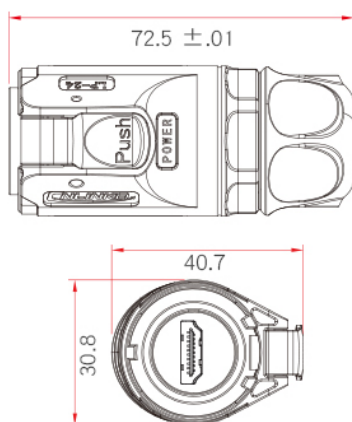
the number of pins	LP-HDMI
The PIN map	
Rated current	0.5A
Operating voltage	30V
Withstanding Voltage	500V
Contact resistance	< 30mΩ
Temperature rise	/
Contact diameter x number	/
Insertion force	4.5N Max.
Durability	500times
Screw torque	/
Working temperature	-40℃ ~ +80℃
Vibration	Frequency: 5~200Hz, amplitude: 5mm, speed: 10m/s,0.10us without instantaneous break
Impact resistance	294m/s <sup>2</sup>
Salt fog	PH6.5-7.2,NaCl,5% 48H
Cable specification	/
Diameter range	Applicable scope of OD(5.0Φ-6.5Φ) mm
Protection level	IP67
Certification standards	Comply with the TUV and UL certification standards

## Connection graph

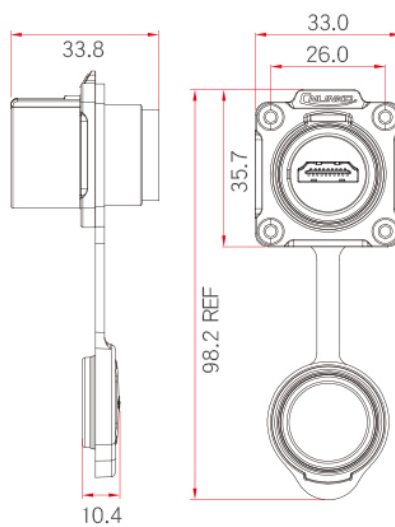


## Appearance dimension

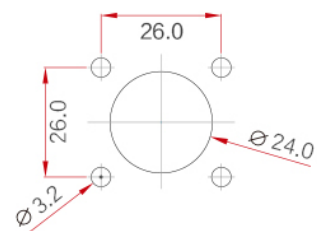
Dimensions figure



socket ( dimensions figure )



Installation hole figure



# DH-24-HDMI Series



## Product parameter

Part NO.	DH-24-C/HDMI2/016/PE-43-001 DH-24-J/HDMI2/213/SX-43-402
Wire specification	0.15Mm <sup>2</sup> ~0.2Mm <sup>2</sup> /26-24AWG
Line diameter range	Φ5.0mm~Φ6.5mm
Diameter×number	10
Rated current(A)	0.5A
Operation voltage(AC.V.RMS)	/
Contact resistance	<30mΩ
Temperature rise	/
Withstand voltage (AC.V)1minute	30V
Insulation resistance	/
Protection level	IP67
Mating cycle	≥500times
Working temperature	-40℃~80℃
Connection mode	Quick bayonet connection
Wiring mode	Welding / Crimping

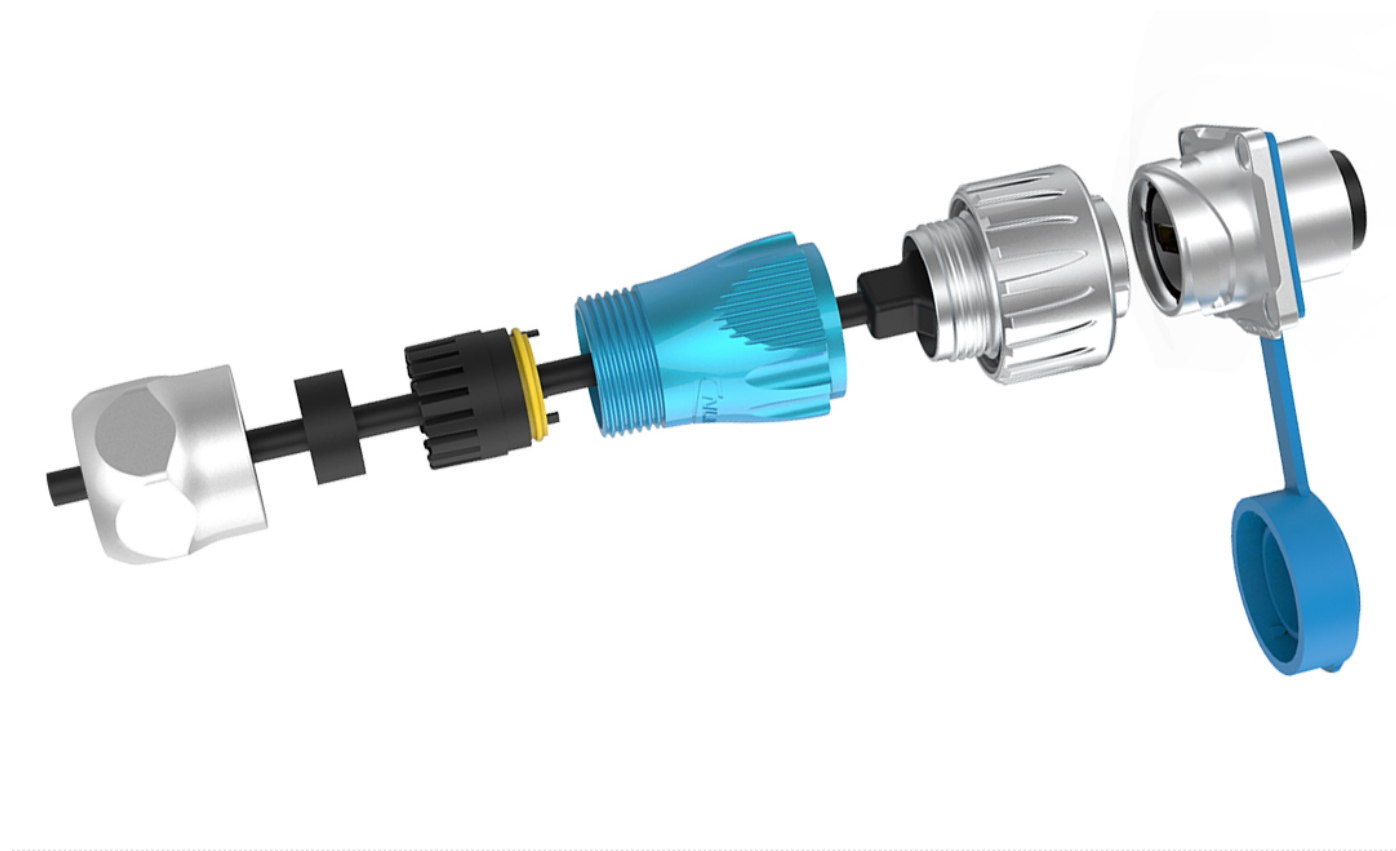
## Material

Insulation components	High-performance engineering plastics
Hardware	Zinc alloy ( Nickel Plating )
HDMI inner core	Copper alloy   gold plating
Waterproof circle	Silica gel
Flame retardant grade	UL94-V0

## Core tables

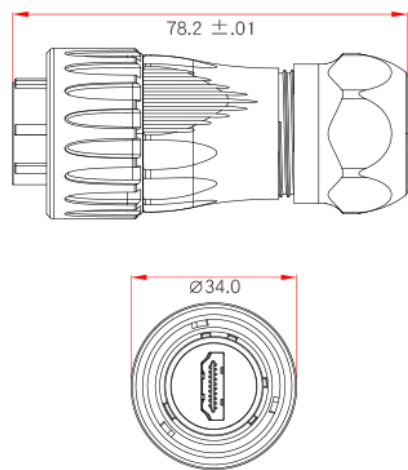
the number of pins	DH-HDMI
The PIN map	
Rated current	0.5A
Operating voltage	30V
Withstanding Voltage	500V
Contact resistance	<30mΩ
Temperature rise	/
Contact diameter x number	/
Insertion force	4.5N Max.
Durability	500times
Screw torque	/
Working temperature	-40℃ ~ +80℃
Vibration	Frequency: 5~200Hz, amplitude: 5mm, speed: 10m/s,0.10us without instantaneous break
Impact resistance	294m/s <sup>2</sup>
Salt fog	PH6.5-7.2,NaCl,5% 48H
Cable specification	/
Diameter range	Applicable scope of OD(5.0Φ-6.5Φ) mm
Protection level	IP67
Certification standards	Comply with the TUV and UL certification standards

Connection graph

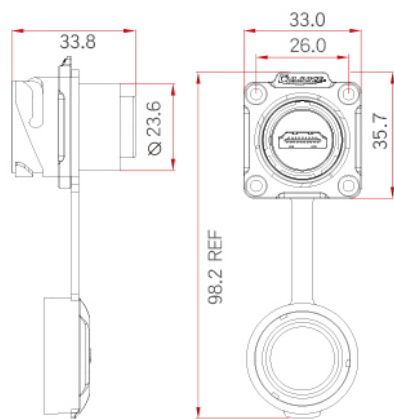


Appearance dimension

Dimensions figure



socket ( dimensions figure )



Installation hole figure

