

# PE...SM wall-mounting plugs, low voltage from over 50V up to 690V



- Compliant with EN 60309-1 and -2
- Enclosure, insert and locking ring in insulating, thermoplastic, self-extinguishing material
- PE...SM types (IP44), enclosure colour coded according to the operating voltage, top entry with threaded grommet (replaceable with cable gland)
- PEW...SM types (IP67), RAL 7035 grey enclosure, locking ring with gasket colour coded according to the operating voltage, top entry with cable gland
- Terminals with retained screws
- 63A, 125A: with pilot contact
- Nickel-plated contacts, available on request for 16A and 32A (standard on 63A and 125A). For the code of products with nickel-plated contacts (socket holes, plug pins), add "N" to the pre-code of the corresponding standard product code; for example: PE becomes PEN and PEW becomes PEWN.
- 125A: with terminal block for the anchoring of incoming cables, already connected to socket
- IP44 and IP67 degrees of protection (EN 60529)
- with Italian Quality Mark

## 16A IP44 degree of protection



## 32A IP44 degree of protection



Number of poles	Frequency Hz	Voltage V	Earthing contact position h	Part No.	Colour	Part No.	Colour
2P+⊕	50 and 60	100 - 130	4	PE 1643 SM		PE 3243 SM	
	50 and 60	200 - 250	6	PE 1663 SM		PE 3263 SM	
	50 and 60	380 - 415	9	PE 1693 SM		PE 3293 SM	
	50 and 60	480 - 500	7	PE 1673 SM		PE 3273 SM	
	50 and 60	ins. transformer	12	PE 16123 SM		PE 32123 SM	
	> 300 - 500	> 50	2	PE 1623 SM		PE 3223 SM	
	d.c.	> 50 - 250	3	PE 1633 SM		PE 3233 SM	
	d.c.	> 250	8	PE 1683 SM		PE 3283 SM	
	3P+⊕	50 and 60	100 - 130	4	PE 1644 SM		PE 3244 SM
50 and 60		200 - 250	9	PE 1694 SM		PE 3294 SM	
50 and 60		380 - 415	6	PE 1664 SM		PE 3264 SM	
60		440 - 460	11	PE 16114 SM		PE 32114 SM	
50 and 60		480 - 500	7	PE 1674 SM		PE 3274 SM	
50 and 60		600 - 690	5	PE 1654 SM		PE 3254 SM	
50		380	3	PE 1634 SM		PE 3234 SM	
60		440	3	PE 1634 SM		PE 3234 SM	
100 - 300		> 50	10	PE 16104 SM		PE 32104 SM	
> 300 - 500		> 50	2	PE 1624 SM		PE 3224 SM	
3P+N+⊕		50 and 60	57/100 - 75/130	4	PE 1645 SM		PE 3245 SM
	50 and 60	120/208 - 144/250	9	PE 1695 SM		PE 3295 SM	
	50 and 60	200/346 - 240/415	6	PE 1665 SM		PE 3265 SM	
	50 and 60	277/480 - 288/500	7	PE 1675 SM		PE 3275 SM	
	50 and 60	347/600 - 400/690	5	PE 1655 SM		PE 3255 SM	
	60	250/440 - 265/460	11	PE 16115 SM		PE 32115 SM	
	50	220/380	3	PE 1635 SM		PE 3235 SM	
	60	250/440	3	PE 1635 SM		PE 3235 SM	
	> 300 - 500	> 50	2	PE 1625 SM		PE 3225 SM	

### Legend

A.V. = Colour according to voltage  
 (\*) Green may be used together with the colour of the operating range for frequencies above 60 Hz and up to a maximum of 500 Hz.

### Accessories for IP67 plugs (optional)



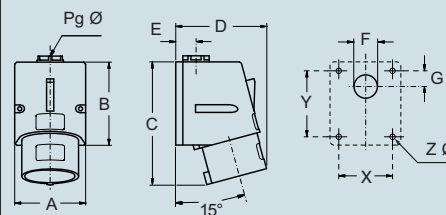
### Loose protective cover

Size	Polarity	Part No.
16A	2P+⊕	PEW 163 CS
16A	3P+⊕	PEW 164 CS
16A	3P+N+⊕	PEW 165 CS
32A	2/3P+⊕	PEW 324 CS
32A	3P+N+⊕	PEW 325 CS
63A	All	PEW 63 CS
125A	All	PEW 125 CS

dimensions shown are not binding  
 and may be changed without notice

dimensions in mm

### (16 / 32A) PE ... SM



PE...SM	A	B	C	D	E	F	G	X	Y	Z ø	Pg ø
16A 2P+⊕	70	82	115	75	20	23	16	53	65	4.5	16
16A 3P+⊕	70	82	117	75	20	23	16	53	65	4.5	16
16A 3P+N+⊕	70	82	121	90	20	23	16	53	65	4.5	16
32A 2P+⊕	86	104	145	95	24	29	17	61	79	6.5	21
32A 3P+⊕	86	104	145	95	24	29	17	61	79	6.5	21
32A 3P+N+⊕	86	104	147	95	24	29	17	61	79	6.5	21

PEW...SM wall-mounting plugs, low voltage from over 50V up to 690V



16A  
IP67 degree of protection



32A  
IP67 degree of protection



63A  
IP67 degree of protection



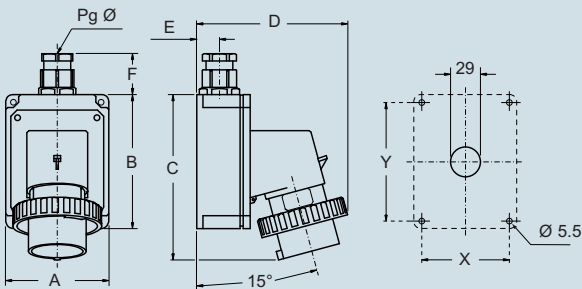
125A  
IP67 degree of protection



Part No.	Colour	Part No.	Colour	Part No.	Colour	Part No.	Colour
PEW 1643 SM ⊕	Yellow	PEW 3243 SM ⊕	Yellow	PEW 6343 SM ⊕	Yellow	PEW 12543 SM ⊕	Yellow
PEW 1663 SM ⊕	Blue	PEW 3263 SM ⊕	Blue	PEW 6363 SM ⊕	Blue	PEW 12563 SM ⊕	Blue
PEW 1693 SM ⊕	Red	PEW 3293 SM ⊕	Red	PEW 6393 SM ⊕	Red	PEW 12593 SM ⊕	Red
PEW 1673 SM ⊕	Black	PEW 3273 SM ⊕	Black	PEW 6373 SM ⊕	Black	PEW 12573 SM ⊕	Black
PEW 16123 SM ⊕	A.V.	PEW 32123 SM ⊕	A.V.	PEW 63123 SM ⊕	A.V.	PEW 125123 SM ⊕	A.V.
PEW 1623 SM ⊕	Green	PEW 3223 SM ⊕	Green	PEW 6333 SM	Green	PEW 12533 SM	Green
PEW 1633 SM ⊕	A.V.	PEW 3233 SM	A.V.	PEW 6383 SM	A.V.	PEW 12583 SM	A.V.
PEW 1683 SM	A.V.	PEW 3283 SM	A.V.				
PEW 1644 SM ⊕	Yellow	PEW 3244 SM ⊕	Yellow	PEW 6344 SM ⊕	Yellow	PEW 12544 SM ⊕	Yellow
PEW 1694 SM ⊕	Blue	PEW 3294 SM ⊕	Blue	PEW 6394 SM ⊕	Blue	PEW 12594 SM ⊕	Blue
PEW 1664 SM ⊕	Red	PEW 3264 SM ⊕	Red	PEW 6364 SM ⊕	Red	PEW 12564 SM ⊕	Red
PEW 16114 SM ⊕	Black	PEW 32114 SM ⊕	Black	PEW 63114 SM ⊕	Black	PEW 125114 SM ⊕	Black
PEW 1674 SM ⊕	Black	PEW 3274 SM ⊕	Black	PEW 6374 SM ⊕	Black	PEW 12574 SM ⊕	Black
PEW 1654 SM	Black	PEW 3254 SM	Black	PEW 6354 SM	Black	PEW 12554 SM	Black
PEW 1634 SM ⊕	Red	PEW 3234 SM ⊕	Red				
PEW 1634 SM ⊕	Red	PEW 3234 SM ⊕	Red				
PEW 16104 SM ⊕	Green	PEW 32104 SM ⊕	Green				
PEW 1624 SM ⊕	Green	PEW 3224 SM ⊕	Green				
PEW 1645 SM ⊕	Yellow	PEW 3245 SM ⊕	Yellow	PEW 6345 SM ⊕	Yellow	PEW 12545 SM ⊕	Yellow
PEW 1695 SM ⊕	Blue	PEW 3295 SM ⊕	Blue	PEW 6395 SM ⊕	Blue	PEW 12595 SM ⊕	Blue
PEW 1665 SM ⊕	Red	PEW 3265 SM ⊕	Red	PEW 6365 SM ⊕	Red	PEW 12565 SM ⊕	Red
PEW 1675 SM ⊕	Black	PEW 3275 SM ⊕	Black	PEW 6375 SM ⊕	Black	PEW 12575 SM ⊕	Black
PEW 1655 SM	Black	PEW 3255 SM	Black	PEW 6355 SM	Black	PEW 12555 SM	Black
PEW 16115 SM ⊕	Red	PEW 32115 SM ⊕	Red	PEW 63115 SM ⊕	Red	PEW 125115 SM ⊕	Red
PEW 1635 SM ⊕	Red	PEW 3235 SM ⊕	Red				
PEW 1635 SM ⊕	Red	PEW 3235 SM ⊕	Red				
PEW 1625 SM ⊕	Green	PEW 3225 SM ⊕	Green				

dimensions in mm

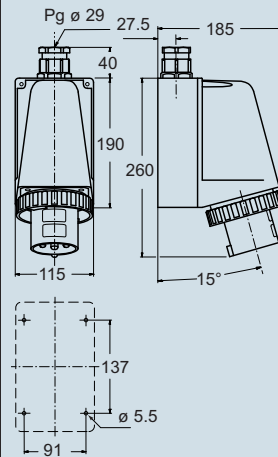
(16 / 32A) PEW ... SM



PEW...SM	A	B	C	D	E	F	X	Y	Pg ø
16A 2P+⊕	75	115	144	126	19	35	65	105	16
3P+⊕	75	115	144	134	19	35	65	105	16
3P+N+⊕	100	130	164	145	22	42	85	115	21
32A 2P+⊕	100	130	178	154	22	42	85	115	21
3P+⊕	100	130	178	154	22	42	85	115	21
3P+N+⊕	100	130	178	160	22	42	85	115	21

dimensions in mm

(63A) PEW ... SM



dimensions in mm

(125A) PEW ... SM

