

PE...SV coupler plugs, low voltage from over 50V up to 690V



- Compliant with EN 60309-1 and -2
- Enclosure, insert and locking ring in insulating, thermoplastic, self-extinguishing material
- PE...SV types 16A and 32A (IP44), entry with cable gland colour coded according to the operating voltage, RAL 7035 grey enclosure
- PEW...SV types 16A and 32A (IP66/IP67), entry with cable gland colour coded according to the operating voltage, RAL 7035 grey enclosure, locking ring with gasket colour coded according to operating voltage
- PEW...SV types 63A and 125A (IP67), entry with cable gland, RAL 7035 grey enclosure, locking ring with gasket colour coded according to operating voltage
- PEW...SV types 63A and 125A (IP67), cable anchoring collar incorporated in the insert
- SIP version with phase inverter (3P+N+⊕, h6) page 31
- Terminals with retained screws
- 63A, 125A: with pilot contact
- Nickel-plated contacts standard on 63A and 125A (on 16A and 32A only version PHW...SV page 14)
- IP44 and IP66/IP67 degrees of protection (EN 60529)
- ⊕ with Italian Quality Mark

16A
IP44 degree of protection



NEW

32A
IP44 degree of protection



NEW

Number of poles	Frequency Hz	Voltage V	Earthing contact position h	Part No.	Colour	Part No.	Colour
2P+⊕	50 and 60	100 - 130	4	PE 1643 SV ⊕	Yellow	PE 3243 SV ⊕	Yellow
	50 and 60	200 - 250	6	PE 1663 SV ⊕	Blue	PE 3263 SV ⊕	Blue
	50 and 60	380 - 415	9	PE 1693 SV ⊕	Red	PE 3293 SV ⊕	Red
	50 and 60	480 - 500	7	PE 1673 SV ⊕	Black	PE 3273 SV ⊕	Black
	50 and 60	ins. transformer	12	PE 16123 SV ⊕	A.V.	PE 32123 SV ⊕	A.V.
	> 300 - 500	> 50	2	PE 1623 SV ⊕	Green	PE 3223 SV ⊕	Green
	d.c.	> 50 - 250	3	PE 1633 SV ⊕	A.V.	PE 3233 SV	A.V.
	d.c.	> 250	8	PE 1683 SV	A.V.	PE 3283 SV	A.V.
3P+⊕	50 and 60	100 - 130	4	PE 1644 SV ⊕	Yellow	PE 3244 SV ⊕	Yellow
	50 and 60	200 - 250	9	PE 1694 SV ⊕	Blue	PE 3294 SV ⊕	Blue
	50 and 60	380 - 415	6	PE 1664 SV ⊕	Red	PE 3264 SV ⊕	Red
	60	440 - 460	11	PE 16114 SV ⊕	Black	PE 32114 SV ⊕	Black
	50 and 60	480 - 500	7	PE 1674 SV ⊕	Black	PE 3274 SV ⊕	Black
	50 and 60	600 - 690	5	PE 1654 SV	Black	PE 3254 SV	Black
	50	380	3	PE 1634 SV ⊕	Red	PE 3234 SV ⊕	Red
	60	440	3	PE 1634 SV ⊕	Red	PE 3234 SV ⊕	Red
	100 - 300	> 50	10	PE 16104 SV ⊕	Green	PE 32104 SV ⊕	Green
	> 300 - 500	> 50	2	PE 1624 SV ⊕	Green	PE 3224 SV ⊕	Green
3P+N+⊕	50 and 60	57/100 - 75/130	4	PE 1645 SV ⊕	Yellow	PE 3245 SV ⊕	Yellow
	50 and 60	120/208 - 144/250	9	PE 1695 SV ⊕	Blue	PE 3295 SV ⊕	Blue
	50 and 60	200/346 - 240/415	6	PE 1665 SV ⊕	Red	PE 3265 SV ⊕	Red
	50 and 60	277/480 - 288/500	7	PE 1675 SV ⊕	Black	PE 3275 SV ⊕	Black
	50 and 60	347/600 - 400/690	5	PE 1655 SV	Black	PE 3255 SV	Black
	60	250/440 - 265/460	11	PE 16115 SV ⊕	Red	PE 32115 SV ⊕	Red
	50	220/380	3	PE 1635 SV ⊕	Red	PE 3235 SV ⊕	Red
	60	250/440	3	PE 1635 SV ⊕	Red	PE 3235 SV ⊕	Red
	> 300 - 500	> 50	2	PE 1625 SV ⊕	Green	PE 3225 SV ⊕	Green

Legend

A.V. = Colour according to voltage

(*) Green may be used together with the colour of the operating range for frequencies above 60 Hz and up to a maximum of 500 Hz.

Accessories for IP66/IP67 plugs (optional)



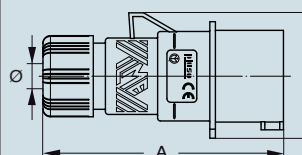
Loose protective cover

Size	Polarity	Part No.
16A	2P+⊕	PEW 163 CS
16A	3P+⊕	PEW 164 CS
16A	3P+N+⊕	PEW 165 CS
32A	2/3P+⊕	PEW 324 CS
32A	3P+N+⊕	PEW 325 CS
63A	All	PEW 63 CS
125A	All	PEW 125 CS

dimensions shown are not binding
and may be changed without notice

dimensions in mm

(16 / 32A) PE ... SV



PE...SV	A	B	Ø min	Ø max
16A 2P+⊕	129	59.5	7	16
3P+⊕	129	67	7	16
3P+N+⊕	129	75	8	24
32A 2P+⊕	150	81	8	24
3P+⊕	150	81	8	24
3P+N+⊕	150	90	8	24

PEW...SV coupler plugs, low voltage from over 50V up to 690V



16A
IP66/IP67 degrees of protection



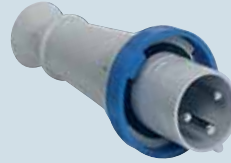
NEW

32A
IP66/IP67 degrees of protection

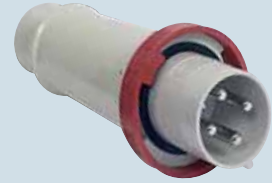


NEW

63A
IP67 degree of protection



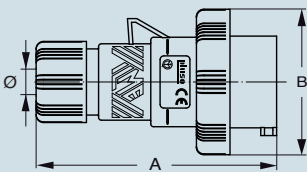
125A
IP67 degree of protection



Part No.	Colour	Part No.	Colour	Part No.	Colour	Part No.	Colour
PEW 1643 SV ⊕	Yellow	PEW 3243 SV ⊕	Yellow	PEW 6343 SV ⊕	Yellow	PEW 12543 SV ⊕	Yellow
PEW 1663 SV ⊕	Blue	PEW 3263 SV ⊕	Blue	PEW 6363 SV ⊕	Blue	PEW 12563 SV ⊕	Blue
PEW 1693 SV ⊕	Red	PEW 3293 SV ⊕	Red	PEW 6393 SV ⊕	Red	PEW 12593 SV ⊕	Red
PEW 1673 SV ⊕	Black	PEW 3273 SV ⊕	Black	PEW 6373 SV ⊕	Black	PEW 12573 SV ⊕	Black
PEW 16123 SV ⊕	A.V.	PEW 32123 SV ⊕	A.V.	PEW 63123 SV ⊕	A.V.	PEW 125123 SV ⊕	A.V.
PEW 1623 SV ⊕	(*)	PEW 3223 SV ⊕	(*)				
PEW 1633 SV ⊕	A.V.	PEW 3233 SV ⊕	A.V.	PEW 6333 SV	A.V.	PEW 12533 SV	A.V.
PEW 1683 SV	A.V.	PEW 3283 SV	A.V.	PEW 6383 SV	A.V.	PEW 12583 SV	A.V.
PEW 1644 SV ⊕	Yellow	PEW 3244 SV ⊕	Yellow	PEW 6344 SV ⊕	Yellow	PEW 12544 SV ⊕	Yellow
PEW 1694 SV ⊕	Blue	PEW 3294 SV ⊕	Blue	PEW 6394 SV ⊕	Blue	PEW 12594 SV ⊕	Blue
PEW 1664 SV ⊕	Red	PEW 3264 SV ⊕	Red	PEW 6364 SV ⊕	Red	PEW 12564 SV ⊕	Red
PEW 16114 SV ⊕	Black	PEW 32114 SV ⊕	Black	PEW 63114 SV ⊕	Black	PEW 125114 SV ⊕	Black
PEW 1674 SV ⊕	(*)	PEW 3274 SV ⊕	(*)	PEW 6374 SV ⊕	(*)	PEW 12574 SV ⊕	(*)
PEW 1654 SV	A.V.	PEW 3254 SV	A.V.	PEW 6354 SV	A.V.	PEW 12554 SV	A.V.
PEW 1634 SV ⊕	(*)	PEW 3234 SV ⊕	(*)				
PEW 1634 SV ⊕	(*)	PEW 3234 SV ⊕	(*)				
PEW 16104 SV ⊕	(*)	PEW 32104 SV ⊕	(*)				
PEW 1624 SV ⊕	(*)	PEW 3224 SV ⊕	(*)				
PEW 1645 SV ⊕	Yellow	PEW 3245 SV ⊕	Yellow	PEW 6345 SV ⊕	Yellow	PEW 12545 SV ⊕	Yellow
PEW 1695 SV ⊕	Blue	PEW 3295 SV ⊕	Blue	PEW 6395 SV ⊕	Blue	PEW 12595 SV ⊕	Blue
PEW 1665 SV ⊕	Red	PEW 3265 SV ⊕	Red	PEW 6365 SV ⊕	Red	PEW 12565 SV ⊕	Red
PEW 1675 SV ⊕	Black	PEW 3275 SV ⊕	Black	PEW 6375 SV ⊕	Black	PEW 12575 SV ⊕	Black
PEW 1655 SV	A.V.	PEW 3255 SV	A.V.	PEW 6355 SV	A.V.	PEW 12555 SV	A.V.
PEW 16115 SV ⊕	(*)	PEW 32115 SV ⊕	(*)	PEW 63115 SV ⊕	(*)	PEW 125115 SV ⊕	(*)
PEW 1635 SV ⊕	(*)	PEW 3235 SV ⊕	(*)				
PEW 1635 SV ⊕	(*)	PEW 3235 SV ⊕	(*)				
PEW 1625 SV ⊕	(*)	PEW 3225 SV ⊕	(*)				

dimensions in mm

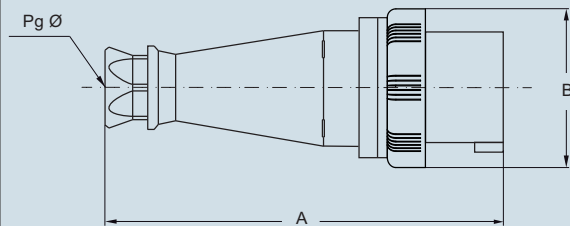
(16 / 32A) PEW ... SV



PEW...SV	A	B	ø min	ø max
16A 2P+⊕	129	70	7	16
3P+⊕	129	77	7	16
3P+N+⊕	129	86	8	24
32A 2P+⊕	150	92	8	24
3P+⊕	150	92	8	24
3P+N+⊕	150	100	8	24

dimensions in mm

(63 / 125A) PEW ... SV



PEW...SV	A	B	Pg ø
63A 2P+⊕	264.5	112	36
3P+⊕	264.5	112	36
3P+N+⊕	264.5	112	36
125A 2P+⊕	310	130	2"gas
3P+⊕	310	130	2"gas
3P+N+⊕	310	130	2"gas