

# SIP... plugs with phase inverter, low voltage



- Compliant with EN 60309-1 and -2
- Enclosure and insert in insulating, thermoplastic and self-extinguishing material
- SIP... types (IP44), red enclosure (colour coded according to the operating voltage), entry with threaded grommet
- SIP...SV types (IP44), entry with cable gland colour coded according to the operating voltage, RAL 7035 grey colour enclosure
- SIPW... types (IP67), RAL 7035 grey enclosure, red bayonet ring (colour coded according to the operating voltage), entry with cable gland
- SIPW...SV types (IP66/IP67), entry with cable gland colour coded according to the operating voltage, RAL 7035 grey enclosure, locking ring and gasket, colour coded according to the operating voltage, earth contact position different from h 6 on request
- Built-in phase inverter device, operated by means of a screwdriver
- Terminals with retained screws
- SIP/SIPW...SM/SI types: nickel-plated contacts on request
- SIPW...SV HEAVY DUTY types: nickel-plated contacts on request
- IP44 and IP66/IP67 degrees of protection (EN 60529)

## 16A and 32A wall-mounting plugs IP44 degree of protection



## 16A and 32A wall-mounting plugs IP67 degree of protection



Number of poles	Frequency Hz	Voltage V	Rated current	Earthing cont. position h	Part No.	Colour	Part No.	Colour
3P+N+⊕	50 and 60	200/346 - 240/415	16A	6	SIP 1665 SM		SIPW 1665 SM	
	50 and 60	200/346 - 240/415	32A	6	SIP 3265 SM		SIPW 3265 SM	

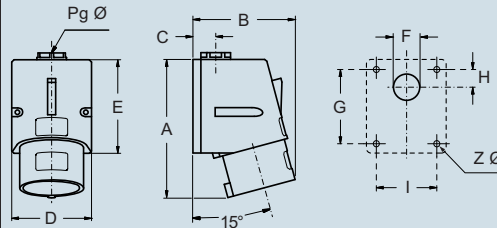
### Version

SIP plugs incorporate a mechanical device that exchanges the position of the pins of phases L2 and L3 (phase inverter); this enables the phase cycles to be adapted to the required direction of rotation of three-phase motors. The device can be regulated on the contact side using a screwdriver without having to disassemble the plug.



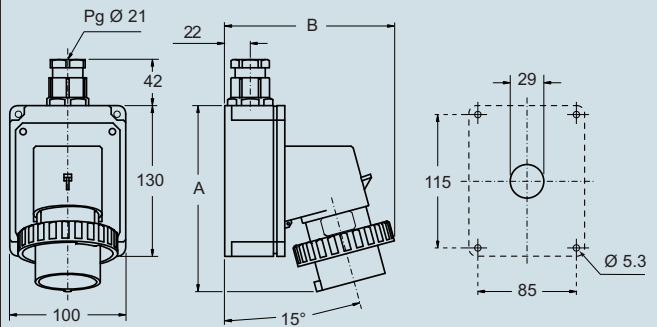
dimensions in mm

### SIP ... SM



Type	A	B	C	D	E	F	G	H	I	Z	Pg	ø
16A	121	90	20	70	82	23	65	16	53	4.3	16	
32A	147	95	24	86	104	29	79	17	61	6.3	21	

### SIPW ... SM



Type	A	B
16A	164	145
32A	178	160

Accessories for IP66/IP67 plugs (optional)



Loose protective cover

Size	Part No.
16A	PEW 165 CS
32A	PEW 325 CS

dimensions shown are not binding and may be changed without notice

# SIP... plugs with phase inverter, low voltage



16A and 32A flush-mounting plugs  
IP44 degree of protection



16A and 32A flush-mounting plugs  
IP67 degree of protection

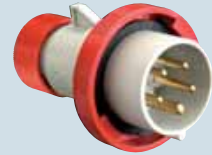


16A and 32A plugs  
IP44 degree of protection



**NEW**

16A and 32A plugs  
IP67 degree of protection

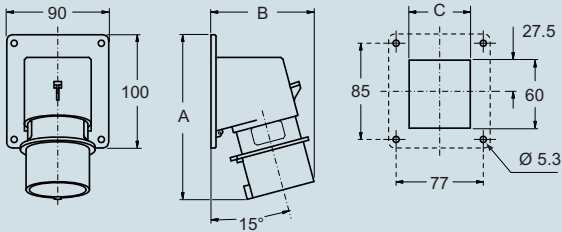


**NEW**

Part No.	Colour	Part No.	Colour	Part No.	Colour	Part No.	Colour
SIP 1665 SI		SIPW 1665 SI		SIP 1665 SV		SIPW 1665 SV	
SIP 3265 SI		SIPW 3265 SI		SIP 3265 SV		SIPW 3265 SV	

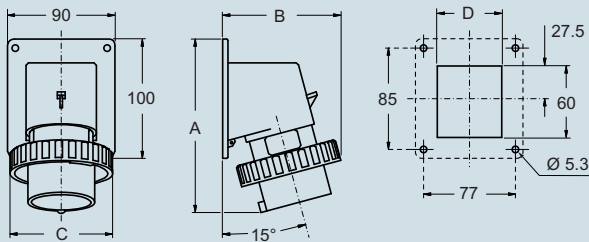
dimensions in mm

SIP ... SI



Type	A	B	C
16A	146	93	54
32A	160	106	62

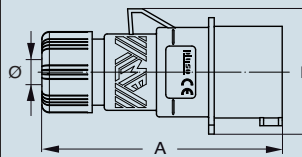
SIPW ... SI



Type	A	B	C	D
16A	146	99	86	54
32A	160	113	100	62

dimensions in mm

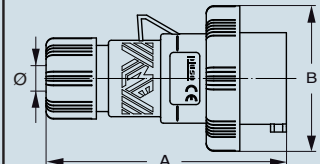
SIP ... SV



Type	A	B	ø min	ø max
16A	129	75	8	24
32A	150	90	8	24

dimensions in mm

SIPW ... SV



Type	A	B	ø min	ø max
16A	129	86	8	24
32A	150	100	8	24